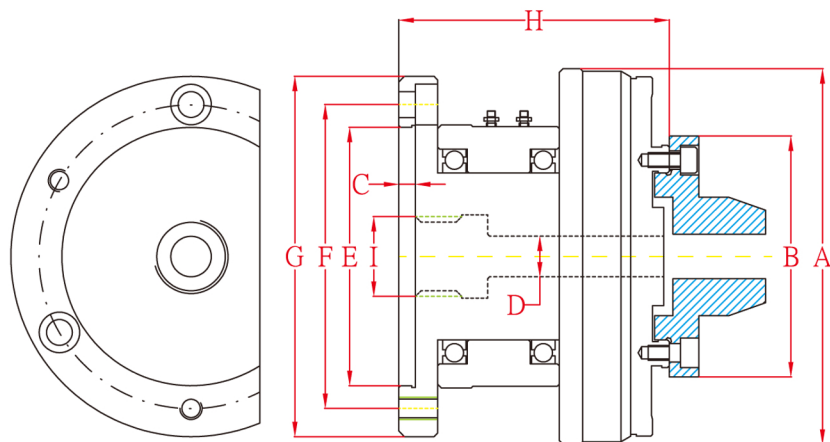


JAP100 產品尺寸性能規格



型號	JAP104	JAP105	JAP106
A	101 (3.98")	137 (5.37")	166 (6.54")
B	60 (2.36")	70 (2.76")	100 (3.94")
C	4.0 (0.16")	3.5 (0.14")	5.5 (0.22")
D	10 (0.39")	12 (0.47")	42 (1.65")
E	70 (2.76")	100 (3.94")	130 (5.12")
F (P. C. D.)	82 (3.23")	115 (4.53")	147 (5.79")
G	97 (3.82")	135 (5.31")	167 (6.57")
H	73 (2.87")	90 (3.54")	107 (4.21")
I	M21xP1.5	M25xP1.5	M60xP1.5
安裝螺絲孔	4H-M6 (前鎖)	3H-M8 (前鎖)+ 3H-M8 (後鎖)	3H-M10 (前鎖)+ 3H-M10 (後鎖)
最高轉速	4000	3400	2400
工作氣壓	0.5-7kg/cm ² (7-100psi)	0.5-7kg/cm ² (7-100psi)	0.5-7kg/cm ² (7-100psi)
夾爪直徑行程(開合量)	0.20mm (0.008")	0.20mm (0.008")	0.20mm (0.008")
夾頭中空通孔	10mm (0.39")	14mm (0.57")	42mm (1.65")
產品淨重	2.8kgs (6.2lbs)	6.0kgs (13.2lbs)	9.5kgs (20.9lbs)

JAP100專用夾爪尺寸表

型號	A	B	C	D	F	G	H	爪分割	適用夾頭
JD-60	65mm (2.56")	52mm (2.05")	45mm (1.77")	32mm (1.26")	12mm (0.47")	4.0mm (0.16")	4.5mm (0.18")	6	JAP104
JD-70	75mm (2.95")	60mm (2.36")	50mm (1.97")	37mm (1.46")	14mm (0.55")	5.0mm (0.20")	5.0mm (0.20")	6	JAP105
JD-100	105mm (4.13")	90mm (3.54")	80.2mm (3.16")	65mm (2.56")	14mm (0.55")	5.5mm (0.22")	5.0mm (0.20")	8	JAP106

