

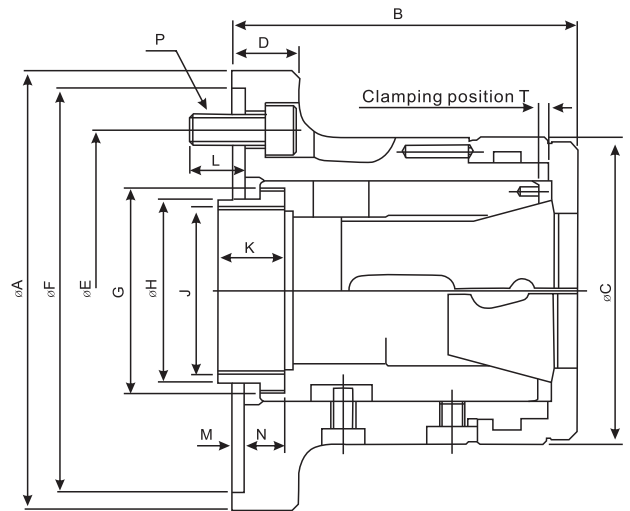
> CR SERIES

筒夾夾頭



COLLET CHUCKS FOR CYLINDRICAL CENTER MOUNT

- ◎ 1.筒夾夾頭可快速拆卸止檔蓄，適用於NC/CNC車床加工素材。
- ◎ 2.棒材能經由夾頭通孔進行送料作業。
- ◎ 3.可依工作形狀及尺寸來選擇適合的筒夾。
- ◎ Collet chucks with bayonet catch are mainly used for chucking bar work on NC / CNC lathes.
- ◎ The bar can be fed in through the chuck.
- ◎ Profiles can also be chucked with the appropriate collets.



型式 Model	適合主軸 Matched spindle	容許棒材直徑 Bar Capacity (mm)	套筒行程 Sleeve Stroke (mm)	重量 (kg) Weight	最大容許推力 Max DB pull KN (kgf)	最大夾持力 Max clamping force (kgf)	最高回轉速 Max R.P.M
CR42-140	140	42	7	6.2	25(2549)	55(5608)	6,000
CR60-170	170	60	7	11.5	30(3059)	65(6628)	5,000
CR60-220	220	60	7	15.5	30(3059)	65(6628)	5,000

型式 Model	A(h6)	B	C	D	E	F(H6)	G	H	Jmax	K	L	M	N	P	T
CR42-140	155	114	100	23	133.35	140	M66 × P1.5	66	M55 × P2.0	25	18	6	11.9	3-M10	3.1
CR60-170	185	139	130	30	133.35	170	M90 × P1.5	80	M74 × P2.0	30	18	6	17.9	6-M12	3.1
CR60-220	235	141	130	32	171.45	220	M90 × P1.5	80	M74 × P2.0	30	20	6	19.09	6-M16	3.1

使用筒夾須符合
DIN 6343規範

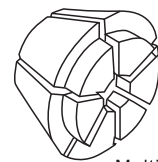
筒夾筒崎固

夾持範圍 / Clamping range

CHUCK	MULTIBORE				SPRING COLLET				
	NO.	CAT.NO.	○	◇	□	CAT.NO.	○	◇	□
CR42	M-673	42	36	30	173E/4728	42	36	30	
CR60	M-677	60	52	42	185E/4291	60	52	42	



Spring Collet



Multi-Bore Collet

* 保留技術更改的權利，恕不另行通知 Subject to technology changes without prior information
* 非標需求可訂做 Non-standard requirements can be made