

油氣壓快速回轉夾頭

AIR/HYDRAULIC POWER ROTARY POWER CHUCK

- ◎ 快速夾頭內藏油壓/氣壓迴轉缸，免額外安裝迴轉缸
- ◎ 安裝簡易，快速建置工作夾持系統
- ◎ 氣壓型夾頭缸體加大，提升夾持力
- ◎ 筒夾/副爪快速更換設計，高工作彈性
- ◎ 夾頭具中心通孔設計，配合自動送料系統工作
- ◎ 夾持/放料週期短，生產速度快
- ◎ 可不停機上下料，產能高
- ◎ 適合傳統車床改裝自動化或半自動化
- ◎ 適合組裝各式專用加工機械
- ◎ 切削液不可直接沖向夾頭
- ◎ JA7-44/JH7-44採用增力2.0倍設計，提供增大夾持力
- ◎ JA7-44/JH7-44可以選購內張套件進行內張夾持作業
(內張套件參考P.13)

Self-Contained Power Chuck. No need for an extra rotary actuator. Aluminum alloy chuck body, light-weighted, good heat dispensation. Allows non-stop operation when loading/unloading parts. Widely applied to convert manual lathes into powered ones. Refer to the following figure.



(筒夾式夾頭)



(副爪式夾頭)

產品簡介

快速精密迴轉夾頭系列產品即是高性能、高品質、安裝方便、使用容易的代名詞。

快速精密迴轉夾頭系列內藏油氣壓迴轉缸，使用者可以在極短的時間內完成工件夾持系統的設置，快速地展開各式加工作業。此外，快速精密迴轉夾頭的快速更換筒夾/副爪設計，能幫助客戶更彈性的面對各式少量多樣的加工作業。因此無論是自動化加工、半自動化加工、傳統機床改裝自動化、專用機組裝等各式應用，快速精密迴轉夾頭皆是客戶的指名首選。

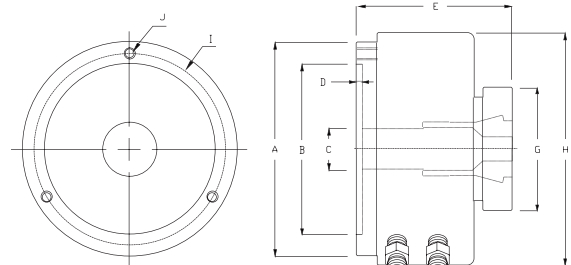
快速精密迴轉夾頭是業界公認的領導品牌。我們堅持品質至上，選用進口軸承組與零件組，全線產品自金屬材料、加工、組裝、產品測試至產品包裝等作業，一律由本廠與長期合作的協力夥伴一貫完成，提供客戶高等級的品質承諾。

It used to be complex for users to convert a manual lathe into one with power workholding device since setting up a hydraulic system is quite troublesome.

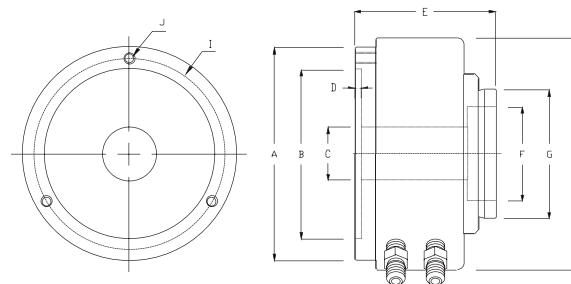
NTH Rotary Power Chuck is specially designed to help users to set up a power chuck in a low cost and easy way. With its built-in rotary actuator, the Rotary Power Chuck can be installed and start working in less than 20 minutes.

Rotary Power Chuck comes with both air chuck and hydraulic chuck models that range from small sizes to large ones, giving users more options to choose from. Rotary Power Chuck now is widely applied to convert manual lathes to semi-auto ones with power workholding system, or is applied to build special purpose machines.

筒夾式快速迴轉夾頭



副爪式快速迴轉夾頭



筒夾式快速迴轉夾頭 *內張外夾兩用-詳見次頁

Collet Style Power Chuck

型號/Model	JA7-44	JH7-44
A	192 (7.56")	192 (7.56")
B	155 (6.10")	155 (6.10")
C	44 (1.73")	44 (1.73")
D	5 (0.20")	5 (0.20")
E	135 (5.31")	135 (5.31")
F	-	-
G	107 (4.21")	107 (4.21")
H	212 (8.35")	212 (8.35")
I (P.C.D)	172 (6.77")	172 (6.77")
J	3H-M10 (後鎖 Rear)	3H-M10 (後鎖 Rear)
工作筒夾/副爪 Working collet/Jaw	C-44筒夾 Collet C-44I內張套件 Expanding parts	C-44筒夾 Collet C-44I內張套件 Expanding parts
氣壓/油壓驅動 Power source	氣壓 Air	油壓 Hydraulic
工作壓力 Working pressure	2-20kg/cm ² (28-286psi)	2-20kg/cm ² (28-286psi)
最高轉速 Max RPM	1600	1600
最大夾徑 通孔/不通孔 Max Clamping dia. Thru/no thru	44mm (1.73")	44mm (1.73")
缸體活塞面積 Piston Area	117cm ² (18in ²)	117cm ² (18in ²)
夾持力 Clamping force	5400kgf@16kg/cm ² (12020lbf@229psi)	10800kgf@16kg/cm ² (24040lbf@229psi)
產品淨重 N. W	17kgs (37.4lbs)	17kgs (37.4lbs)

氣壓式副爪快速回轉夾頭

Jaw Style Power Chuck-Air

型號/Model	JA5-25	JA7-40	JA7-70
A	135 (5.31")	192 (7.56")	192 (7.56")
B	100 (3.94")	155 (6.10")	155 (6.10")
C	25 (0.98")	45 (1.77")	68 (2.68")
D	4.0 (0.16")	4.5 (0.18")	5.0 (0.20")
E	102 (4.02")	126 (4.96")	141 (5.55")
F	45 (1.77")	65 (2.56")	105 (4.13")
G	68 (2.68")	94 (3.70")	136 (5.35")
H	170 (6.69")	212 (8.35")	265 (10.43")
I (P.C.D)	115 (4.53")	172 (6.77")	172 (6.77")
J	3H-M8 (後鎖 Rear)	3H-M10 (後鎖 Rear)	3H-M10 (後鎖 Rear)
工作筒夾/副爪 Working collet/Jaw	C-25型副爪 C-25 Type Jaw	C-40型副爪 C-40 Type Jaw	C-70型副爪 C-70 Type Jaw
氣壓/油壓驅動 Power source	氣壓 Air	氣壓 Air	氣壓 Air
工作壓力 Working pressure	2-9kg/cm ² (28-130psi)	2-9kg/cm ² (28-130psi)	2-9kg/cm ² (28-130psi)
最高轉速 Max RPM	1800	1600	1400
最大夾徑 通孔/不通孔 Max Clamping dia. Thru/no thru	25mm/32mm (0.98"/1.26")	45mm/50mm (1.77"/1.97")	68mm/90mm (2.68"/3.54")
缸體活塞面積 Piston Area	115cm ² (17.8in ²)	182cm ² (28.2in ²)	329cm ² (50.8in ²)
夾持力 Clamping force	2254kgf@7kg/cm ² (4958lbf@100psi)	3567kgf@7kg/cm ² (7847lbf@100psi)	6429kgf@7kg/cm ² (14143lbf@100psi)
產品淨重 N. W	7.5kgs (16.5lbs)	15.0kgs (33.0lbs)	22.5kgs (49.5lbs)

油壓式副爪快速回轉夾頭 Jaw Style Power Chuck-Hydraulic

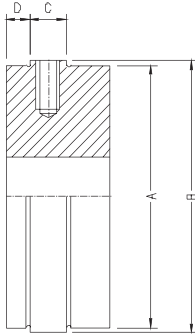
型號 /Model	JH5-25	JH7-40	JH7-70	JH9-90	JH9-120
A	135 (5.31")	192 (7.56")	192 (7.56")	230 (9.06")	229 (9.02")
B	100 (3.94")	155 (6.10")	155 (6.10")	190 (7.48")	190 (7.48")
C	25 (0.98")	45 (1.77")	68 (2.68")	88 (3.52")	118 (4.65")
D	4.0 (0.16")	4.5 (0.18")	5.0 (0.20")	5.5 (0.22")	5.5 (0.22")
E	102 (4.02")	126 (4.96")	141 (5.55")	150 (5.91")	157 (6.18")
F	45 (1.77")	65 (2.56")	105 (4.13")	105 (4.13")	140 (5.51")
G	68 (2.68")	94 (3.70")	136 (5.35")	136 (5.35")	168 (6.61")
H	138 (5.43")	190 (7.48")	211 (8.31")	232 (9.13")	275 (10.83")
I (P.C.D)	115 (4.53")	172 (6.77")	172 (6.77")	210 (8.27")	210 (8.27")
J	3H-M8 (後鎖) Rear	3H-M10 (後鎖) Rear	3H-M10 (後鎖) Rear	3H-M12 (後鎖) Rear	3H-M12 (後鎖) Rear
工作副爪 Working Jaw	C-25型副爪 C-25 Type Jaw	C-40型副爪 C-40 Type Jaw	C-70型副爪 C-70 Type Jaw	C-90型副爪 C-90 Type Jaw	C-120型副爪 C-120 Type Jaw
氣壓/油壓驅動 Power source	油壓 Hydraulic	油壓 Hydraulic	油壓 Hydraulic	油壓 Hydraulic	油壓 Hydraulic
工作壓力 Air Pressure	10-25kg/cm ² (143-357psi)	10-20kg/cm ² (143-286psi)	10-20kg/cm ² (143-286psi)	10-15kg/cm ² (143-214psi)	10-15kg/cm ² (143-214psi)
最高轉速 Max RPM	1800	1600	1400	1100	900
最大夾徑 通孔/不通孔 Max Clamping dia. Thru/no thru	25mm/32mm (0.98"/1.26")	45mm/50mm (1.77"/1.97")	68mm/90mm (2.68"/3.54")	88mm/88mm (3.52"/3.52")	118mm/118mm (4.65"/4.65")
缸體活塞面積 Piston Area	56cm ² (8.68in ²)	85cm ² (13.1in ²)	117cm ² (18.1in ²)	133cm ² (20.7in ²)	183cm ² (28.4in ²)
夾持力 Clamping force	2508kgf@16kg/cm ² (5519lbf@228psi)	4032kgf@16kg/cm ² (8870lbf@228psi)	5197kgf@16kg/cm ² (11433lbf@228psi)	5913kgf@16kg/cm ² (13009lbf@228psi)	6148kgf@12kg/cm ² (13528lbf@171psi)
產品淨重 N. W	6.0kgs (13.2lbs)	13.0kgs (28.6lbs)	18.0kgs (39.6lbs)	24.0kgs (52.8lbs)	30.0kgs (66.0lbs)



快速回轉夾頭/固定型夾頭專用副爪

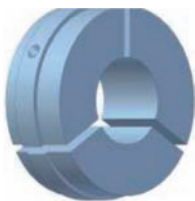
SPECIAL JAWS FOR HIGH SPEED ROTARY COLLET CHUCK/STATIONARY COLLET CHUCK

專用副爪尺寸與適用產品



型號 Model	A	B	C	D	安裝螺絲	適用夾頭型號 Application collet chuck
C-25	45mm (1.77")	47.5mm (1.87")	7mm (0.28")	5.0mm (0.20")	M5x10	JA5-25 / JH5-25
C-40	65mm (2.56")	67.5mm (2.66")	9mm (0.35")	6.0mm (0.24")	M6x12	JA7-40 / JH7-40 JAS-40 / JHS-40 / CAF-40
C-70	105mm (4.13")	107.5mm (4.23")	9mm (0.35")	6.0mm (0.24")	M6x12	JA7-70 / JH7-70 / JH9-90 JHS-70 / CAF-70
C-120	140mm (5.51")	143.5mm (5.65")	9mm (0.35")	6.0mm (0.24")	M6x14	JH9-120

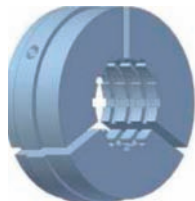
根據工件外型與夾持需求所設計的專用夾爪



標準通孔型



兩層型(短工件適用)



強力十字溝(或圓溝)



六角或異型件



特殊加高型

內張與外夾兩用的44型快速回轉夾頭

44 TYPE EXPANDING AND CLAMPING DOUBLE FUNCTION ROTARY COLLET CHUCK

(JA7-44/JH7-44)



將筒夾式迴轉夾頭快速的轉換為內張夾頭

筒夾式快速迴轉夾頭(JA7-44 / JH7-44)除了可以安裝C-44型筒夾應用於外夾作業外，亦可以透過安裝一組內張套件，包含一只推桿座與彈性內徑夾，可以在非常短的時間內快速將筒夾式快速迴轉夾頭轉換為快速迴轉內張夾頭。快速迴轉夾頭的彈性內徑夾(C-44I)是根據客戶的加工件所設計訂製的，我們的製作速度快，可以在訂單後一週內交貨，幫助您快速地展開您的內張夾持加工作業。