

替換式系列
Interchangeable live centers series

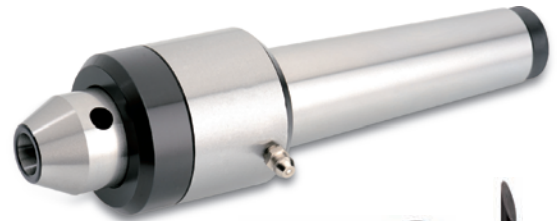
輕負荷
Light duty

> SC-48 SERIES

尖部替換回轉頂針

INTERCHANGEABLE LIGHT DUTY LIVE CENTER

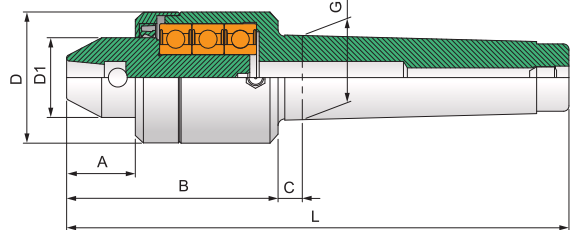
- ◎ 適用: CNC車床、高速車床及一般車床。
Application CNC lathe and high speed lathe or center lathe.
- ◎ 用途: 適用一般小徑高速車削加工。
Working Usage Applicable for ordinary small diameter high speed turning process.
- ◎ 結構: 採用斜角滾珠軸承, 深溝滾珠軸承特殊設計製成。
Structure Combination of angular contact ball bearing and deep groove ball bearing.
- ◎ 配件: 48型小子、61型沖子
Accessories 48 type Tips and 61 type pin punch.
- ◎ 精準度: 0.005以內
TIR Less than 0.005mm



48型小子
48 type Tips



61型沖子
61 type pin punch



規格 / Specification 單位/UNIT: mm

型式/外表尺寸 Model/Spec	A	B	C	D	D1	G	L	軸承最高轉數 Max. RPM	軸承徑向力 (載重) Max. radial load
SC-48-M-2	25	78	6	52	28.5	17.780(MT2)	147	2,000 rpm	300 kg
SC-48-M-3	25	79	8	52	28.5	23.825(MT3)	166	2,000 rpm	400 kg
SC-48-M-4	25	78	9	52	28.5	31.267(MT4)	186	2,000 rpm	500 kg

> SC-91 SERIES

尖部替換回轉頂針

INTERCHANGEABLE LIGHT DUTY LIVE CENTER

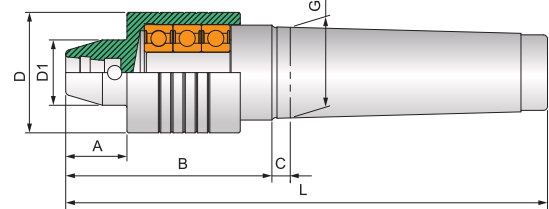
- ◎ 適用: 一般車床使用(沒有防水功能, 不適用CNC車床)。
Application Ordinary lathe (without waterproof function, can't be used to CNC lathe)
- ◎ 用途: 適用一般軸心車削加工。
Working Usage Applicable for ordinary turning process.
- ◎ 結構: 採用合金鋼材, 經熱處理硬度達57°~60°, 內外徑研磨製成。
Structure Made of alloy steel and hardened to HRC 57-60, ground on ID and OD.
- ◎ 選配: 61型中子、61型沖子
Accessories 61 type Tips and 61 type pin punch.
- ◎ 精準度: 0.005以內
TIR Less than 0.005mm



61型中子
61 type Tips



61型沖子
61 type pin punch



規格 / Specification 單位/UNIT: mm

型式/外表尺寸 Model/Spec	A	B	C	D	D1	G	L	軸承最高轉數 Max. RPM	軸承徑向力 (載重) Max. radial load
SC-91-L-2	30	95	6	48	32	17.780(MT2)	164	3,500 rpm	160 kg
SC-91-L-3	30	95	8	48	32	23.825(MT3)	182	3,000 rpm	250 kg
SC-91-L-4	30	95	9	48	32	31.267(MT4)	203	2,600 rpm	400 kg
SC-91-L-5	30	101	9	59	32	44.399(MT5)	236	2,200 rpm	800 kg

備注: ■ 本頂針指定使用SKF-LGMT2專用潤滑油, 請勿使用其他不同成分之潤滑油。
 ■ 產品型號中有“A”的表示頂針有附螺帽 ■ 配件中的頂針子, 型號有“A”的為加長型頂針子。
 ■ 徑向力數據參考: 加工件重量+車削力量 ■ 軸向力數據參考: 尾座油壓壓力數據 ■ 注油式: 可添加專用SKF潤滑油, 具防水性。
 ■ For the lubricating oil, SKF-LGMT2 is designated, others aren't allowed ■ if "A" is behind the center interchangeable tip name, it denotes the tip is extended length.
 ■ About axial force data, please refer to the hydraulic pressure data of the tailstock. ■ About radial force data, please refer to workpiece weight and machining force. ■ For live centers, SKF lubricating oil is designated, it is waterproof.