

替換式系列
Interchangeable live centers series

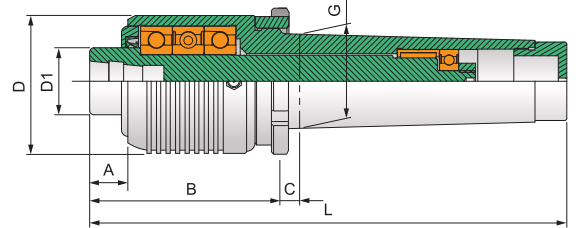
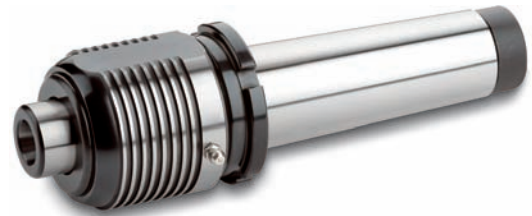
重負荷
Heavy duty

> NCH-65 SERIES

尖部替換式精密級高速回轉頂針

INTERCHANGEABLE HEAVY DUTY PRECISION HIGH SPEED LIVE CENTER

- ◎ 適用: CNC車床及高級車床。
Application CNC lathe and high speed lathe.
- ◎ 用途: 適用高速高精密切心車削加工。
Working Usage Applicable for high speed and high precision turning process.
- ◎ 結構: 斜角滾珠精密級高速軸承, 針狀軸承特殊設計製成。
Structure Combination of angular contact ball precise high speed bearing and thrust bearing and needle bearing.
- ◎ 配件: Y型扳手、65型大子、65型沖子
Accessories Y spanner and 65 type Tips and 65 type punch.
- ◎ 精準度: 0.005以內
TIR Less than 0.005mm



規格 / Specification 單位/UNIT: mm

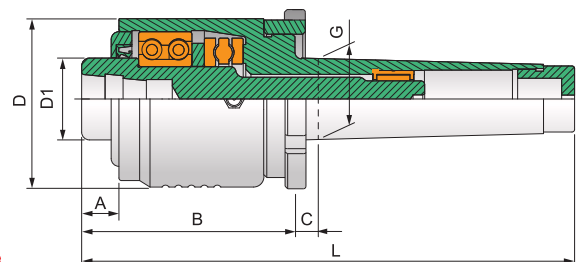
型式/外表尺寸 Model/Spec	A	B	C	D	D1	G	L	軸承最高轉數 Max. RPM	軸承徑向力 (載重) Max. radial load	軸承軸向力 (推力) Max. axial thrust force
NCH-65-4A	18	90	9	62	31.2	31.267(MT4)	198	12,000 rpm	2,730 kg	1,750 kg
NCH-65-5A	18	90	9	62	31.2	44.399 MT5	225	12,000 rpm	2,730 kg	1,750 kg

> SC-65 SERIES

尖部替換式重負荷回轉頂針

INTERCHANGEABLE HEAVY DUTY LIVE CENTER

- ◎ 適用: CNC車床、高速車床及其他機床。
Application CNC lathe and high speed lathe or other lathe.
- ◎ 用途: 適用長度400mm以內, 一般強力車削加工。
Working Usage Applicable for the length less than 400mm ordinary strong turning process.
- ◎ 結構: 採用雙列滾珠精密軸承、止推軸承、滾針軸承特殊設計製成。
Structure Combination of double row ball precise bearing and thrust bearing and needle bearing.
- ◎ 選配: SC-65-H-4/5:65型大子、65型沖子
Accessories SC-65-H-4A/5A:Y型扳手、65型大子、65型沖子
1, For SC-65-H-4/5, 65 type Tips and 65 type punch.
2, For SC-61-H-4A/5A, Y spanner and 65 type Tips and 65 type punch.
- ◎ 精準度: 0.005以內
TIR Less than 0.005mm



規格 / Specification 單位/UNIT: mm

S light type for slender workpiece
另有同規格輕負荷 (S型, 無螺帽)
可改善細長工件加工易變形問題

型式/外表尺寸 Model/Spec	A	B	C	D	D1	G	L	軸承最高轉數 Max. RPM	軸承徑向力 (載重) Max. radial load	軸承軸向力 (推力) Max. axial thrust force
SC-65H-4	14	70	9	62	31.2	31.267(MT4)	178	4,000 rpm	1,430 kg	2,700 kg
SC-65H-5	14	70	9	62	31.2	44.399(MT5)	205	4,000 rpm	1,430 kg	2,700 kg
SC-65H-4A	14	82	9	62	31.2	31.267(MT4)	190	4,000 rpm	1,430 kg	2,700 kg
SC-65H-5A	14	82	9	62	31.2	44.399(MT5)	217	4,000 rpm	1,430 kg	2,700 kg