



NTH[®]

NTH卡盤、油缸系列產品 NTH CHUCKS/ROTARY CYLINDERS PRODUCTION

新品非標系列 NON STANDARD SERIES



 **奧瑪泰機電設備有限公司**
OMATEI M&E EQUIPMENT CO., LTD.

NTH[®] NTH卡盤、油缸系列產品
NTH CHUCKS/ROTARY CYLINDERS PRODUCTION

地址/Add : 江苏省昆山市周市镇黄浦江北路511号智能装备中心20栋
BUILDING 20, NO.511 HUANGPUJIANG NORTH ROAD,KUNSHAN CHINA. 215300
电话/Tel : +86-512-55127340 57667732 36868655 50327993 36868656
传真/Fax : +86-512-57661676 E-mail: omatei@omatei.com ; omatei@aliyun.com
网址/Web : www.omatei.com www.jawschuck.com

内容参数如有不尽详细及误差之处, 请以实物为准
In case of any difference or error of the content and parameters, please in kind prevail.
保留规格修改的权利, 恕不另行通知
Subject to technology changes without prior information
奥玛泰版权所有, 翻版必究!

2023.05

公司簡介

COMPANY PROFILE

昆山奧瑪泰機電設備有限公司成立於2007年，十幾年來專注於智能製造業，專業為數控機床提供精密夾具，目前生產銷售OMATEI、NTH系列產品，主要服務於智能裝備製造、精密加工、汽車電子、醫療器械、航空航天等領域，不但在國內占有一定市場，而且銷往歐美及東南亞等國家，並受到國內外廣大用戶的認可與好評！

在智能製造精密夾具方面，我司生產銷售：高速精密液壓卡盤及回轉油缸系列、高速精密手動卡盤系列、高速精密回轉及各種專用車床頂針（車床頂尖）系列、精密機械手動、油壓及氣動虎鉗系列，專用卡盤系列，如前置式筒夾卡盤、分度卡盤、傘齒輪卡盤、前端驅動卡盤、自動分度卡盤、外徑卡盤；以及自動化裝夾氣密檢測裝置等。

在夾具配件領域，生產有各種規格型號的公制、英制軟爪（生爪）、硬爪、手動卡盤的一體爪與分離爪及強力軟爪（C型A型頂爪）、T型塊、修爪器（成型圈）、連接盤（過渡法蘭）筒夾等。根據客戶加工材料的不同，我司生產的軟爪有鋁爪、塑膠爪、銅爪、不銹鋼爪等多種材質。在加工薄壁管材容易變形及鬆脫的問題上，我司已研發輕質合金夾具（重量祇有同等規格的1/3），其不但能防止在加持過程中薄壁管材變形的問題，而且能有效的改善夾具在高速運轉時所產生的離心力。

除標準產品外，可根據客戶需求，定向專業設計生產：非標卡盤、回轉油缸、軟爪（生爪）、頂針（頂尖）、自動化夾持檢測單元與機床智能化升級改造，提供OEM與ODM、JDM服務。

About Omatei company

Kunshan Omatei Mechanical and Electrical Equipment Co., LTD has been specialized in precision manufacturing for over ten years. We produce various kinds of soft jaws which can be matched with chucks made in Europe and America or China Etc. as well high precision hydraulic power chucks and manual chucks, and other special non standard fixture products on CNC machine tools.

Our productions

For chuck jaws, We have standard serration pitch of soft jaws, Non-standard specification can be made according to customers' different demand, we can also produce aluminum, nylon, brass and stainless steel material jaws, Our company has developed supper light alloy soft jaws which weight is only one third of the regular types, this product can not only prevent from deformation issue of thin wall tube workpiece during the clamping process, but effectively improve centrifugal force of the chuck as well.

For hydraulic power chucks, we have been making the standard specification power chuck and rotary cylinders, our power chuck body accuracy and the rigidity and wearing resistance quality is very good. The cost performance is very competitive. For special using chucks, we have collet chucks, index chucks, scroll chucks, chucks with built-in cylinders, pin arbor chucks,

We are specialized to make various non-standard Chucks/Rotary cylinders/Soft Jaws/Bar stopper/Tools machine modification and OEM/ODE/JDM service.

We also produce and sell live centers, vises, rotary table, self centering steady rest, non-standard chucks, T-nut, hard jaws, jaw boring rings, adapter plates, BT pull studs, ER collet, milling chucks, and many accessories of tools machine.

公司宗旨：為您提供專業自動化夾具解決方案，讓您完全滿意是我們的責任和動力。

COMPANY OBJECTIVE: TO PROVIDE YOU THE PROFESSIONAL SOLUTION OF CHUCK SERIES PRODUCTS, YOUR SATISFACTION IS OUR RESPONSIBILITY AND MOTIVATION.

目錄

INDEX

1T 單爪中實型超長爪行程動力夾頭	01
single jaw power chuck	
1B 單爪中空超長行程動力夾頭	02
single jaw through hole power chuck	
2AT 兩爪強力后拉固鎖式動力夾頭	03
2 jaw pull lock power chuck	
3AT 三爪強力后拉固鎖式動力夾頭	04
3 jaw pull lock power chuck	
2F 二爪中實型指形動力夾頭	05
2 jaw finger power chuck	
3F 三爪中實型指形動力夾頭	06
3 jaw finger power chuck	
2LT 兩爪長行程中實油壓卡盤	07
2 jaw long stroke closed center power chuck	
3LT 三爪長行程中實油壓卡盤	08
3 jaw long stroke closed center power chuck	
DPT 兩爪后拉式油壓卡盤	09
2 jaw pull back power chuck	
DPR 三爪后拉式油壓卡盤	10
3 jaw pull back power chuck	
DPF 四爪后拉式油壓夾頭	11
4 jaw pull back power chuck	
PBE 三爪內撐式后拉中實動力夾頭	12
3 jaw inside draw down power chuck	
BTS 二爪三爪共用中空卡盤	13
2 jaw and 3 jaw compatible power chuck	
BW 五爪中空動力卡盤	14
5 jaw through hole power chuck	
BS 六爪中空動力卡盤	15
bs 6 jaw through hole power chuck	
TS-R 六爪中實動力卡盤	16
6 jaw closed center power chuck	
FWD 3爪補償型帶頂心動力卡盤	17
3 jaw compensation with center power chuck	
FRS 3爪齒式帶頂尖浮動卡盤	18
3 jaw serration model with center floating chuck	
OC 液壓同步夾具	19
hydraulic synchronization chuck	
非標夾具--可根據工件定制	20
non standard fixture can be customized according to the workpiece	

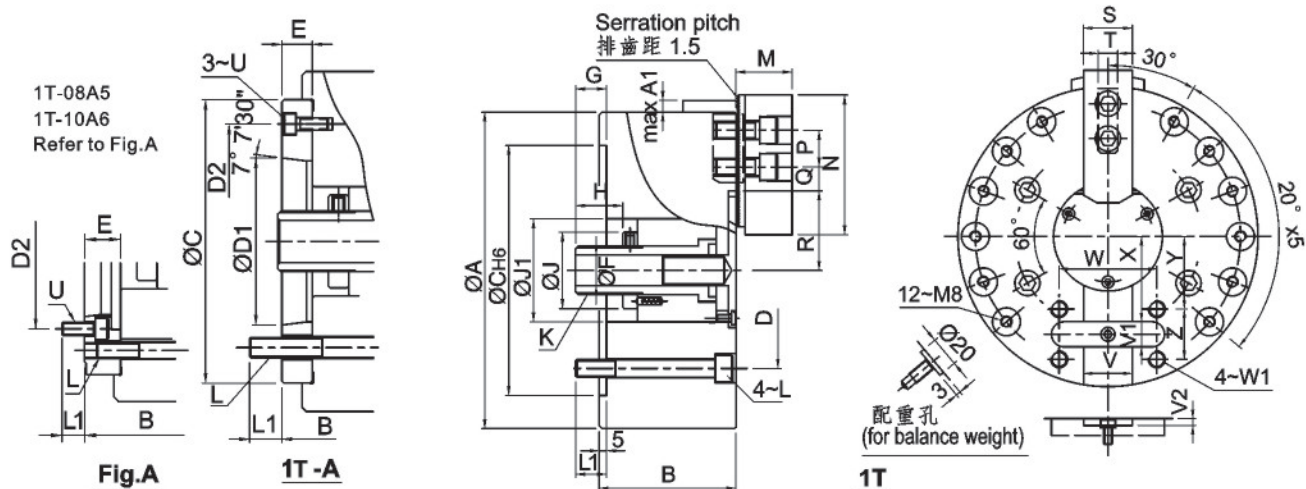
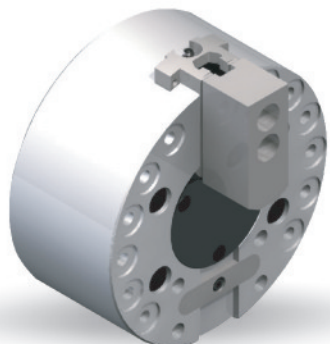


> 1T SERIES

單爪中實型超長爪行程動力夾頭

SINGLE JAW POWER CHUCK

- ◎ 中實曲柄型單爪夾頭，超長爪行程。
- ◎ 適用於治具的夾持。
- ◎ 高剛性結構及高夾持精度。
- ◎ Non through hole crank type single jaw power chuck, very long jaw stroke.
- ◎ Suitable for clamping the jig.
- ◎ Construction of high rigidity and high clamping accuracy.



規格 Spec 型號 Model	楔心行程 Plunger stroke (mm)	爪行程(直徑) Jaw stroke (Dia.) (mm)	直徑夾持範圍 Clamping Range Dia. (mm)	容許油壓缸推力 Max.D.B.pull KN(Kgf)	最大夾持力 Max clamping force KN(Kgf)	最高轉速 Max RPM	慣性矩 I Kg·m ²	重量 (Kg)	適用回轉缸 Matching cyl.	最大使用壓力 Max.pressure Mpa (Kgf/cm ²)
1T-06A5	20	16	17-168	12.3(1250)	27.3(2780)	3800	0.05	15	S-100R/S-125R	1.7(17.5)
1T-08A5	25	20	20-215	15.7(1600)	37.2(3800)	3000	0.15	27.5	S-100R/S-125R	1.4(14.3)
1T-08A6	25	20	20-215	15.7(1600)	37.2(3800)	3000	0.15	26	S-100R/S-125R	1.4(14.3)
1T-10A6	30	24	25-254	21.6(2200)	48.5(4950)	2400	0.28	41	S-100R/S-125R	1.9(19.5)
1T-10A8	30	24	25-254	21.6(2200)	48.5(4950)	2400	0.28	40	S-100R/S-125R	1.9(19.5)

規格 Spec 型號 Model	A	A1	B	B(Ap.)	C(H6)	D	D1	D2	E	F	G max	G min	H	J	J1	K max	L	L1	L1(Ap.)
1T-06A5	168	9.5	80	90	140	104.8	82.56	116	15	21	37	17	25	46	54	M30X1.5	M10	16	16
1T-08A5	215	8	93	111	170	133.4	82.56	104.8	23	21	46	21	32	52	70	M33X1.5	M12	21	19
1T-08A6	215	8	93	105	170	133.4	106.38	150	17	21	46	21	32	52	70	M33X1.5	M12	21	20
1T-10A6	254	13.5	108	128	220	171.4	139.72	133.4	25	30	47	17	30	62	90	M45X1.5	M16	25	20
1T-10A8	254	13.5	108	121	220	171.4	139.72	190	18	30	47	17	30	62	90	M45X1.5	M16	25	27

規格 Spec 型號 Model	M	N	P	Q max	Q min	R max	R min	S	T	U	V(H6)	V1(h9)	V2	W	W1	X	Y	Z
1T-06A5	8	M16	6-M10	4-M6	4-M6	3-M5	6-M10	73	23	35	35	15	5	64	M10	45	36	30
1T-08A5	9	M20	6-M12	6-M10	4-M10	3-M6	6-M12	82	26	40	40	18	5	70	M12	61	52	36
1T-08A6	9	M20	6-M12	4-M6	4-M10	3-M6	6-M12	82	26	40	40	18	5	70	M12	61	52	36
1T-10A6	9	M24	6-M16	6-M12	4-M10	3-M6	6-M14	100	32	46	50	20	5	90	M12	71	58.5	45
1T-10A8	9	M24	6-M16	4-M8	4-M10	3-M6	6-M14	100	32	46	50	20	5	90	M12	71	58.5	45

* 保留技術更改的權利，恕不另行通知 Subject to technology changes without prior information
* 非標準需求可訂做 Non-standard requirements can be made

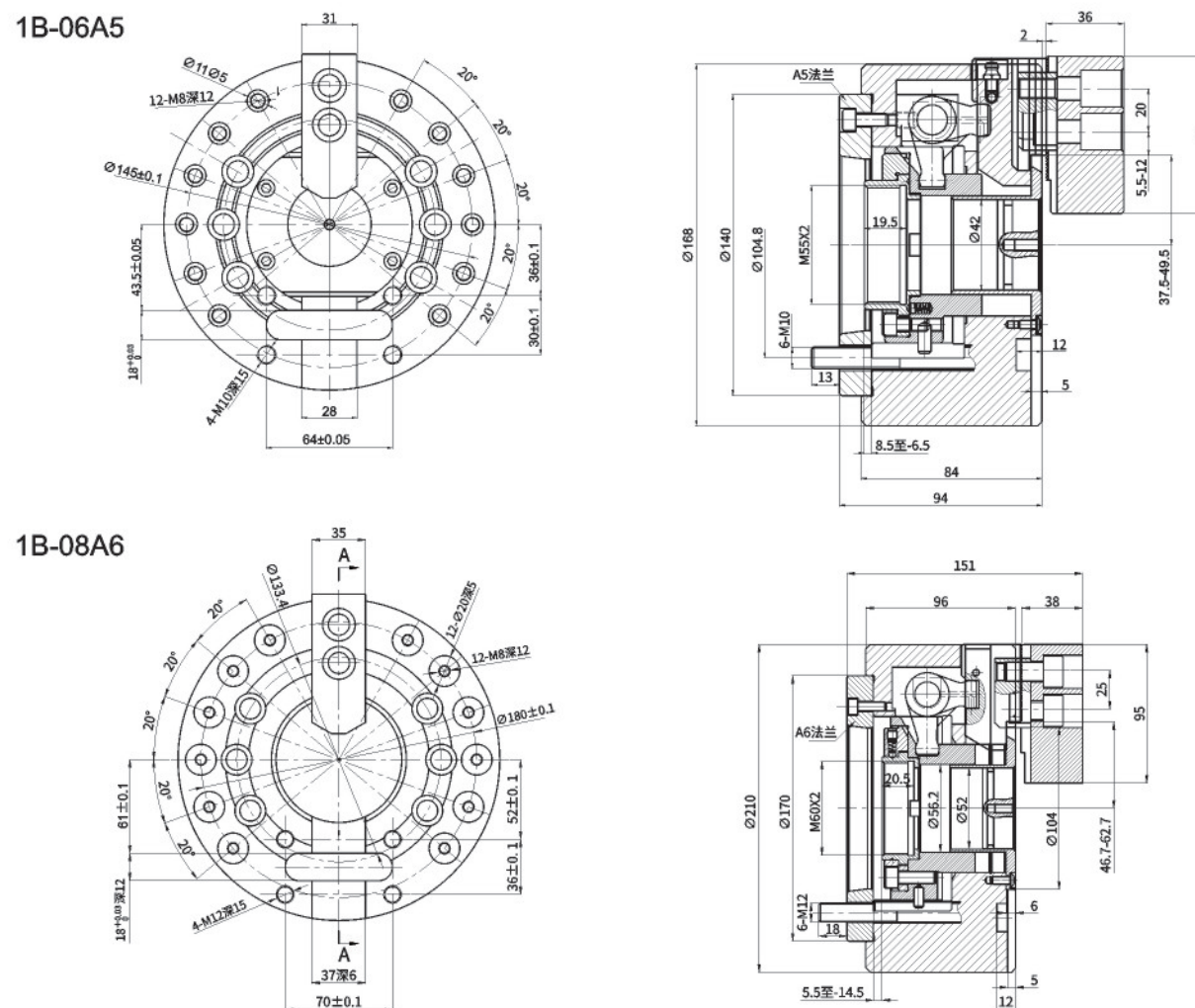
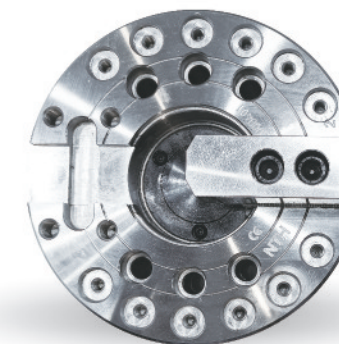


> 1B SERIES

單爪中空超長行程動力夾頭

SINGLE JAW THROUGH HOLE POWER CHUCK

- ◎ 中空單爪夾頭，超長爪行程。
- ◎ 適用於治具夾持。
- ◎ 高剛性結構及高精度夾持。
- ◎ Single jaw through hole power chuck, super long jaw stroke.
- ◎ Suitable for clamping the jig.
- ◎ Construction of high rigidity and high clamping accuracy.



規格 Spec 型號 Model	楔心行程 Plunger stroke (mm)	爪行程直徑 Jaw stroke (Dia.) (mm)	直徑夾持範圍 Clamping Range Dia. (mm)	容許油壓缸推力 Max.Pull forceKN KN (Kgf)	最大夾持力 Max clamping force KN (Kgf)	最高轉速 Max RPM	慣性矩 I Kg·m ²	重量 Weight (Kg)	適合油缸 Matching Cylinder	最大使用壓力 Max.pressureMpa (Kgf/cm ²)
1B-06A5	15	12	10-169	15.7(1600)	17.2(1760)	3600	0.05	15	H-1246/HK-1246	1.7(17)
1B-08A6	20	32	10-210	22.8(2330)	27(2750)	3000	0.15	26	H-1552/HK-1552	1.5(15)

* 保留技術更改的權利，恕不另行通知 Subject to technology changes without prior information
* 非標準需求可訂做 Non-standard requirements can be made

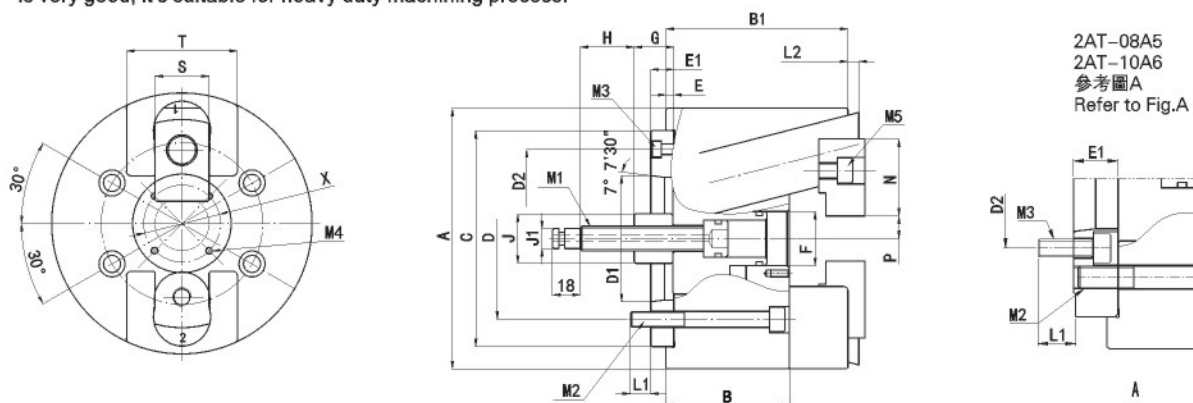
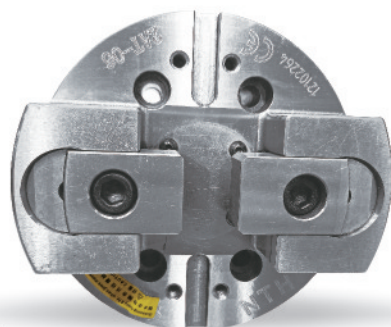


> 2AT SERIES

兩爪強力後拉固鎖式動力夾頭

2 JAW PULL LOCK POWER CHUCK

- ◎ 可同時將工件作徑向夾持與軸向後拉，使工件緊貼定位基準面不上浮。
- ◎ 可配合氣密檢測，進行軸向位置確認，適合對長度的進行高精度加工。
- ◎ 此夾頭為圓柱滑動結構及高剛性硬化處理的本體，並經過軸孔精磨，確保高夾持精度與耐用度，適合使用于重切削的場合。
- ◎ To do radial clamp and axial pull down simultaneously, it can keep the workpiece attaching close to the base surface of the chuck. During clamping process, there is almost no workpiece uplifting movement.
- ◎ It can go with Air-tight pressure and detect to inspect the axial position, it's suitable for high precision length machining work.
- ◎ This chuck is Pin arbor pull-down mechanism, the chuck body is heat-treated and fine bored, the clamping precision and durability is very good, it's suitable for heavy duty machining process.



規格 Spec 型號 Model	模心行程 Plunger stroke (mm)	爪行程直徑 Jaw stroke (Dia) (mm)	直徑夾持範圍 Clamping Range Dia. (mm)	容許油壓缸推力 Max. D.B. pull KN (Kgf)	最大夾持力 Max. clamping force KN (Kgf)	最高轉速 Max RPM	慣性矩 I Kg · m²	重量 Weight (Kg)	適合油缸 Matching Cylinder	最大使用壓力 Max. pressure Mpa (Kgf/cm²)
2AT-05A4	10	5.2	16-48	8.1(830)	25.0(2550)	6000	0.02	7.1	SLA-75/S-80	2.3(23)
2AT-06A5	15	7.8	22-60	16.7(1700)	52.4(5350)	6000	0.05	13.8	SLA-100/S-100	2.4(24)
2AT-08A5	20	10.3	32-90	23.7(2420)	74.5(7600)	5000	0.14	25.9	SLA-100/S-100	3.4(34)
2AT-08A6	20	10.3	32-90	23.7(2420)	74.5(7600)	5000	0.14	24	SLA-100/S-100	3.4(34)
2AT-10A6	20	10.3	45-120	34.3(3500)	107.8(11100)	4000	0.36	50	SLA-125/S-125	3.2(32)
2AT-10A8	20	10.3	45-120	34.3(3500)	107.8(11100)	4000	0.36	48.5	SLA-125/S-125	3.2(32)

規格 Spec 型號 Model	A	B	B1	C(H6)	D	D1	D2	E	E1	F	G max	G min	H
2AT-05A4	135	70	100	110	82.6	63.51	96	4	15	30	29	19	32
2AT-06A5	168	88	128	140	104.8	82.56	116	5	15	35	39	24	32
2AT-08A5	210	100	145	170	133.4	82.56	104.8	5	23	45	44	24	38
2AT-08A6	210	100	145	170	133.4	106.38	150	5	17	45	44	24	38
2AT-10A6	254	110	160	220	171.4	106.38	133.4	5	25	55	44	24	38
2AT-10A8	254	110	160	220	171.4	139.72	190	5	18	55	44	24	38

規格 Spec 型號 Model	J1	L1	L2 min	M1	M2	M3(Ad.)	M4	M5	N	P min	S	T	X
2AT-05A4	11	13	±5	M14	4-M10	4-M6	4-M5	2-M10	45	8	28	60	40
2AT-06A5	13	16	±7.5	M16	4-M10	4-M6	4-M5	2-M12	50	10	35	72	50
2AT-08A5	17	18	±10	M20	4-M12	4-M10	4-M6	2-M12	63	12.5	40	85	60
2AT-08A6	17	18	±10	M20	4-M12	4-M6	4-M6	2-M12	63	12.5	40	85	60
2AT-10A6	17	20	±10	M20	4-M16	4-M12	4-M6	2-M14	74	15	50	100	70
2AT-10A8	17	20	±10	M20	4-M16	4-M8	4-M6	2-M14	74	15	50	100	70

* 保留技術更改的權利，恕不另行通知 Subject to technology changes without prior information
 * 非標準要求可訂做 Non-standard requirements can be made

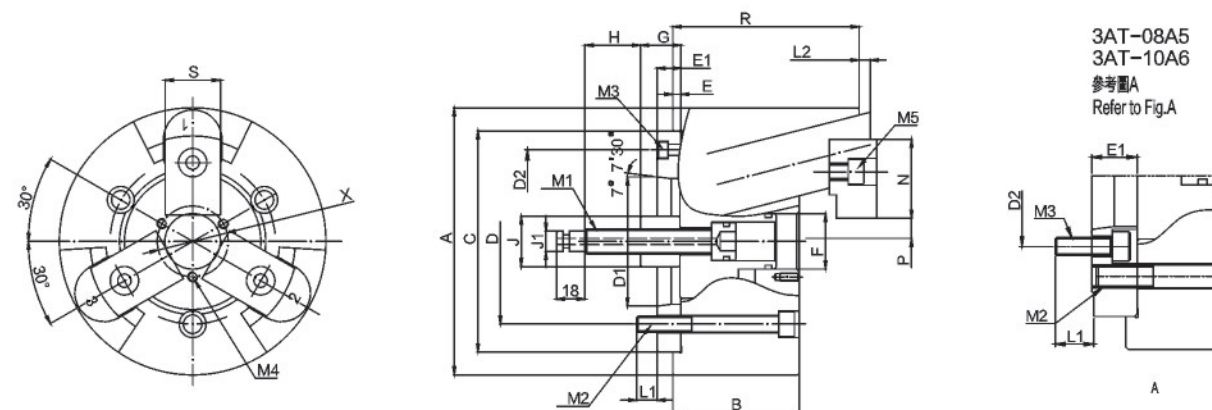
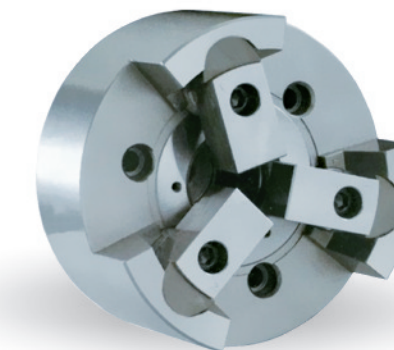


> 3AT SERIES

三爪強力後拉固鎖式動力夾頭

3 JAW PULL LOCK POWER CHUCK

- ◎ 可同時將工件作徑向夾持與軸向後拉，使工件緊貼定位基準面不上浮。
- ◎ 可配合氣密檢測，進行軸向位置確認，適合對長度的進行高精度加工。
- ◎ 此夾頭為圓柱滑動結構及高剛性硬化處理的本體，並經過軸孔精磨，確保高夾持精度與耐用度，適合使用于重切削的場合。
- ◎ To do radial clamp and axial pull down simultaneously, it can keep the workpiece attaching close to the base surface of the chuck. During clamping process, there is almost no workpiece uplifting movement.
- ◎ It can go with Air-tight pressure and detect to inspect the axial position, it's suitable for high precision length machining work.
- ◎ This chuck is Pin arbor pull-down mechanism, the chuck body is heat-treated and fine bored, the clamping precision and durability is very good, it's suitable for heavy duty machining process.



規格 Spec 型號 Model	模心行程 Plunger stroke (mm)	爪行程直徑 Jaw stroke (Dia) (mm)	最大夾持直徑 Max. clamping dia (mm)	最小夾持直徑 Min. clamping dia (mm)	容許油壓缸推力 Max. D.B. pull KN (Kgf)	最大夾持力 Max. clamping force KN (Kgf)	最高轉速 Max RPM	慣性矩 I Kg · m²	重量 Weight (Kg)	適合油缸 Matching Cylinder	最大使用壓力 Max. pressure Mpa (Kgf/cm²)
3AT-06A5	15	7.8	100	25	18.0(1835)	58.0(5910)	6000	0.05	17	SLN-100/SLAN-100	2.0(20)
3AT-08A5	20	10.3	130	25	25.0(2550)	80.0(8150)	5000	0.14	29	SLN-125/SLAN-125	2.5(25)
3AT-08A6	20	10.3	130	25	25.0(2550)	80.0(8150)	5000	0.14	27.5	SLN-125/SLAN-125	2.2(22)
3AT-10A6	20	10.3	160	35	35.0(3570)	100.0(10100)	4000	0.36	53.5	SLN-125/SLAN-125	3.1(31)
3AT-10A8	20	10.3	160	35	35.0(3570)	100.0(10100)	4000	0.36	51.5	SLN-125/SLAN-125	3.1(31)

規格 Spec 型號 Model	A	B	B1	C(H6)	D	D1	D2	E	E1	F	G max	G min	H
3AT-06A5	168	88	128	140	104.8	82.56	116	5	15	35	30	15	35
3AT-08A5	210	100	145	170	133.4	82.56	104.8	5	23	45	27	7	38
3AT-08A6	210	100	145	170	133.4	106.38	150	5	17	45	27	7	38
3AT-10A6	254	110	160	220	171.4	106.38	133.4	5	25	55	31	11	41
3AT-10A8	254	110	160	220	171.4	139.72	190	5	18	55	31	11	41

規格 Spec 型號 Model	J1	J2	L1	L2 min	M1	M2	M3(Ad.)	M4	M5	N	P min	S	X
3AT-06A5	32	13	13	8	M16	3-M10	3-M6	3-M5	3-M10	50	12.5	30	50
3AT-08A5	37	16	17	9	M20	3-M12	6-M10	3-M6	3-M12	63	12.5	35	60
3AT-08A6	37	16	17	9	M20	3-M12	3-M6	3-M6	3-M12	63	12.5	35	60
3AT-10A6	48	20	19	9	M24	3-M16	6-M12	3-M6	3-M14	74	17.5	40	70
3AT-10A8	48	20	19	9	M24	3-M16	3-M8	3-M6	3-M14	74	17.5	40	70

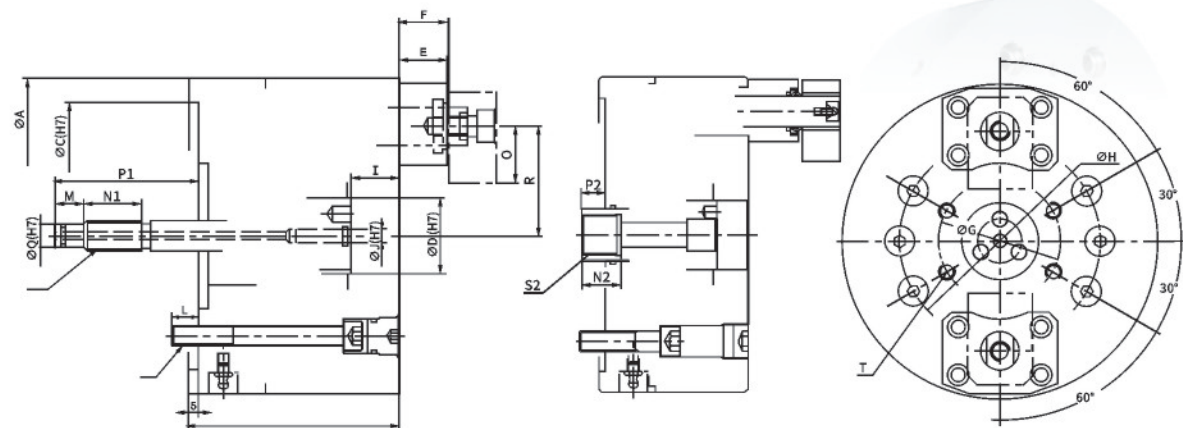
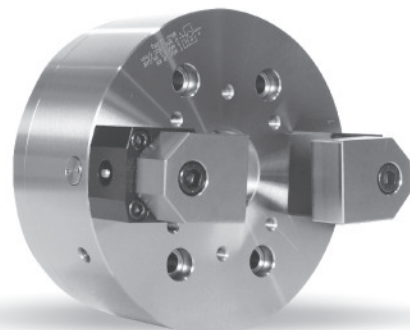
* 保留技術更改的權利，恕不另行通知 Subject to technology changes without prior information
 * 非標準要求可訂做 Non-standard requirements can be made

> 2F SERIES

二爪中實型指形動力夾頭

2 JAW FINGER POWER CHUCK

- ◎ 夾持工件端面，防止工件夾持變形，適合薄壁工件加工。
- ◎ 夾持補償機構，可夾持不規則斷面之工件。
- ◎ 夾頭中心可裝設工件密著確認裝置。
- ◎ Prevent deformation of workpiece for gripping the terminal surface, suitable for thin workpiece process.
- ◎ The compensating mechanism of gripping that can grasp the workpieces of the irregular surface.
- ◎ Additional check device able to install in the center of chuck.



規格 Spec 型號 Model	A (mm)	B (mm)	C (mm)	D (mm)	E (mm)	F (mm)	ØG (mm)	ØH (mm)	I (mm)	J (mm)
2F-05	135	110	110	37	25	28~48	50	82.6	5~25	8
2F-06	165	110	140	40	25	28~48	64	104.8	5~25	8
2F-08	210	120	170	56	40	43~68	104	133.4	5~25	16
2F-10	254	120	220	56	40	43~68	140	171.4	5~25	16
2F-12	304	120	220	56	40	43~68	190	171.4	6~26	-

規格 Spec 型號 Model	K (mm)	L (mm)	M (mm)	N (mm)	O (mm)	P1 (mm)	P2 (mm)	Q (mm)	R (mm)	S1 (mm)
2F-05	4-M10	14	15	30	30	50~70	-	9	42.5	M12X1.75P
2F-06	6-M10	14	15	30	30	50~70	-	12	57.5	M16X2.0P
2F-08	6-M12	18	15	30	40	50~70	0~20	16	77.5	M20X2.5P
2F-10	6-M16	18	15	30	40	50~70	0~20	16	99.5	M20X2.5P
2F-12	6-M16	18	15	30	40	-	0~20	-	124.5	-

規格 Spec 型號 Model	S2 (mm)	T (mm)	爪上下行程 Jaw stroke (mm)	最大拉力 Max.Pull Force kgf(KN)	最高使用壓力 Max.Pressure kgf/cm² (Mpa)	最高回轉速 Max.Speed (min ⁻¹)	搭配油缸型號 Matching Cylinder	重量 Weight (Kg)
2F-05	-	3-M6	20	3.5	0.9	4000	S-100	10
2F-06	-	3-M8	20	6.5	1.4	3600	S-100	11
2F-08	M32x1.5	3-M8	20	13	2.5	2900	S-125	22
2F-10	M32x1.5	3-M8	20	13	2.5	2400	S-125	34
2F-12	M32x1.5	6-M8	20	13	2.5	2100	S-150	46

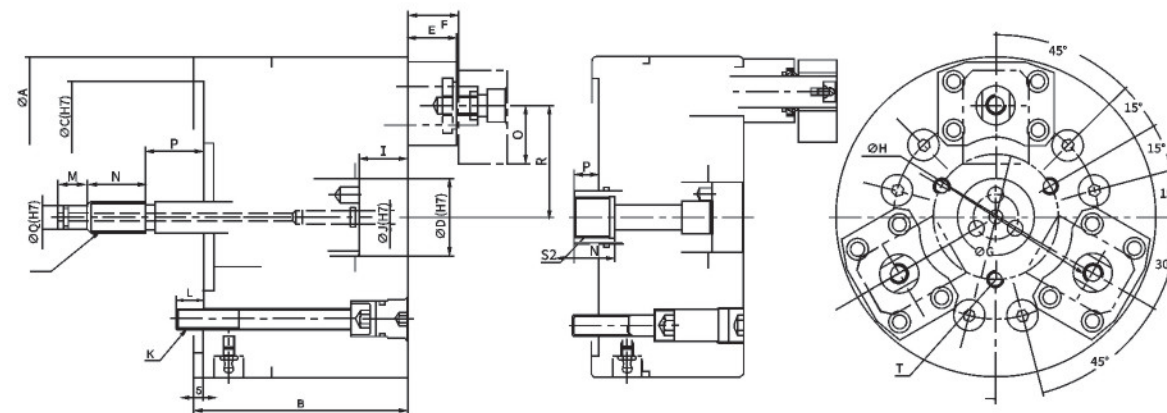
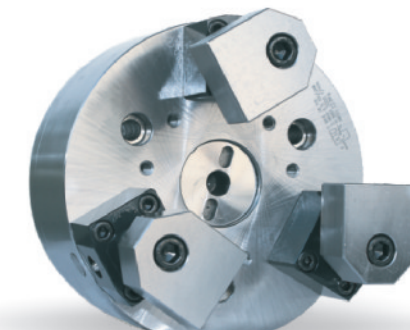
* 保留技術更改的權利，恕不另行通知 Subject to technology changes without prior information
* 非標準需求可訂做 Non-standard requirements can be made

> 3F SERIES

三爪中實型指形動力夾頭

3 JAW FINGER POWER CHUCK

- ◎ 夾持工件端面，防止工件夾持變形，適合薄壁工件加工。
- ◎ 夾持補償機構，可夾持不規則斷面之工件。
- ◎ 夾頭中心可裝設工件密著確認裝置。
- ◎ Prevent deformation of workpiece for gripping the terminal surface, suitable for thin workpiece process.
- ◎ The compensating mechanism of gripping that can grasp the workpieces of the irregular surface.
- ◎ Additional check device able to install in the center of chuck.



規格 Spec 型號 Model	A (mm)	B (mm)	C (mm)	D (mm)	E (mm)	F (mm)	ØG (mm)	ØH (mm)	I (mm)	J (mm)
3F-05	135	110	110	37	25	28~48	50	82.6	5~25	8
3F-06	165	110	140	40	25	28~48	64	104.8	5~25	8
3F-08	210	120	170	56	40	43~68	104	133.4	5~25	16
3F-10	254	120	220	56	40	43~68	140	171.4	5~25	16
3F-12	304	120	220	56	40	43~68	190	171.4	6~26	-

規格 Spec 型號 Model	K (mm)	L (mm)	M (mm)	N (mm)	O (mm)	P1 (mm)	P2 (mm)	Q (mm)	R (mm)	S1 (mm)
3F-05	3-M10	14	15	30	30	50~70	-	9	42.5	M12X1.75P
3F-06	6-M10	14	15	30	30	50~70	-	12	57.5	M16X2.0P
3F-08	6-M12	18	15	30	40	50~70	0~20	16	77.5	M20X2.5P
3F-10	6-M16	18	15	30	40	50~70	0~20	16	99.5	M20X2.5P
3F-12	6-M16	18	15	30	40	-	0~20	-	124.5	-

規格 Spec 型號 Model	S2 (mm)	T (mm)	爪上下行程 Jaw stroke (mm)	最大拉力 Max.Pull Force kgf(KN)	最高使用壓力 Max.Pressure kgf/cm² (Mpa)	最高回轉速 Max.Speed (min ⁻¹)	搭配油缸型號 Matching Cylinder	重量 Weight (Kg)
3F-05	-	3-M6	20	5	0.9	4000	S-100	12
3F-06	-	3-M8	20	9	1.4	3600	S-100	13
3F-08	M32x1.5	3-M8	20	18	2.5	2900	S-125	24
3F-10	M32x1.5	3-M8	20	18	2.5	2400	S-125	37
3F-12	M32x1.5	6-M8	20	18	2.5	2100	S-150	49

* 保留技術更改的權利，恕不另行通知 Subject to technology changes without prior information
* 非標準需求可訂做 Non-standard requirements can be made

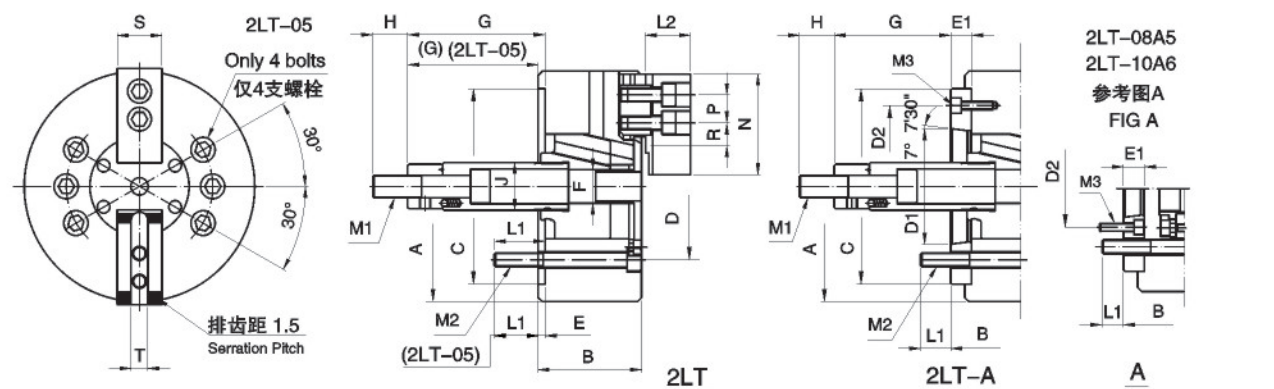


> 2LT SERIES

兩爪長行程中實油壓卡盤

2 JAW LONG STROKE CLOSED CENTER POWER CHUCK

- ◎ 兩爪超大行程動力夾頭
- ◎ 夾頭滑動面經硬化處理及精密研磨，并直接潤滑。
- ◎ 高剛性、高精度及高轉速。
- ◎ 2 jaw very long stroke closed center power chuck
- ◎ Matching surfaces of all parts are hardened, ground and lubricated directly
- ◎ Construction of high rigidity and high clamping accuracy and high rotary speed.



規格 Spec 型號 Model	樞心行程 Plunger stroke (mm)	爪行程直徑 Jaw stroke (Dia) (mm)	直徑夾持範圍 Clamping Range Dia. (mm)	容許油壓缸推力 Max. D.B. pull KN (Kgf)	最大夾持力 Max. clamping force KN (Kgf)	最高轉速 Max RPM	慣性矩 I Kg · m ²	重量 Weight (Kg)	適合油缸 Matching Cylinder	最大使用壓力 Max. pressure Mpa (Kgf/cm ²)
2LT-05	15	10.9	14-135	6.5(660)	11(1120)	4500	0.02	6.5	S-80	1.6(16)
2LT-06A5	20	14.5	14-165	14.3(1460)	24(2450)	4000	0.05	14	S-100	2.0(20)
2LT-08A5	23	16.7	17-210	19.6(2000)	36.6(3730)	3500	0.14	28	S-125	1.9(19)
2LT-08A6	23	16.7	17-210	19.6(2000)	36.6(3730)	3500	0.14	27	S-125	1.9(19)
2LT-10A6	27	19.6	22-254	26.1(2660)	49.3(5030)	3000	0.30	42	S-150	1.9(19)
2LT-10A8	27	19.6	22-254	26.1(2660)	49.3(5030)	3000	0.30	40	S-150	1.9(19)
2LT-12A8	30	21.8	26-304	36(3670)	66(6730)	2500	0.73	63	S-150	2.4(24)

規格 Spec 型號 Model	A	B	B(Ap)	C(H6)	D	D1	D2	E	E1	F	G max	G max(Ap)	G min	G min(Ap)	H
2LT-05	135	55	55	80	100	-	-	7	-	-	9	9	-6	-6	35
2LT-06A5	165	74	84	140	104.8	82.56	116	5	15	21	101.5	86.5	81.5	66.5	36
2LT-08A5	210	85	103	170	133.4	82.56	104.8	5	23	25	127	104	-104	81	36
2LT-08A6	210	85	97	170	133.4	106.38	150	5	17	25	127	110	-104	81	36
2LT-10A6	254	89	109	220	171.4	106.38	133.4	5	25	34	160	133	133	106	36
2LT-10A8	254	89	102	220	171.4	139.72	190	5	18	34	160	142	133	115	36
2LT-12A8	304	106	118	220	171.4	139.72	190	6	18	34	163	145	133	115	36

規格 Spec 型號 Model	J	L1	L1(Ap)	L2	M1	M2	M3	N	P	R max	R min	S	T
2LT-05	28	14	14	32	M12X1.75	3-M8	-	62	14	13.5	6	25	10
2LT-06A5	34	14	14	39	M16X2	4-M10	4-M6	73	20	18	7.5	31	12
2LT-08A5	38	20	17	41	M20X2.5	6-M12	6-M10	95	25	22.3	11.8	35	14
2LT-08A6	38	20	18	41	M20X2.5	6-M12	4-M6	95	25	22.3	11.8	35	14
2LT-10A6	45	18	18	46	M20X2.5	6-M16	6-M12	110	30	30.8	11.3	40	16
2LT-10A8	45	18	25	46	M20X2.5	6-M16	4-M8	110	30	30.8	11.3	40	16
2LT-12A8	50	22	25	54	M20X2.5	6-M16	4-M8	130	30	48.8	12.3	50	18

* 保留技術更改的權利，恕不另行通知 Subject to technology changes without prior information
* 非標需求可訂做 Non-standard requirements can be made

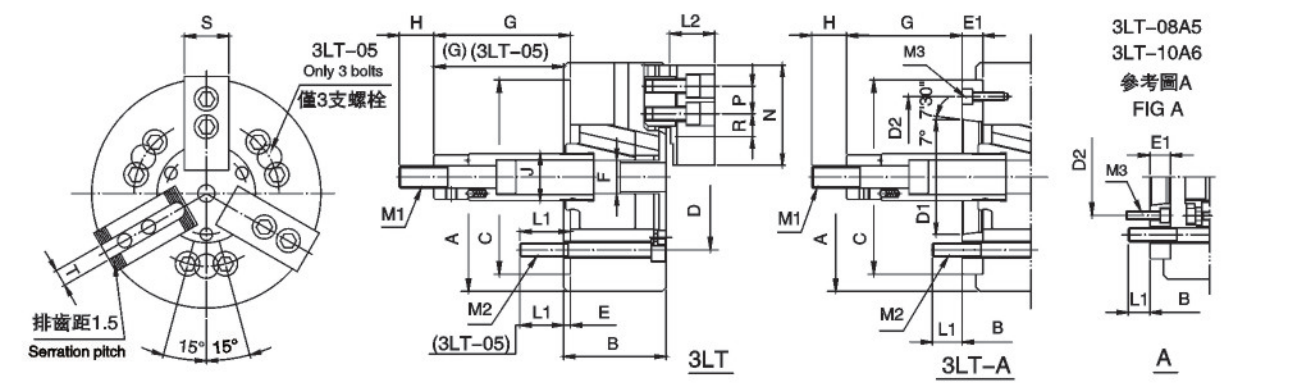
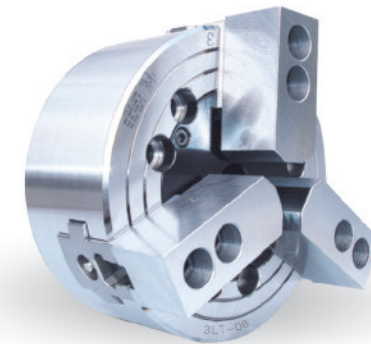


> 3LT SERIES

三爪長行程中實油壓卡盤

3 JAW LONG STROKE CLOSED CENTER POWER CHUCK

- ◎ 三爪超大行程中實動力夾頭
- ◎ 夾頭滑動面經硬化處理及精密研磨，并直接潤滑。
- ◎ 高剛性、高精度及高轉速。
- ◎ 3 jaw very long stroke closed center power chuck
- ◎ Matching surfaces of all parts are hardened, ground and lubricated directly
- ◎ Construction of high rigidity and high clamping accuracy and high rotary speed.



規格 Spec 型號 Model	樞心行程 Plunger stroke (mm)	爪行程直徑 Jaw stroke (Dia) (mm)	直徑夾持範圍 Clamping Range Dia. (mm)	容許油壓缸推力 Max. D.B. pull KN (Kgf)	最大夾持力 Max. clamping force KN (Kgf)	最高轉速 Max RPM	慣性矩 I Kg · m ²	重量 Weight (Kg)	適合油缸 Matching Cylinder	最大使用壓力 Max. pressure Mpa (Kgf/cm ²)
3LT-05	15	10.9	14-135	9.8(1000)	16.4(2550)	4500	0.02	6.5	S-80	2.3(23)
3LT-06A5	20	14.5	14-165	21.6(2200)	36(3680)	4000	0.05	14	S-100	3.0(30)
3LT-08A5	23	16.7	17-210	29.4(3000)	54.9(5600)	3500	0.14	28	S-125	2.9(29)
3LT-08A6	23	16.7	17-210	29.4(3000)	54.9(5600)	3500	0.14	27	S-125	2.9(29)
3LT-10A6	27	19.6	22-254	39.2(4000)	74(7550)	3000	0.30	42	S-150	2.8(28)
3LT-10A8	27	19.6	22-254	39.2(4000)	74(7550)	3000	0.30	40	S-150	2.8(28)
3LT-12A8	30	21.8	26-304	54(5500)	99(10100)	2500	0.73	63	S-150	3.6(36)

規格 Spec 型號 Model	A	B	B(Ap)	C(H6)	D	D1	D2	E	E1	F	G max	G max(Ap)	G min	G min(Ap)	H
3LT-05	135	55	55	80	100	-	-	7	-	-	9	9	-6	-6	35
3LT-06A5	165	74	84	140	104.8	82.56	116	5	15	22	101.5	86.5	81.5	66.5	36
3LT-08A5	210	85	103	170	133.4	82.56	104.8	5	23	24	127	104	-104	81	36
3LT-08A6	210	85	97	170	133.4	106.38	150	5	17	24	127	110	-104	81	36
3LT-10A6	254	89	109	220	171.4	106.38	133.4	5	25	32	160	133	133	106	36
3LT-10A8	254	89	102	220	171.4	139.72	190	5	18	32	160	142	133	115	36
3LT-12A8	304	106	118	220	171.4	139.72	190	6	18	32	163	145	133	115	36

規格 Spec 型號 Model	J	L1	L1(Ap)	L2	M1	M2	M3	N	P	R max	R min	S	T
3LT-05	28	14	14	32	M12X1.75	3-M8	-	62	14	13.5	6	25	10
3LT-06A5	34	14	14	39	M16X2	6-M10	3-M6	73	20	18	7.5	31	12
3LT-08A5	34	20	17	41	M20X2.5	6-M12	6-M10	95	25	22.3	11.8	35	14
3LT-08A6	38	20	18	41	M20X2.5	6-M12	3-M6	95	25	22.3	11.8	35	14
3LT-10A6	38	18	18	46	M20X2.5	6-M16	6-M12	110	30	30.8	11.3	40	16
3LT-10A8	45	18	25	46	M20X2.5	6-M16	3-M8	110	30	30.8	11.3	40	16
3LT-12A8	45	22	25	54	M20X2.5	6-M16	3-M8	130	30	48.8	12.3	50	18

* 保留技術更改的權利，恕不另行通知 Subject to technology changes without prior information
* 非標需求可訂做 Non-standard requirements can be made

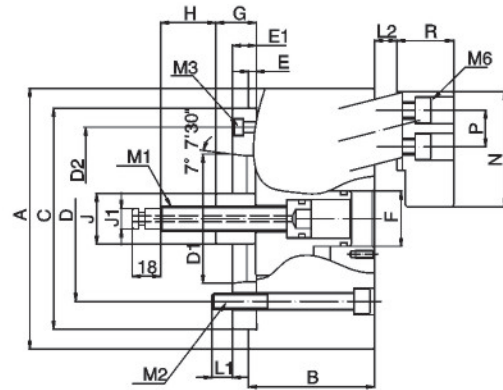
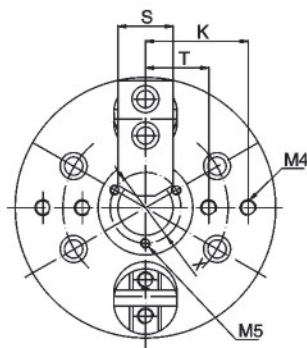
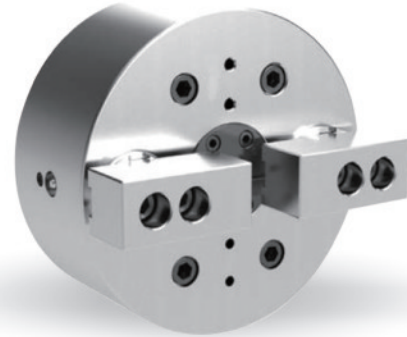


> DPT SERIES

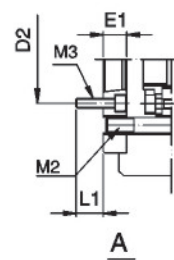
兩爪後拉式油壓卡盤

2 JAW PULL BACK POWER CHUCK

- ◎ DPT後拉式油壓夾頭，在徑向夾持工件的同時向後斜拉。
- ◎ 工件緊貼定位端面，不會上浮，適合對鑄件及鍛件的重切削加工。
- ◎ 夾頭採用圓柱滑動結構，重複夾持精度與定長精度好。
- ◎ 可搭配氣密檢測裝置。
- ◎ DPT 2 jaw pull back power chuck, it pulls back while radial clamping the workpiece.
- ◎ When the workpiece is clamped onto the basic position end, it can't move up, it's suitable for processing casting and forgings parts.
- ◎ The cylindrical sliding structure is adopted, the repeating clamping accuracy and length fixing accuracy is excellent.
- ◎ It can go with air detection device to check if the clamping is OK or not.



DPT-08A5
DPT-10A6
參考圖A FIG A



規格 Spec 型號 Model	樞心行程 Plunger stroke (mm)	爪行程直徑 Jaw stroke (Dia) (mm)	直徑夾持範圍 Clamping Range Dia. (mm)	容許油壓缸推力 Max. D.B. pull KN (Kgf)	最大夾持力 Max. clamping force KN (Kgf)	最高轉速 Max RPM	慣性矩 I Kg·m ²	重量 Weight (Kg)	適合油缸 Matching Cylinder	最大使用壓力 Max. pressure Mpa (Kgf/cm ²)
DPT-06A5	15	7.8	22-165	6(610)	16.7(1700)	3500	0.05	14	SLA-75	1.7(17)
DPT-08A5	20	10.3	28-210	10.7(1090)	30.0(3060)	3000	0.14	26	SLA-100	1.5(15)
DPT-08A6	20	10.3	28-210	10.7(1090)	30.0(3060)	3000	0.14	24	SLA-100	1.5(15)
DPT-10A6	20	10.3	35-254	14(1430)	40.0(4080)	2500	0.36	50	SLA-125	1.3(13)
DPT-10A8	20	10.3	35-254	14(1430)	40.0(4080)	2500	0.36	49	SLA-125	1.3(13)

規格 Spec 型號 Model	A	B	C(H6)	D	D1	D2	E	E1	F	G max	G min	H	J	J1	K	L1
DPT-06A5	165	88	140	104.8	82.56	116	5	15	35	30	15	35	32	13	55	13
DPT-08A5	210	100	170	133.4	82.56	104.8	5	23	45	27	7	38	37	16	75	17
DPT-08A6	210	100	170	133.4	106.38	150	5	17	45	27	7	38	37	16	75	17
DPT-10A6	254	110	220	171.4	106.38	133.4	5	25	55	31	11	41	48	20	85	19
DPT-10A8	254	110	220	171.4	139.72	190	5	18	55	31	11	41	48	20	85	19

規格 Spec 型號 Model	L2 min	M1	M2	M3	M4	M5	M6	N	P	R	S	T	X
DPT-06A5	8	M16	6-M10	4-M6	4-M6	3-M5	6-M10	73	23	35	35	35	45
DPT-08A5	9	M20	6-M12	6-M10	4-M10	3-M6	6-M12	82	26	40	40	50	60
DPT-08A6	9	M20	6-M12	4-M6	4-M10	3-M6	6-M12	82	26	40	40	50	60
DPT-10A6	9	M24	6-M16	6-M12	4-M10	3-M6	6-M14	100	32	46	50	55	70
DPT-10A8	9	M24	6-M16	4-M8	4-M10	3-M6	6-M14	100	32	46	50	55	70

* 保留技術更改的權利，恕不另行通知 Subject to technology changes without prior information
* 非標需求可訂做 Non-standard requirements can be made

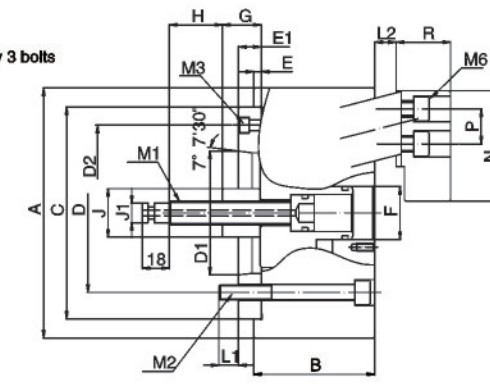
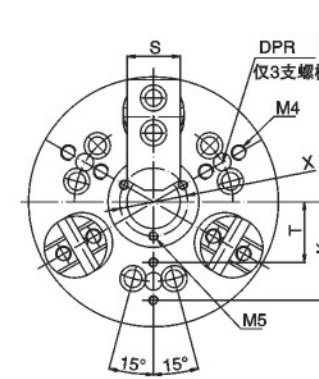


> DPR SERIES

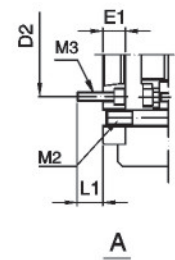
三爪後拉式油壓卡盤

3 JAW PULL BACK POWER CHUCK

- ◎ DPR後拉式油壓夾頭，在徑向夾持工件的同時向後斜拉。
- ◎ 工件緊貼定位端面，不會上浮，適合對鑄件及鍛件的重切削加工。
- ◎ 夾頭採用圓柱滑動結構，重複夾持精度與定長精度好。
- ◎ 可搭配氣密檢測裝置。
- ◎ DPR 3 jaw pull back power chuck, it pulls back while radial clamping the workpiece.
- ◎ When the workpiece is clamped onto the basic position end, it can't move up, it's suitable for processing casting and forgings parts.
- ◎ The cylindrical sliding structure is adopted, the repeating clamping accuracy and length fixing accuracy is excellent.
- ◎ It can go with air detection device to check if the clamping is OK or not.



DPR-08A5
DPR-10A6
參考圖A FIG A



規格 Spec 型號 Model	樞心行程 Plunger stroke (mm)	爪行程直徑 Jaw stroke (Dia) (mm)	直徑夾持範圍 Clamping Range Dia. (mm)	容許油壓缸推力 Max. D.B. pull KN (Kgf)	最大夾持力 Max. clamping force KN (Kgf)	最高轉速 Max RPM	慣性矩 I Kg·m ²	重量 Weight (Kg)	適合油缸 Matching Cylinder	最大使用壓力 Max. pressure Mpa (Kgf/cm ²)
DPR-06A5	15	7.8	22-165	9(910)	25.0(2550)	3500	0.05	17	SLA-75	2.5(25)
DPR-08A5	20	10.3	28-210	16(1630)	45.0(4590)	3000	0.14	29	SLA-100	2.2(22)
DPR-08A6	20	10.3	28-210	16(1630)	45.0(4590)	3000	0.14	27.5	SLA-100	2.2(22)
DPR-10A6	20	10.3	35-254	21(2140)	60.0(6120)	2500	0.36	54	SLA-125	1.9(19)
DPR-10A8	20	10.3	35-254	21(2140)	60.0(6120)	2500	0.36	52	SLA-125	1.9(19)

規格 Spec 型號 Model	A	B	C(H6)	D	D1	D2	E	E1	F	G max	G min	H	J	J1	K	L1
DPR-06A5	165	88	140	104.8	82.56	116	5	15	35	30	15	35	32	13	55	13
DPR-08A5	210	100	170	133.4	82.56	104.8	5	23	45	27	7	38	37	16	75	17
DPR-08A6	210	100	170	133.4	106.38	150	5	17	45	27	7	38	37	16	75	17
DPR-10A6	254	110	220	171.4	106.38	133.4	5	25	55	31	11	41	48	20	85	19
DPR-10A8	254	110	220	171.4	139.72	190	5	18	55	31	11	41	48	20	85	19

規格 Spec 型號 Model	L2 min	M1	M2	M3	M4	M5	M6	N	P	R	S	T	X
DPR-06A5	8	M16	6-M10	3-M6	6-M6	3-M5	6-M10	73	23	35	35	35	45
DPR-08A5	9	M20	6-M12	6-M10	6-M10	3-M6	6-M12	82	26	40	40	50	60
DPR-08A6	9	M20	6-M12	3-M6	6-M10	3-M6	6-M12	82	26	40	40	50	60
DPR-10A6	9	M24	6-M16	6-M12	6-M10	3-M6	6-M14	100	32	46	50	55	70
DPR-10A8	9	M24	6-M16	3-M8	6-M10	3-M6	6-M14	100	32	46	50	55	70

* 保留技術更改的權利，恕不另行通知 Subject to technology changes without prior information
* 非標需求可訂做 Non-standard requirements can be made

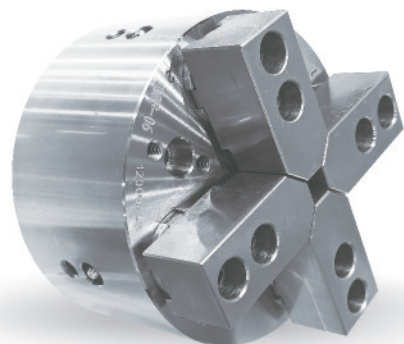


> DPF SERIES

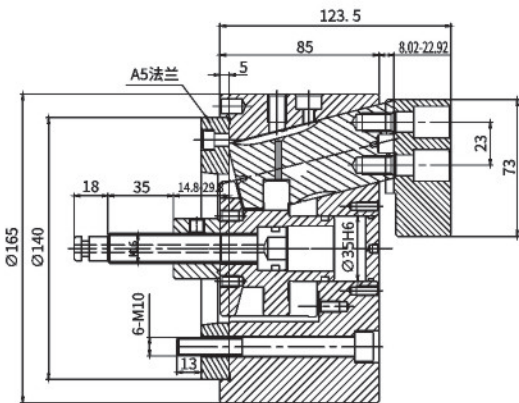
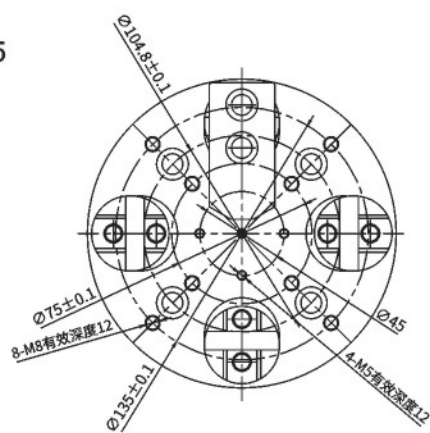
四爪後拉式油壓夾頭

4 JAW PULL BACK POWER CHUCK

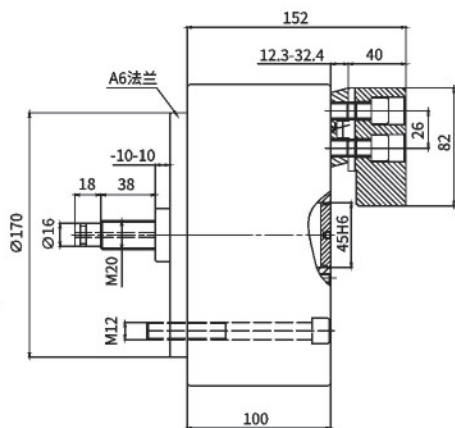
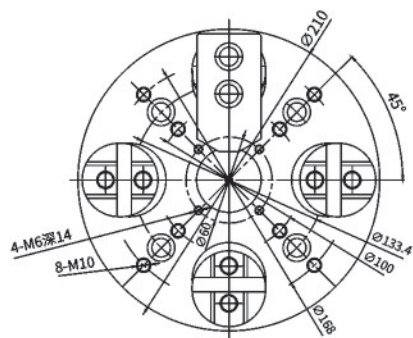
- ◎ DPR後拉式油壓夾頭，在徑向夾持工件的同時向後斜拉。
- ◎ 工件緊貼定位端面，不會上浮，適合對鑄件及鍛件的重切削加工。
- ◎ 夾頭採用圓柱滑動結構，重複夾持精度與定長精度高。
- ◎ 可搭配氣密檢測裝置。
- ◎ DPR 4 jaw pull back power chuck, it pulls back while radial clamping the workpiece.
- ◎ When the workpiece is clamped onto the basic position end, it can't move up, it's suitable for processing casting and forgings parts.
- ◎ The cylindrical sliding structure is adopted, the repeating clamping accuracy and length fixing accuracy is excellent.
- ◎ It can go with air detection device to check if the clamping is OK or not.



DPF-06A5



DPF-08A6



規格 Spec 型號 Model	模心行程 Plunger stroke (mm)	爪行程直徑 Jaw stroke (Dia) (mm)	直徑夾持範圍 Clamping Range Dia. (mm)	容許油壓缸推力 Max.Pull forceKN KN (Kgf)	最大夾持力 Max. clamping force KN (Kgf)	最高轉速 Max RPM	慣性矩 Kg·m ²	重量 Weight (Kg)	適合油缸 Matching Cylinder	最大使用壓力 Max.pressureMpa (Kg/cm ²)
DPF-06A5	15	7.8	22-165	9(910)	25(2550)	3500	0.05	15	S-75R/SNK-75	2.5(25)
DPF-08A6	20	10.3	28-210	16(1630)	45(4590)	3000	0.15	26	S-100R/SNK-100	1.2(22)

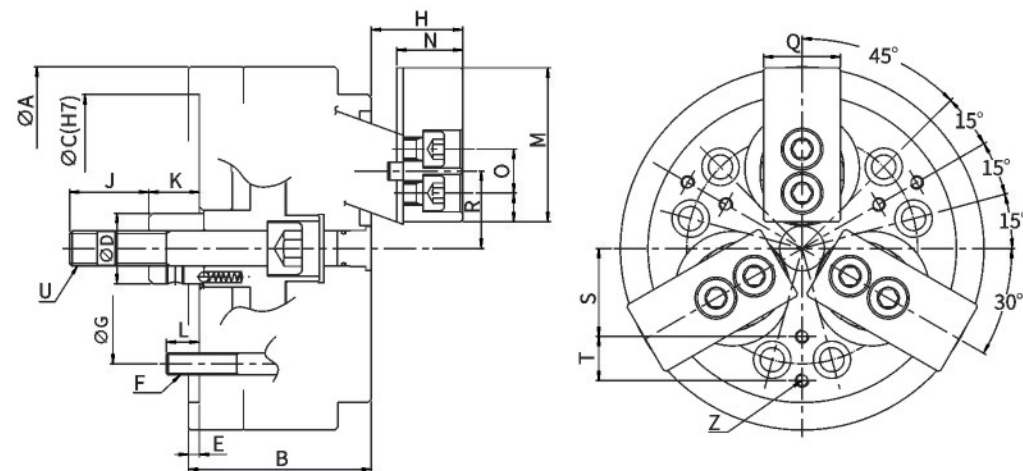
* 保留技術更改的權利，恕不另行通知 Subject to technology changes without prior information
* 非標準需求可訂做 Non-standard requirements can be made

> PBE SERIES

三爪內撐式後拉中實動力夾頭

3 JAW INSIDE DRAW DOWN POWER CHUCK

- ◎ 內撐後拉式動力夾頭，適用於內徑夾持。
- ◎ 可同時將工件做徑向夾持與軸向後拉，使工件不上浮并緊貼定位基準面。
- ◎ 適用於高精度制程加工。
- ◎ 3 Jaw Expansible Pull Lock Power Chuck, It's suitable for internal gripping
- ◎ Radial clamping and axial pulling down at the same time, to keep the workpiece tightly close to the base surface of the chuck, to avoid workpiece from uplifting.
- ◎ It's suitable for high accuracy processing.



規格 Spec 型號 Model	模心行程 Plunger stroke (mm)	爪行程直徑 Jaw stroke (Dia) (mm)	直徑夾持範圍 Clamping Range Dia. (mm)	容許油壓缸推力 Max.Pull forceKN KN (Kgf)	最大夾持力 Max. clamping force KN (Kgf)	最高轉速 Max RPM	重量 Weight (Kg)	適合油缸 Matching Cylinder	最大使用壓力 Max.pressureMpa (Kg/cm ²)
PBE-05	8	5.8	25-110	11.7(1193)	22.5(2295)	5000	8	S-100R	2.2(22)
PBE-06	8	5.8	40-140	14.7(1499)	24.5(2499)	5000	13	S-100R	3.4(33)
PBE-08	10	7.2	48-180	24.5(2499)	44.1(4498)	4500	26	S-125R	3.5(34)
PBE-10	15	10.8	65-220	34.3(3499)	58.8(5998)	4000	43.5	S-125R	3.1(30)
PBE-12	15	10.8	80-270	44.1(4498)	73.5(7497)	3500	68	S-150R	3.1(30)

規格 Spec 型號 Model	A	B	C(H7)	D	E	F	G	H	J	K
PBE-05	135	75	110	28	5	3-M10	82.6	28-36	26	14-22
PBE-06	165	80	140	32	5	6-M10	104.8	34-42	36	23-31
PBE-08	210	95	170	38	5	6-M10	133.4	45-55	36	25-35
PBE-10	254	110	220	50	5	6-M10	171.4	50-65	46	32-47
PBE-12	304	125	220	50	5	6-M10	171.4	55-70	46	32-47

規格 Spec 型號 Model	L	M	N	O	P	Q	R	S	T	U	Z
PBE-05	15	56	24.5		20	30	24.6-27.5	25		M12*1.75	3-M6
PBE-06	15	70	30	20	13	35	35-37.9	40	20	M16*2	6-M6
PBE-08	15	84	41	26	18	40	43-46.6	50	25	M20*2.5	6-M8
PBE-10	22	100	46	32	22	50	28-36	50	30	M24*3	6-M8
PBE-12	22	120	51	36	24	60	28-36	70	40	M24*3	6-M10

* 保留技術更改的權利，恕不另行通知 Subject to technology changes without prior information
* 非標準需求可訂做 Non-standard requirements can be made

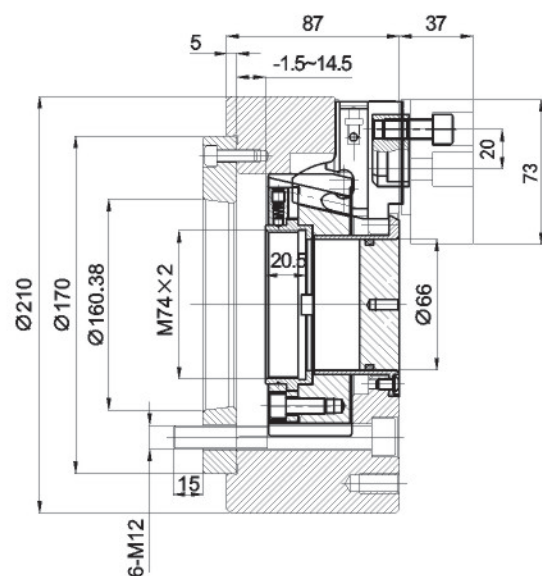
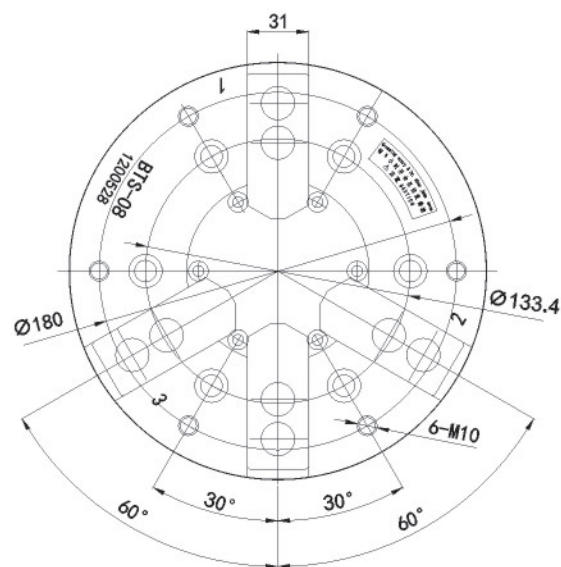


> BTS SERIES

二爪三爪共用中空卡盤

2 JAW AND 3 JAW COMPATIBLE POWER CHUCK

- ◎ 同一個卡盤，可實現兩爪卡盤及三爪卡盤的功能。
- ◎ 在夾持圓形工件切換為异形工件時，祇須調整卡爪，無需更換卡盤。
- ◎ 卡盤所有滑動面均經過表面硬化及研磨處理，以提高回轉精度與使用壽命。
- ◎ The function of 2 jaw chuck and 3 jaw chuck can be used in one same chuck.
- ◎ When the round workpiece need change to irregular type, just change the chuck jaws, no need to change the chuck.
- ◎ All chuck's sliding surfaces are hardened and ground to increase rotary accuracy and longer service life.



規格 Spec 型號 Model	通孔直徑 Through hole dia. (mm)	楔心行程 Plunger stroke (mm)	爪行程直徑 Jaw stroke (Dia) (mm)	最大夾持直徑 Max clamping dia Kg · m²	最小夾持直徑 Min clamping dia (mm)	容許油壓缸推力(兩爪) Max.D.B.Pull KN(Kgf)	容許油壓缸推力(三爪) Max.D.B.Pull KN(Kgf)
BTS-08A6	66	16	7.4	210	23	14.7(1470)	21.5(2200)

規格 Spec 型號 Model	最大夾持力(兩爪) Max clamping force KN(Kgf)	最大夾持力(三爪) Max clamping force KN(Kgf)	最高轉速 Max RPM	重量 Weight Kg	適合油壓缸 Matched cylinders	最大使用壓力(兩爪) Max.pressure Mpa(Kgf/cm²)	最大使用壓力(三爪) Max.pressure Mpa(Kgf/cm²)
BTS-08A6	37.9(3870)	56.8(5800)	4200	25	H-1552	1.2(12)	1.8(18)

* 保留技術更改的權利，恕不另行通知 Subject to technology changes without prior information
* 非標準需求可訂做 Non-standard requirements can be made

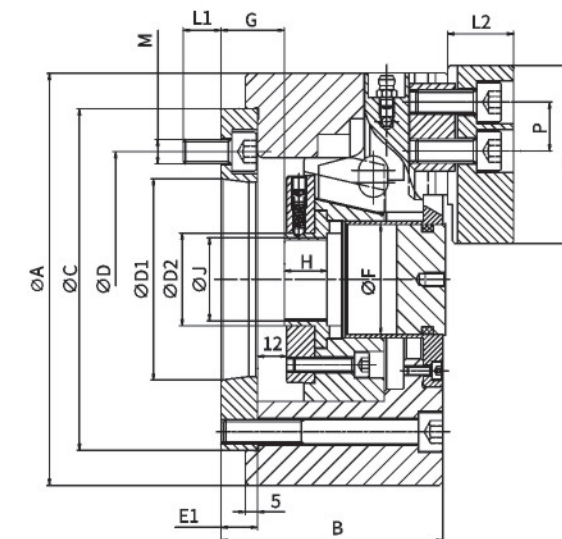
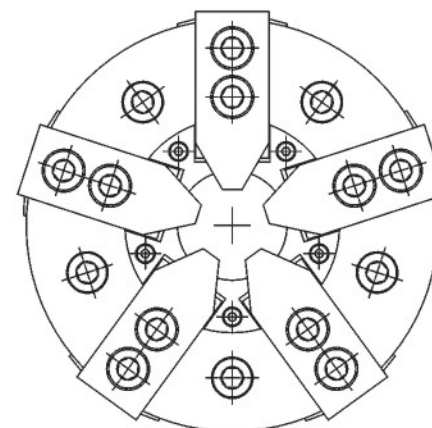
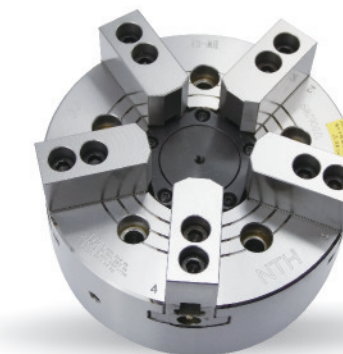


> BW SERIES

五爪中空動力卡盤

5 JAW THROUGH HOLE POWER CHUCK

- ◎ 多點夾持，針對薄壁管形，環形工件，可改善工件夾持過程中的變形問題。
- ◎ 另有五爪中實卡盤可選。
- ◎ More contact point clamping, it can improve the deformation issue during clamping process for thin wall pipe or ring like workpiece.
- ◎ 5 jaw closed center power chuck is optional.



規格 Spec 型號 Model	楔心行程 Plunger stroke (mm)	爪行程直徑 Jaw stroke (Dia) (mm)	直徑夾持範圍 Clamping Range Dia. (mm)	容許油壓缸推力 Max. D.B. pull KN (Kgf)	最大夾持力 Max. clamping force KN (Kgf)	最高轉速 Max RPM	重量 Weight (Kg)	適合油缸 Matching Cylinder	最大使用壓力 Max.pressure Mpa (Kgf/cm²)
BW-06A5	12	5.5	15-168	17.1(2200)	35.8(5500)	5000	15.5	H-1246/HK-1246	2.74(20)
BW-08A6	16.5	7.6	13-210	34.3(3500)	85.8(8750)	5000	25.5	H-1552/HK-1552	2.8(28)
BW-10A8	21	8.9	46-254	34.3(3000)	85.8(7000)	2500	43.5	H-1875/HK-1875	2.1(21)

規格 Spec 型號 Model	A	B	C(H6)	D	D1	E1	G max	G min	H
BW-06A5	169	91	140	104.8	82.563	15	26	14	17.5
BW-08A6	210	110	170	133.4	106.375	24	39	22.5	19.5
BW-10A8	254	113	220	171.4	139.719	18	28.5	7.5	25

規格 Spec 型號 Model	F	L1	L2	J	D2	M	N	P	S
BW-206A5	45	15.5	30	M34*1.5	38	10	73	20	31
BW-208A6	52	19	36	M60*2.0	66	12	73	20	31
BW-210A8	81	24	38	M85*2.0	97	16	95	25	35

* 保留技術更改的權利，恕不另行通知 Subject to technology changes without prior information
* 非標準需求可訂做 Non-standard requirements can be made

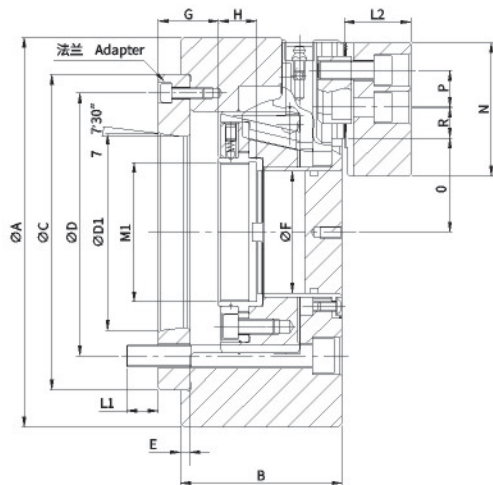
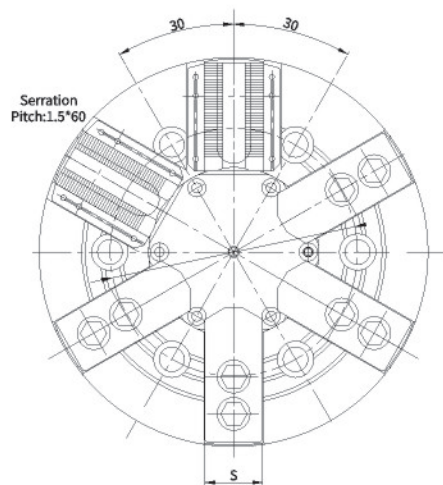


> BS SERIES

六爪中空動力卡盤

BS 6 JAW THROUGH HOLE POWER CHUCK

- ◎ 卡盤多點夾持，針對薄壁管形，環形工件，可改善工件夾持過程中的變形問題。
- ◎ More contact point clamping, it can improve the deformation issue during clamping process for thin wall pipe or ring like workpiece.



規格 Spec 型號 Model	楔心行程 Plunger stroke (mm)	爪行程直徑 Jaw stroke (Dia) (mm)	最大夾持直徑 Max. clamping dia (mm)	最小夾持直徑 Min clamping dia (mm)	容許油壓缸推力 Max.D.B.Pull KN(kgf)
BS-206 A5	12	5.6	168	15	17.1(1750)
BS-208 A6	16	7.4	210	13	34.3(3500)
BS-210 A8	19	8.8	254	46	34.3(3500)
BS-212 A8	30	22	315	37	42.6(4380)

規格 Spec 型號 Model	最大夾持力 Max. clamping force (mm)	最高轉速 Max RPM	慣性距 I kg*m ²	重量 Weight kg	適合油壓缸 Matched cylinders	最大使用壓力 Max.pressure Mpa(kgf/cm ²)
BS-206 A5	35.8(3650)	6000	0.06	15	H-1246	2.0(20)
BS-208 A6	85.8(8750)	5000	0.19	25	H-1552	2.8(28)
BS-210 A8	85.8(8750)	4200	0.35	42	H-1875	2.1(21)
BS-212 A8	80.7(8241)	3300	0.95	66	H-2091	2.1(21)

規格 Spec 型號 Model	A	B	C(H6)	D	D1	E	F	G max	G min
BS-206 A5	169	81	140	104.78	82.56	5	45	26	14
BS-208 A6	210	87	170	133.35	106.38	5.5	66	31.5	15.5
BS-210 A8	254	100	220	171.45	139.72	5.5	86	26.5	7.5
BS-212 A8	320	113	300	235	196.869	6	91	37	7

規格 Spec 型號 Model	H	L1	L2	M1	N	P	O max	O min	R max	R min	S
BS-206 A5	19	18	30	M55*2.0	62	14	42.2	39.4	19.8	7.8	25
BS-208 A6	20.5	17	36	M75*2.0	73	20	50.6	46.9	22.8	9.3	31
BS-210 A8	25	24.5	37	M95*2.0	95	25	59.2	54.8	29.8	14.8	35
BS-212 A8	28	22	42	M130*2.0	110	30	79	68	29.8	14.3	40

◎ 保留技術更改的權利，恕不另行通知 Subject to technology changes without prior information
 ◎ 非標準需求可訂做 Non-standard requirements can be made

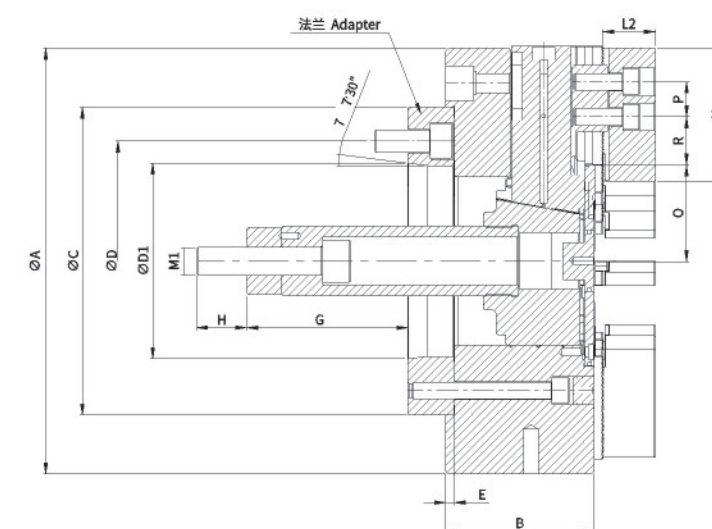
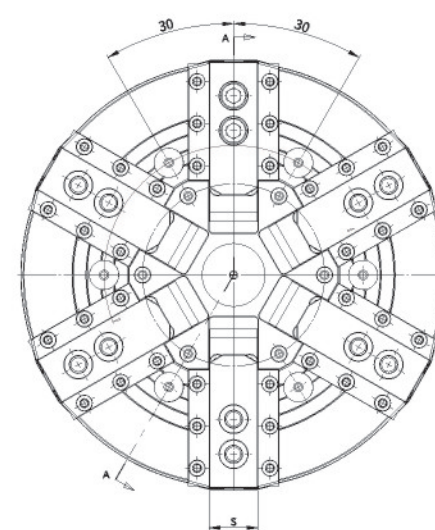
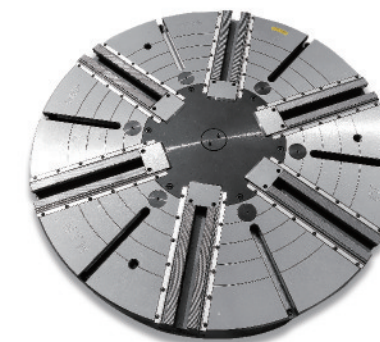


> TS-R SERIES

六爪中實動力卡盤

TS-R 6 JAW CLOSED CENTER POWER CHUCK

- ◎ 卡盤多點夾持，針對薄壁管形，環形工件，可改善工件夾持過程中的變形問題。
- ◎ 卡盤具有防塵功能。
- ◎ More contact point clamping, it can improve the deformation issue during clamping process for thin wall pipe or ring like workpiece.
- ◎ Chips proof function.



規格 Spec 型號 Model	楔心行程 Plunger stroke (mm)	爪行程直徑 Jaw stroke (Dia) (mm)	最大夾持直徑 Max. clamping dia (mm)	最小夾持直徑 Min clamping dia (mm)	容許油壓缸推力 Max.D.B.Pull KN(kgf)
TS-212R A8	30	10.5	304	32	53(5448)
TS-215R A11	35	12.3	381	50	82(8429)

規格 Spec 型號 Model	最大夾持力 Max. clamping force (mm)	最高轉速 Max RPM	慣性距 I kg*m ²	重量 Weight kg	適合油壓缸 Matched cylinders	最大使用壓力 Max.pressure Mpa(kgf/cm ²)
TS-212R A8	142(14597)	3000	0.95	67	S-150	2.1(21)
TS-215R A11	248(25495)	3000	1.95	116	S-200	2.1(21)

規格 Spec 型號 Model	A	B	C(H6)	D	D1	E	G max	G min
TS-212R A8	304	106	220	185	139.719	6	145	115
TS-215R A11	381	116	300	235	196.869	6	82	47

規格 Spec 型號 Model	H	L2	M1	N	P	O max	O min	R max	R min	S
TS-212R A8	36	38	M20*2.5	95	25	74.3	69	46	9	35
TS-215R A11	35	50	M30*3.5	129	30	93	87	56	12	50

◎ 保留技術更改的權利，恕不另行通知 Subject to technology changes without prior information
 ◎ 非標準需求可訂做 Non-standard requirements can be made

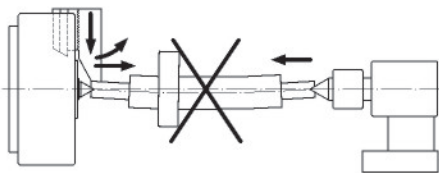
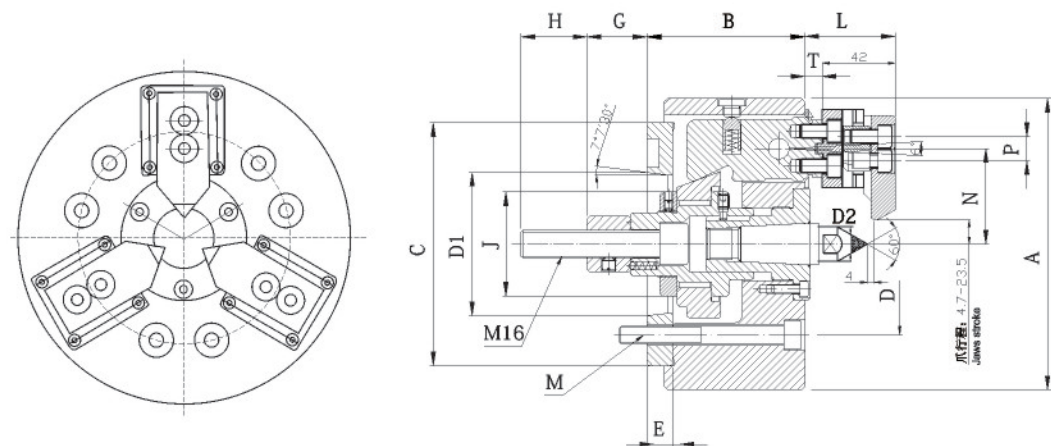
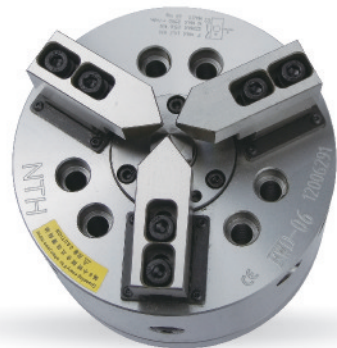


> FWD SERIES

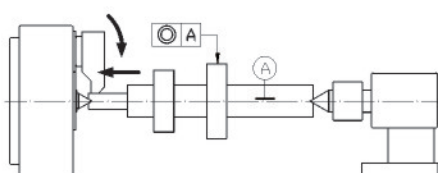
3爪補償型帶頂心動力卡盤

3 JAW COMPENSATION WITH CENTER POWER CHUCK

- ◎ 適用於軸類工件加工，卡盤具有補償式夾緊和後拉的功能，對中心的補償量為5mm。
- ◎ 尾座支撐工件，卡盤補償夾緊後，把工件拉向中心頂尖，依此加工後同軸度會非常好。
- ◎ It's suitable for shaft machining, the chuck have the function of compensation clamping and pulling back, the compensation size is 5mm.
- ◎ The tailstock support the shaft, after compensation clamping, the chuck pull the shaft back to center, better concentricity can be made.



不帶補償夾持的效果,易導致工件彎曲
Without pull back and compensation function, the work bar easy to be bend.



FWD卡盤的夾持效果,所加工的同軸度非常好
FWD chuck clamping effect, the work bar's concentricity can be better.

規格 Spec 型號 Model	楔行程 Plunger stroke (mm)	爪行程直徑 Jaw stroke (Dia) (mm)	直徑夾持範圍 Clamping Range Dia. (mm)	容許油壓缸推力 Max. D.B. pull KN (Kgf)	補償量 Compensation (mm)	最高轉速 Max RPM	慣性矩 I Kg·m ²	重量 Weight (Kg)	適合油缸 Matching Cylinder	最大使用壓力 Max.pressure Mpa (Kgf/cm ²)	
FWD-06A5	16	13	6-35	14.7(1500)	25.0(2550)	5	3500	0.2	13	SNK-100	2.1(21)
FWD-08A6	20	18	16-65	19.6(2000)	34.3(3500)	6	3000	0.5	22	SNK-100	2.8(28)

規格 Spec 型號 Model	A	B	C(H6)	D	D1	D2	E	G	H	J	L	M	N	P	T
FWD-06A5	168	116	140	104.8	82.56	24	15	4-20	38	50	52	M10x120	55	14	34
FWD-08A6	210	127	170	133.4	106.38	32	17	9-29	38	58	61	M12x125	67	20	41.5

備注:
* FWD-06為彈性頂尖,在夾持工件時,以中心為基準補正,同時可使工件接觸到端面,便于軸向定位。

REMARK:
* FWD-06 chuck's center is spring type, when clamping, it's based on the center, the workpiece could be pulled onto the position base, so as to make axial position.

* 保留技術更改的權利,恕不另行通知 Subject to technology changes without prior information
* 非標需求可訂做 Non-standard requirements can be made

> FRS SERIES

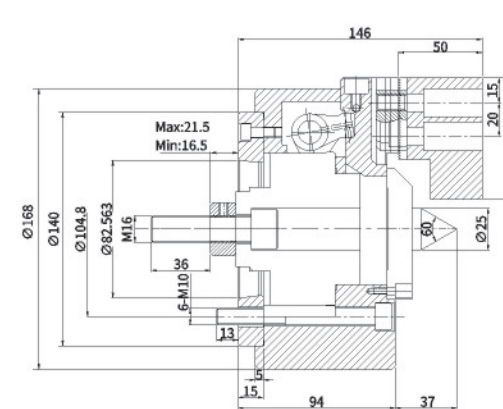
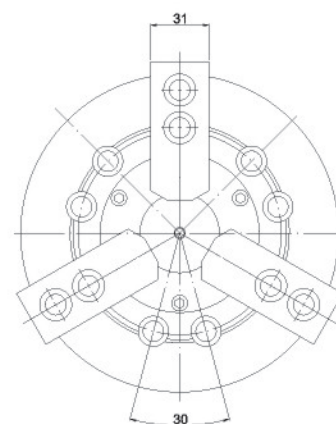
3爪齒式帶頂尖浮動卡盤

3 JAW SERRATION MODEL WITH CENTER FLOATING CHUCK

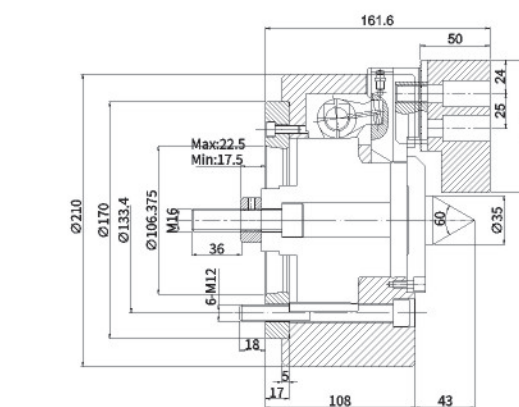
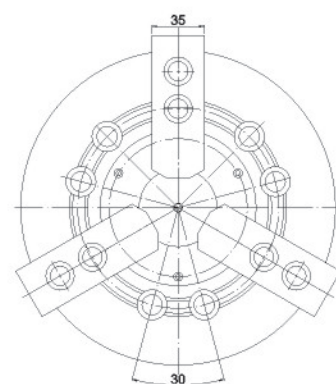
- ◎ FRS 3爪浮動卡盤的卡爪為齒式連接,便于調節卡爪夾持範圍。
- ◎ 適合對軸類工件,需兩端頂尖夾持的加工。
- ◎ 工件通過頂尖定心,重複夾持精度高。
- ◎ FRS 3 jaw with center floating power chuck, its jaws are serration connecting type, it's easy to adjust the jaws clamping range.
- ◎ It's suitable for shaft workpieces which need be held by center from both two ends
- ◎ The workpiece center can be positioned by the center, so the repeating clamping accuracy is high.



FRS-06A5



FRS-08A6



規格 Spec 型號 Model	楔行程 Plunger stroke (mm)	爪行程直徑 Jaw stroke (Dia) (mm)	最大夾持直徑 Max clamping dia (mm)	最小夾持直徑 Min clamping dia (mm)	容許油壓缸推力 Max. D.B. Pull KN(kgf)
FRS-06A5	5	6	160	25	17.1(2200)
FRS-08A6	5	7	200	25	34.3(3500)

規格 Spec 型號 Model	最大夾持力 Max. clamping force KN (Kgf)	最高轉速 Max RPM	重量 Weight (Kg)	適合油缸 Matching Cylinder	最大使用壓力 Max.pressure Mpa (Kgf/cm ²)
FRS-06A5	35.8	3500	15.5	S-100	2.74(20)
FRS-08A6	60	3000	25.5	S-125	2.8(28)

* 保留技術更改的權利,恕不另行通知 Subject to technology changes without prior information
* 非標需求可訂做 Non-standard requirements can be made



> OC SERIES

液壓同步夾具

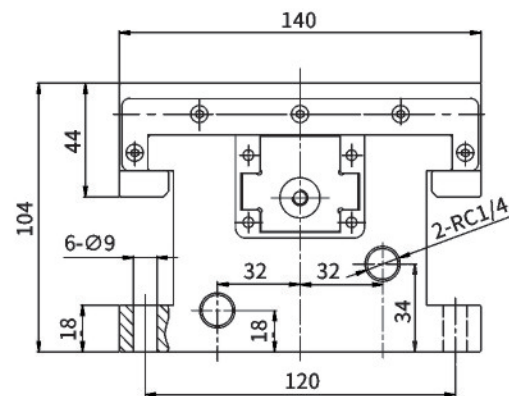
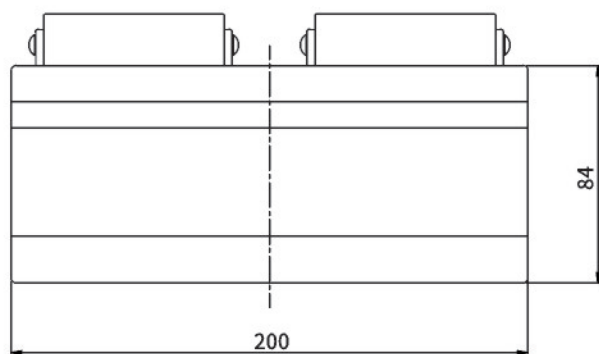
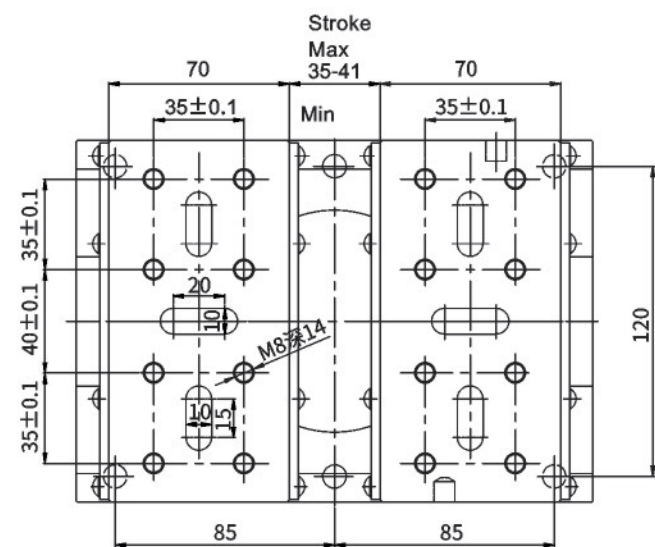
HYDRAULIC SYNCHRONIZATION CHUCK

- ◎ 可用于CNC數控機床工作臺。及自動化裝夾系統。
- ◎ 自定心高精度同步夾持。
- ◎ It's suitable for working on CNC machinery or automatic clamping system.
- ◎ Self centering synchronization clamping to get high precision positioning.



非標夾具--可根據工件定制

CUSTOMIZED CHUCK FOR THE SPECIAL WORKPIECE



(汽車制動鼓) 特殊浮動卡爪
Swing Jaws
For automobile brake drum



(軸加工) 可伸縮卡盤
Retractable chuck
For shaft



(鑄件和鍛件加工) 強力浮動卡盤
Powerful swing lock chuck
For casting or forging parts



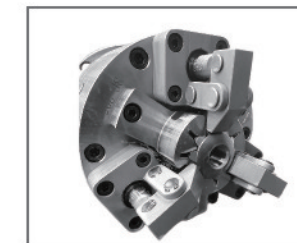
自動分度卡盤
Index chuck



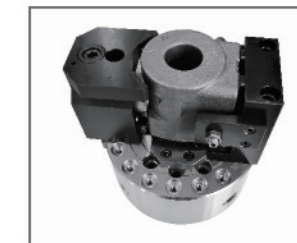
(軸承圈) 橡膠漲套
Rubber flex expanding sleeve
For bearing ring



(異型件或薄壁件加工) 指形卡盤
Finger chuck
For thin wall or abnormal shape



(斜齒輪) 杠杆式指形卡盤
Lever finger chuck
For helical gear



(泵體毛坯加工) 特殊卡盤夾具
Customized fixture
For pump blank



(齒輪) 異型彈性漲套
Flex expanding chuck
For gear



後拉卡盤夾具
Pull back lock chuck



杠杆式指形卡盤
Lever type finger chuck



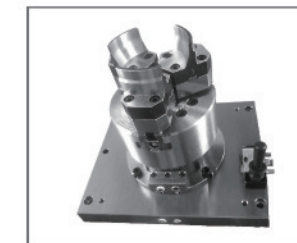
彈性漲套
Flexible expanding sleeve



(汽車傳動軸) 摩擦焊接特殊卡盤
Customized chuck
For automobile transmission shaft



(汽車輪輻) 特殊夾具
Customized chuck
For wheel spokes



加工中心-立式卡盤工裝
CNC Stationary fixture



機床尾座內漲液壓夾具
Hydraulic expanding center

規格 Spec 型號 Model	模心行程 Plunger stroke (mm)	爪行程直徑 Jaw stroke (Dia) (mm)	許用最大推力 Max Pulling force KN (Kgf)	最大夾持力 Max. clamping force KN (Kgf)	最大使用壓力 Max. pressure Mpa (Kgf/cm ²)
OC-140	13	6	12.3(1250)	35.4(3610)	2.9(29)

* 保留技術更改的權利，恕不另行通知 Subject to technology changes without prior information
* 非標需求可訂做 Non-standard requirements can be made

新品持續推出中.....