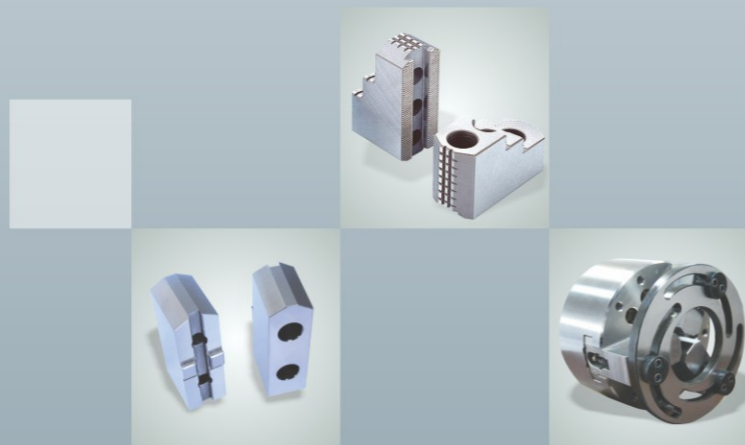
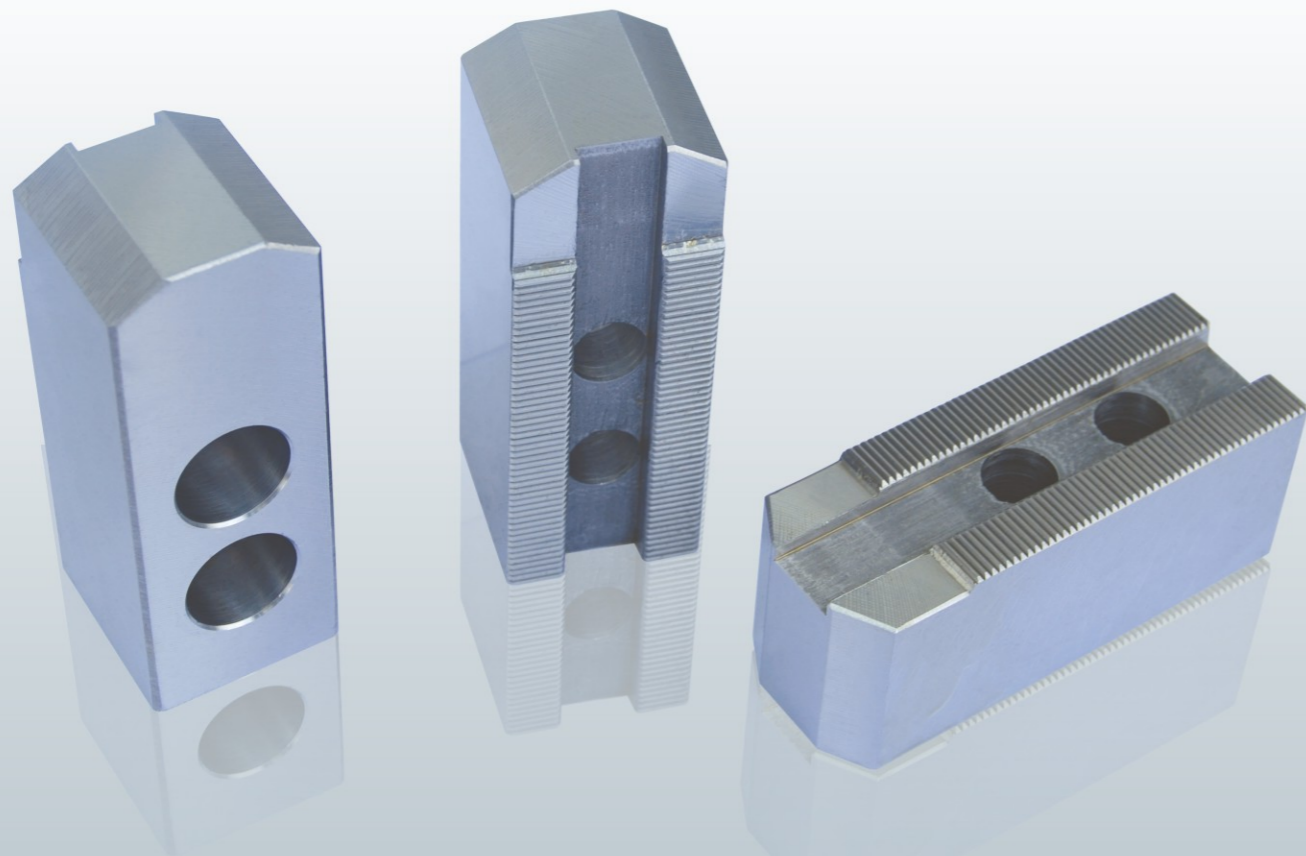
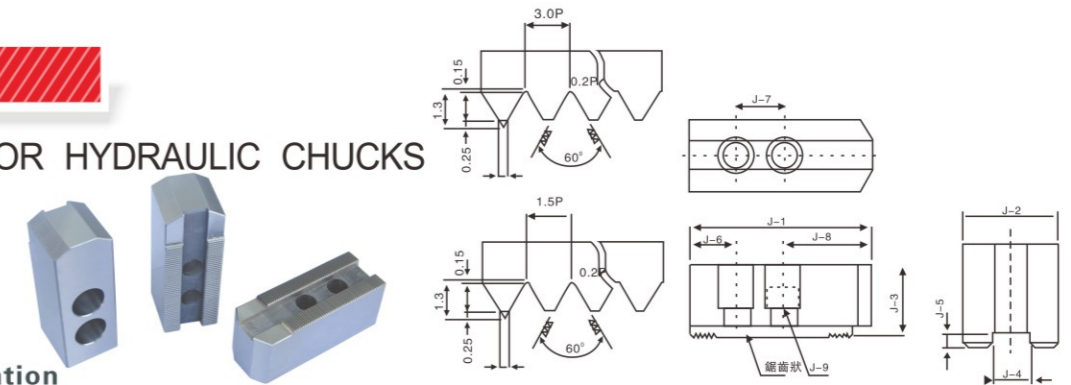


SOFT 軟爪(生爪)系列 JAWS SERIES



油壓軟爪

SOFT JAWS FOR HYDRAULIC CHUCKS

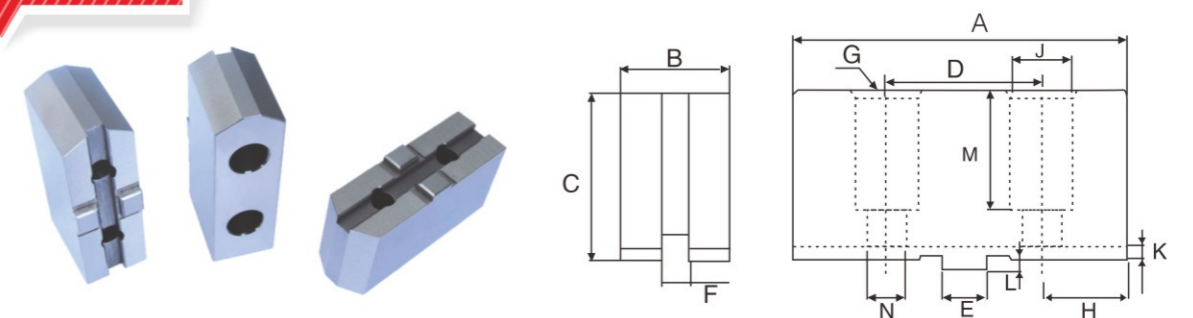


規格 / Specification

規格/尺寸 SPEC./SIZE	長 Length J-1	寬 Width J-2	高 Height J-3	鍵槽寬 Slot width J-4	鍵槽深 Slot depth J-5	J-6	中心孔距 Hole center distance J-7	J-8	螺絲 Screw J-9	齒距 Serration pitch	淨重 N.W.(KG)
SC-04	53	23	23	10	4	9	14	29	M8	1.5×60°	0.42
SC-05	62	25	30	10	4	10	14	38	M8	1.5×60°	0.85
SC-06	73	31	36	12	5	15	20	38	M10	1.5×60° 3.0×60°	1.5
SC-08	95	35	38	14	5	24	25	46	M12	1.5×60° 3.0×60°	2.4
SC-10	110	40	42	16	5	30	30	50	M12	1.5×60° 3.0×60°	3.6
SC-12(中空/Thru)	129	50	50	21	6	39	30	60	M16	1.5×60° 3.0×60°	6.1
SC-12(中實/Non-Thru)	129	50	50	18	6	39	30	60	M14	1.5×60° 3.0×60°	6.2
SC-15(中空) 18"	165	62	62	22	8	37	43	85	M20	1.5×60° 3.0×60°	12.5
SC-15(中實) 18"	165	62	62	25.5(26)	6(9)	37	43	85	M20	1.5×60° 3.0×60°	12.5
SC-24 21"	180	65	70	25	9	40	60	80	M20	3.0×60°	16.2
SC-32	210	74	90	25	9	40	80	90	M20	3.0×60°	29.2
SC-40	270	85	110	30	4		76.2		M24		
SC-50	270	85	110	30	4		76.2		M24		
SC-63	270	110	110	30	4		76.2		M24		
SC-79	270	110	110	30	4		76.2		M24		

強力生爪

SOFT JAWS FOR SCROLL CHUCK

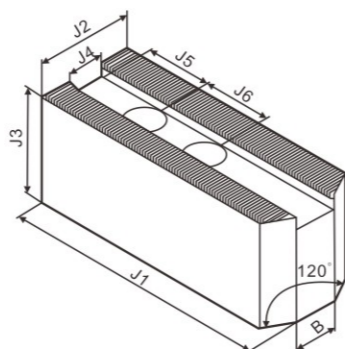


規格 / Specification

SPEC. MODEL	長 Length A	寬 Width B	高 Height C	D	鍵槽寬 Slot width E	鍵槽深 Slot depth F	螺絲 Screw G	H	J	K	L	M	N	毛重 G.W.(KG)
CP-04	52	19	30	24	9.53	7.94	M6x1.0P	14	11	3	2.5	21	7	0.45
CP-05	62	24	35	32	12.68	7.94	M8x1.25P	15	14	3.5	3	24	9	0.9
CP-06	73	26	37	38.1	12.68	7.94	M8x1.25P	17	14	3.5	3	25	9	1.2
CP-07(08)	95	31	48	44.45	12.68	7.94	M10x1.5P	25.3	17	3.8	3	34	11	2.65
CP-09(10)	110	37	48	53.98	19.03	12.7	M12x1.75P	28	19	4.2	3	34	13	3.8
CP-12	125	42	54	63.5	19.03	12.7	M12x1.75P	31	19	4.2	3	38	13	5.3
CP-16	160	50	70	76.2	19.03	12.7	M16x2.0P	42	25	5.5	6	48	17	11.5
CP-20	160	55	80	76.2	19.03	12.7	M20x2.5P	42	32	5.5	6	58	21	15.5
HE-2486	155	59	86	76.2	19.03	12.7	M20		32	5	6	66	21	17.2

SC06 加高油壓軟爪(生爪)

SC06 EXTRA HEIGHT SOFT JAWS

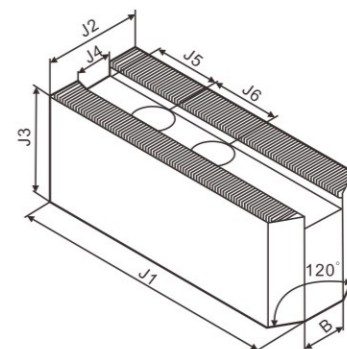


齒距: 1.5mmx60° Serration Pitch: 1.5mmx60° 單位/UNIT:mm

型號 Model	重量/Weight kg/set	螺孔 Screw	尺寸/Size (mm)						
			J1	J2	J3	J4	J5	J6	B
SC06H50	2	M10	73	31	50	12	15	20	14
SC06H60	2.6				60				
SC06H70	3				70				
SC06H80	3.4				80				
SC06H90	3.8				90				
SC06H100	4.2				100				
SC06H110	4.6				110				
SC06H120	5.0				120				
SC06H130	5.5				130				
SC06H140	6.0				140				
SC06H150	6.5		150						
SC06H160	7.0		160						
SC06H170	7.5		170						
SC06H180	8.0		180						
SC06H190	8.5		190						
SC06H200	9.0		200						

SC08 加高油壓軟爪(生爪)

SC08 EXTRA HEIGHT SOFT JAWS

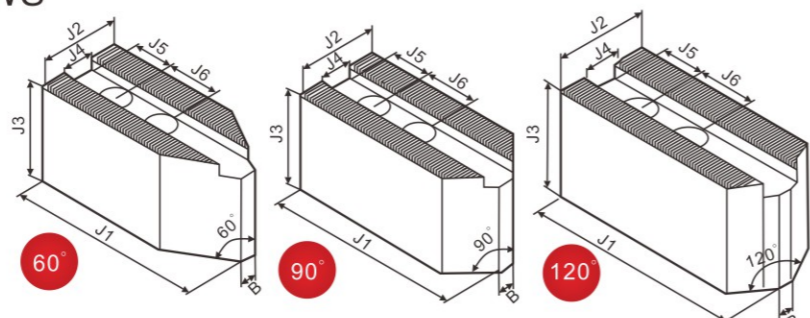
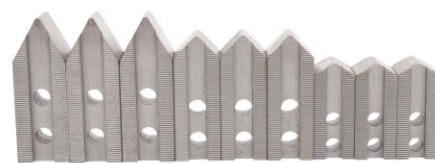


齒距: 1.5mmx60° Serration Pitch: 1.5mmx60° 單位/UNIT:mm

型號 Model	重量/Weight kg/set	螺孔 Screw	尺寸/Size (mm)						
			J1	J2	J3	J4	J5	J6	B
SC08H50	3.2	M12	95	35	50	14	24	25	16
SC08H60	3.8				60				
SC08H70	4.4				70				
SC08H80	5.1				80				
SC08H90	5.8				90				
SC08H100	6.4				100				
SC08H110	7.0				110				
SC08H120	7.6				120				
SC08H130	8.2				130				
SC08H140	8.8				140				
SC08H150	9.4		150						
SC08H160	10.1		160						
SC08H170	11.7		170						
SC08H180	11.4		180						
SC08H190	12		190						
SC08H200	12.6		200						

SC06 尖角油壓軟爪(生爪)

SC06 POINTED SOFT JAWS



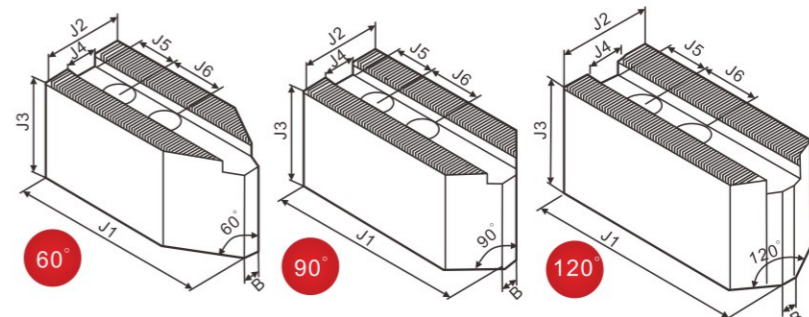
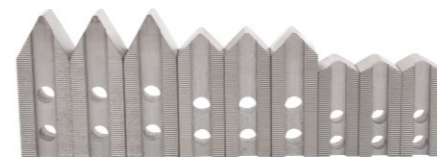
齒距: 1.5mmx60° Serration Pitch: 1.5mmx60° 單位/UNIT:mm

型號 Model	重量/Weight kg/set	螺孔 Screw	尺寸/Size (mm)						
			J1	J2	J3	J4	J5	J6	B
SC06H36P	1.5	M10	73	31	36	12	10	20	3
SC06H50P	2				50				
SC06H60P	2.5				60				
SC06H70P	2.9				70				
SC06H80P	3.3				80				
SC06H90P	3.7				90				
SC06H100P	4				100				
SC06H110P	4.4				110				
SC06H120P	4.8				120				
SC06H130P	5.3				130				
SC06H140P	5.8				140				
SC06H150P	6.2				150				
SC06H160P	6.6				160				

注: 尖角油壓軟爪有60°、90°、120°可供選擇; 非標可定做。
Option for pointed soft jaws: 60/90/120 angle degree or other special requirements; Customized spec can be made.

SC08 尖角油壓軟爪(生爪)

SC08 POINTED SOFT JAWS



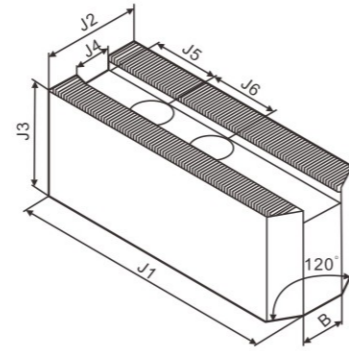
齒距: 1.5mmx60° Serration Pitch: 1.5mmx60° 單位/UNIT:mm

型號 Model	重量/Weight kg/set	螺孔 Screw	尺寸/Size (mm)						
			J1	J2	J3	J4	J5	J6	B
SC08H38P	2.5	M12	95	35	38	14	15	25	3
SC08H50P	3.2				50				
SC08H60P	3.8				60				
SC08H70P	4.4				70				
SC08H80P	5.1				80				
SC08H90P	5.8				90				
SC08H100P	6.4				100				

注: 尖角油壓軟爪有60°、90°、120°可供選擇; 非標可定做。
Option for pointed soft jaws: 60/90/120 angle degree or other special requirements; Customized spec can be made.

SC10加高油壓軟爪(生爪)

SC10 EXTRA HEIGHT SOFT JAWS



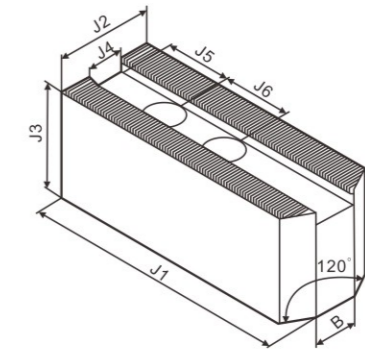
齒距: 1.5mmx60° Serration Pitch: 1.5mmx60° 單位/UNIT:mm

型號 Model	重量/Weight kg/set	螺孔 Screw	尺寸/Size (mm)						
			J1	J2	J3	J4	J5	J6	B
SC10H50	4.2	M12	110	40	50	16	30	30	18
SC10H60	5.3				60				
SC10H70	6.1				70				
SC10H80	7.1				80				
SC10H90	8				90				
SC10H100	8.8				100				
SC10H110	9.5				110				
SC10H120	10.5				120				
SC10H130	11.1				130				
SC10H140	12.2				140				
SC10H150	13.0				150				
SC10H160	14.0				160				
SC10H170	14.8				170				
SC10H180	15.8				180				
SC10H190	16.6				190				
SC10H200	17.5				200				

SC12加高油壓軟爪(生爪)

SC12 EXTRA HEIGHT SOFT JAWS

FOR NON THROUGH CHUCK

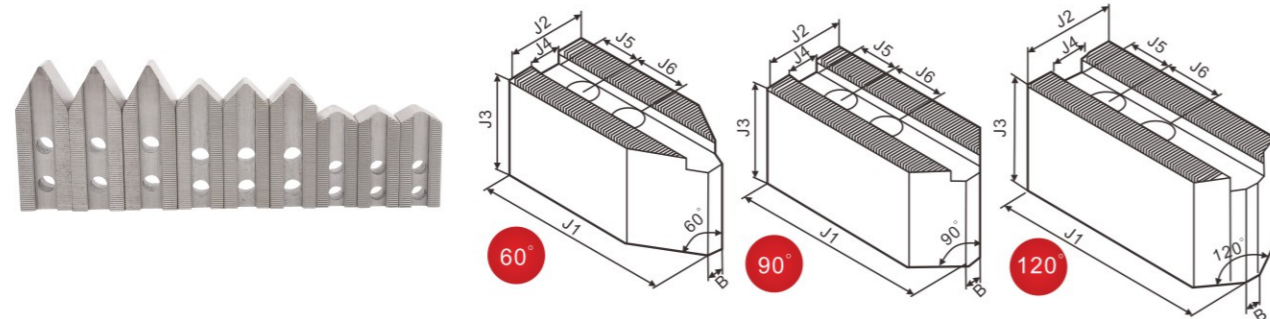


齒距: 1.5mmx60° Serration Pitch: 1.5mmx60° 單位/UNIT:mm

型號 Model	重量/Weight kg/set	螺孔 Screw	尺寸/Size (mm)						
			J1	J2	J3	J4	J5	J6	B
SC12H60N	7.8	M14	129	50	60	18	39	30	20
SC12H70N	9.1				70				
SC12H80N	10.5				80				
SC12H90N	11.6				90				
SC12H100N	12.9				100				
SC12H110N	14.2				110				
SC12H120N	15.6				120				
SC12H130N	17.0				130				

SC10尖角油壓軟爪(生爪)

SC10 POINTED SOFT JAWS



齒距: 1.5mmx60° Serration Pitch: 1.5mmx60° 單位/UNIT:mm

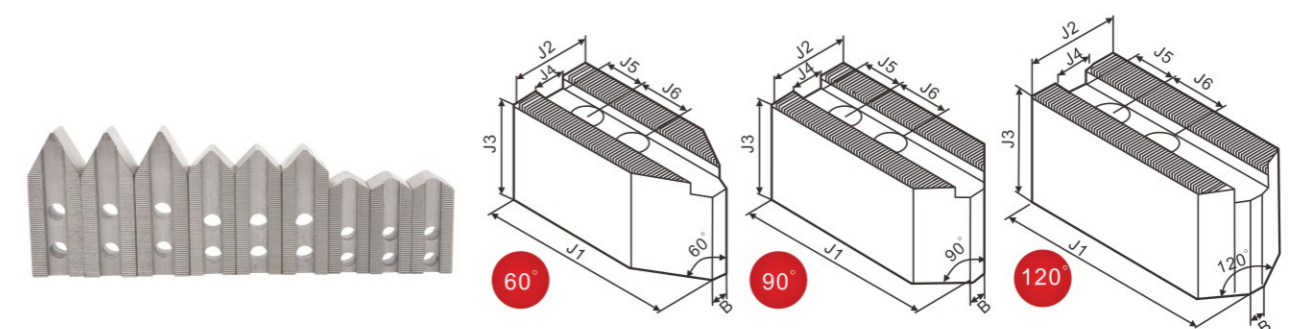
型號 Model	重量/Weight kg/set	螺孔 Screw	尺寸/Size (mm)						
			J1	J2	J3	J4	J5	J6	B
SC10H42P	3.7	M12	110	40	42	16	20	30	3
SC10H50P	4.2				50				
SC10H60P	5.1				60				
SC10H70P	6.1				70				
SC10H80P	6.9				80				
SC10H90P	7.7				90				
SC10H100P	8.5				100				

注: 尖角油壓軟爪有60°、90°、120°可供選擇; 非標可定做。
Option for pointed soft jaws: 60/90/120 angle degree or other special requirements; Customized spec can be made.

SC12尖角油壓軟爪(生爪)

SC12 POINTED SOFT JAWS

FOR NON THROUGH CHUCK



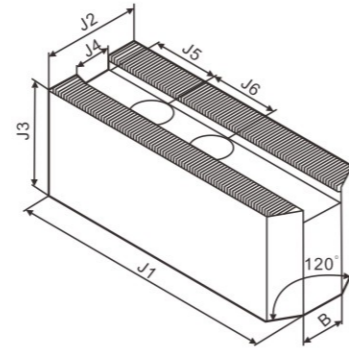
齒距: 1.5mmx60° Serration Pitch: 1.5mmx60° 單位/UNIT:mm

型號 Model	重量/Weight kg/set	螺孔 Screw	尺寸/Size (mm)						
			J1	J2	J3	J4	J5	J6	B
SC12H50PN	6.3	M14	129	50	50	18	25	30	6
SC12H60PN	7.5				60				
SC12H70PN	8.8				70				
SC12H80PN	10.1				80				
SC12H90PN	11.5				90				

注: 尖角油壓軟爪有60°、90°、120°可供選擇; 非標可定做。
Option for pointed soft jaws: 60/90/120 angle degree or other special requirements; Customized spec can be made.

SC12加高油壓軟爪(生爪) SC12 EXTRA HEIGHT SOFT JAWS

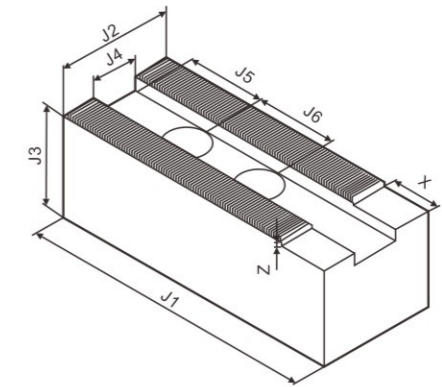
FOR THROUGH HOLE CHUCK



齒距: 1.5mmx60° Serration Pitch: 1.5mmx60° 單位/UNIT:mm

型號 Model	重量/Weight kg/set	螺孔 Screw	尺寸/Size (mm)						
			J1	J2	J3	J4	J5	J6	B
SC12H60	7.5	M16	129	50	60	21	39	30	23
SC12H70	8.7				70				
SC12H80	10				80				
SC12H90	11.2				90				
SC12H100	12.5				100				
SC12H110	13.8				110				
SC12H120	15.2				120				
SC12H130	16.5				130				

SC15加高油壓軟爪(生爪) SC15 EXTRA HEIGHT SOFT JAWS



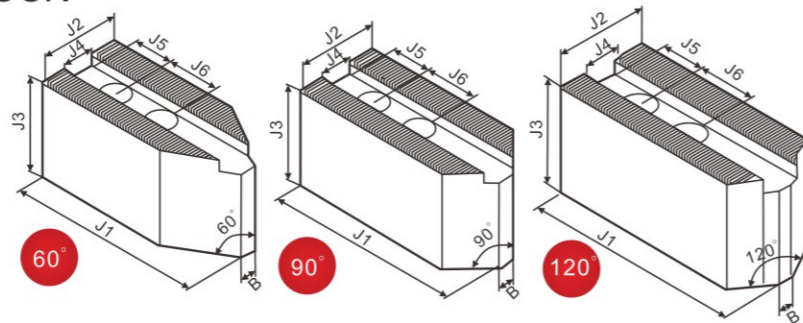
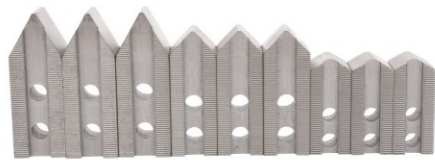
齒距: 1.5mmx60° Serration Pitch: 1.5mmx60° 單位/UNIT:mm

型號 Model	重量/Weight kg/set	螺孔 Screw	尺寸/Size (mm)							
			J1	J2	J3	J4	J5	J6	X	Z
SC15H80	16.1	M20	165	62	80	22 (22.5)	37	43	25	2
SC15H90	18.2				90					
SC15H100	20				100					
SC15H110	22.3				110					
SC15H120	25.0				120					
SC15H130	26.8				130					
SC15H140	28.5				140					
SC15H150	30				150					

注: 非標可定做。

SC12尖角油壓軟爪(生爪) SC12 POINTED SOFT JAWS

FOR THROUGH HOLE CHUCK



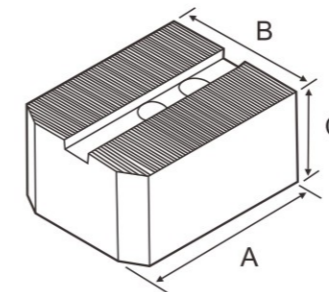
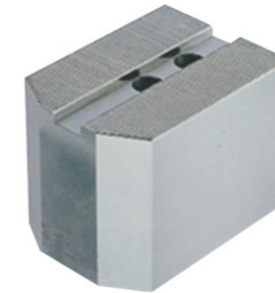
齒距: 1.5mmx60° Serration Pitch: 1.5mmx60° 單位/UNIT:mm

型號 Model	重量/Weight kg/set	螺孔 Screw	尺寸/Size (mm)						
			J1	J2	J3	J4	J5	J6	B
SC12H50P	6.0	M16	129	50	50	21	25	30	6
SC12H60P	7.2				60				
SC12H70P	8.4				70				
SC12H80P	9.5				80				
SC12H90P	11.0				90				

注: 尖角油壓軟爪有60°、90°、120°可供選擇; 非標可定做。
Option for pointed soft jaws: 60/90/120 angle degree or other special requirements; Customized spec can be made.

加寬軟爪

EXTRA-WIDTH SOFT JAWS



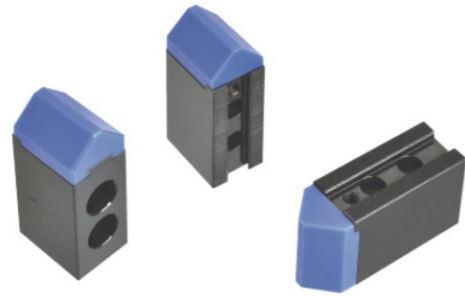
型號/規格 Model/Spec	長 Length A	寬 Weight B	高 Height C	齒距 Serration
SC0603048	73	48	30	1.5°60°
SC0603060	73	60	30	1.5°60°
SC0603080	73	80	30	1.5°60°
SC0604848	73	48	48	1.5°60°
SC0604863	73	63	48	1.5°60°
SC0606060	73	60	60	1.5°60°
SC0803648	95	48	36	1.5°60°
SC0803663	95	63	36	1.5°60°
SC0803680	95	80	36	1.5°60°
SC0804848	95	48	48	1.5°60°
SC0804873	95	73	48	1.5°60°
SC0804890	95	90	48	1.5°60°
SC0806363	95	63	63	1.5°60°
SC0807373	95	73	73	1.5°60°
SC0808383	95	83	83	1.5°60°
SC1004263	110	63	42	1.5°60°
SC10042100	110	100	42	1.5°60°
SC1004873	110	73	48	1.5°60°
SC1006363	110	63	63	1.5°60°
SC1007373	110	73	73	1.5°60°
SC1008383	110	83	83	1.5°60°

前端嵌入式塑鋼軟爪

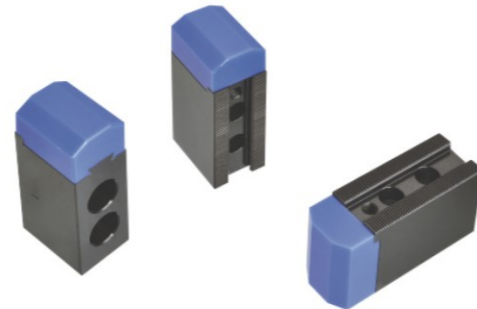
POM HEAD SOFT JAWS FOR HYDRAULIC CHUCK

◎ 襯頭與油壓生爪採嵌入式緊配結合，多面拘束，可提升夾持工件的穩定性及保護工件表面。
(此襯頭採固定式緊配結合，不做替換)

The POM/MC head is tight fit with steel parts, can't be changed, it can improve the gripping stability and protect the work piece surface.



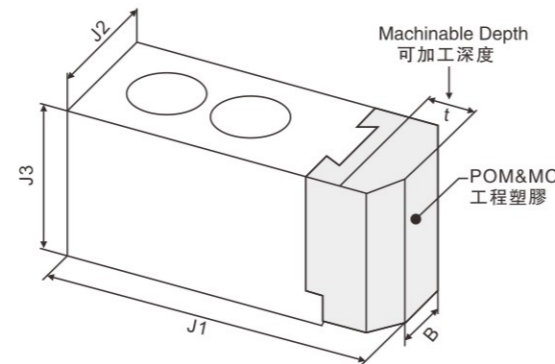
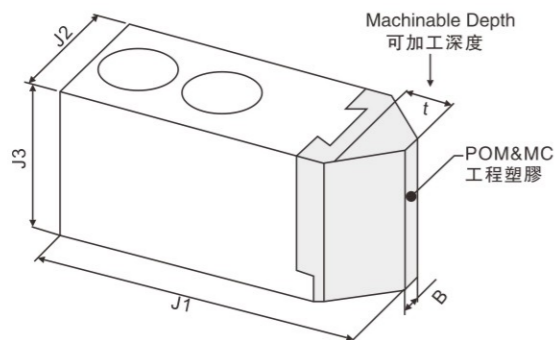
▶ 尖型軟質油壓生爪 Pointed Type



▶ 標準軟質油壓生爪 Standard Type

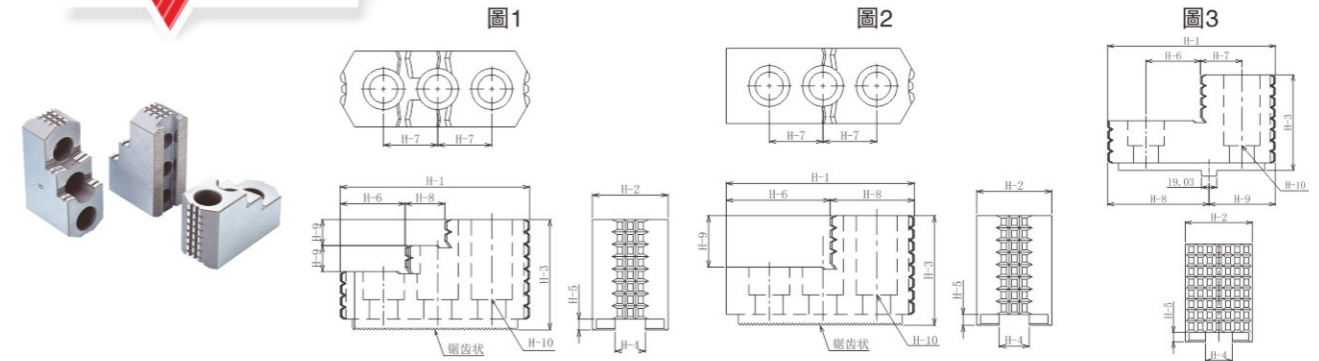
規格/型號 Model	尺寸/Size (mm)					角度 Angle	材質 Material	
	J1	J2	J3	B	t		MC尼龍/Nylon	POM塑鋼
6"H50	73	31	50	14	11	120	V	V
6"H50 尖型/pointed	73	31	50	5	11	90	V	V
8"H50	95	35	50	16	16	120	V	V
8"H50 尖型/pointed	95	35	50	5	16	90	V	V
10"H50	110	40	50	18	16	120	V	V
10"H50 尖型/pointed	110	40	50	5	16	90	V	V

注 (Remarks): 1. 需訂做
it's made for customized order
2. 軟質的材質可分為 1. MC尼龍(藍色) 2. POM塑鋼(白色)
The available material is MC nylon (Blue) and POM (white)



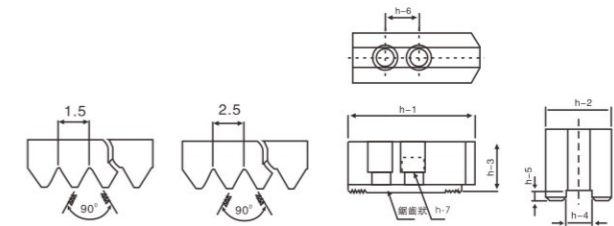
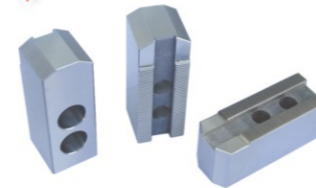
油壓硬爪

HARD JAWS FOR HYDRAULIC CHUCK



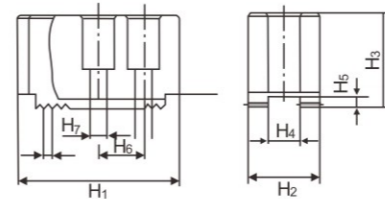
SPEC. MODEL	H-1	H-2	H-3	H-4	H-5	H-6	H-7	H-8	H-9	H-10	Serration Pitch	Gross Weight(kg)	參考圖 Ref
HJ-05	53	23	28	10	4	30.5	14	22.5	10	M8	1.5×60°	0.4	圖2
HJ-06	67	31	36	12	5	39	20	28	12	M10	1.5×60°	0.95	Fig2
HJ-08	86	35	51	14	5	31	25	18	12	M12	1.5×60°	1.95	圖1
HJ-10	100	40	54	16	5	43	30	17	14	M12	1.5×60°	2.85	Fig1
HJ-12	103	50	52	21(18)	5	69.5	30	43.5	20	M16(M14)	1.5×60°	3.9	圖1
HJ-15(18)	149	62	86	22(25.5)	(5)8	55	43	38	20	M20	1.5×60°	9.45	Fig1
HJ-15-1	149	62	86	26	8	55	43	38	20	M20	3.0×60°	9.45	
HJ-24(21)	159.5	80	90	25	9	104.5	50	55	40	M20	3.0×60°	14.3	圖2
HJ-32	159.5	80	90	25	9	104.5	50	55	40	M20	3.0×60°	14.3	Fig2
HJ-40(50)	223	85	117	30	7	72.6	38.1	140	83	M24	-	-	圖3
HJ-63(79)	223	110	117	30	7	72.6	38.1	140	83	M24	-	-	Fig3

K51卡盤軟爪



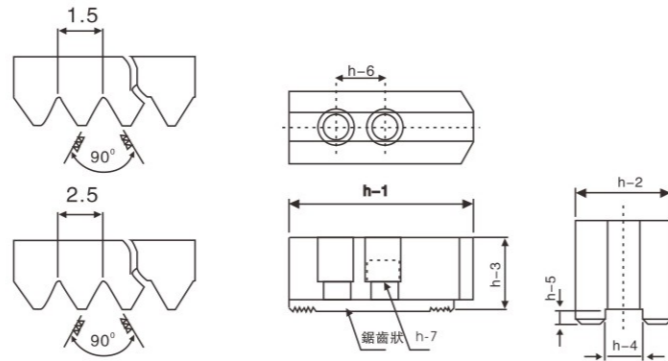
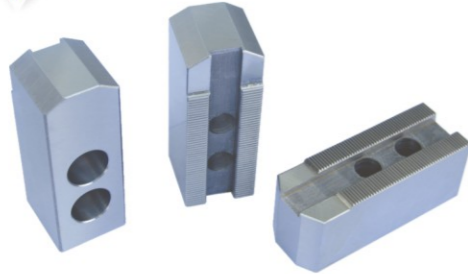
規格/尺寸 SPEC/SIZE	長 Length h-1	寬 Width h-2	高 Height h-3	鍵槽寬 Slot width h-4	鍵槽深 Slot depth h-5	中心孔距 Hole center distance h-6	螺絲 Screw h-7	齒距裝飾距 Serration pitch
CH-06(160)	62	35	38	11	4.5	20	M8	1.5×90°
CH-08(200)	80	40	45	13	4.5	24	M10	1.5×90°
CH-10(250)	100	45	52	15	4.5	28	M12	1.5×90°
CH-12(320)	115	50	62	18	4.5	32	M14	2.5×90°
CH-15(400)	140	50	75	20	6	45	M16	2.5×90°
CH-20(500)	160	55	85	22	6	50	M18	2.5×90°
CH-24(630)	190	60	100	26	6	55	M21	2.5×90°

CT卡盤軟爪



規格D size	H ₁	H ₂	H ₃	H ₄	H ₅	齒距裝飾距 Serration pitch	H ₆	H ₇
200	85	40	45	16	4	1/16"×90°	24	2-13
320	118	50	62	21	4	3/32"×90°	32	2-17
400	140	50	75	22	5.5	3/32"×90°	45	2-17
500	160	75	75	26	5.5	3/32"×90°	38	2-22
630	160	75	75	26	5.5	3/32"×90°	38	2-22
800	160	75	75	26	5.5	3/32"×90°	38	2-22
1000	200	85	110	30	9		100	2-26
1250	200	85	110	30	9		100	2-26

K52卡盤軟爪



規格/尺寸 MODELS/DIMENSION	長 Length h-1	寬 Width h-2	高 Height h-3	鍵槽寬 Slot width h-4	鍵槽深 Slot depth h-5	中心孔距 Hole center distance h-6	螺絲 Screw h-7	齒距裝飾距 Serration pitch
CH-125	56	25	32	11	3.5	16	M8	1.5×90°
CH-160	70	35	42	13	4	20	M10	1.5×90°
CH-200	82	40	46	16	4	24	M12	1.5×90°
CH-250	95	45	50	17	4	28	M12	1.5×90°
CH-315	118	50	62	21	4	32	M16	2.5×90°
CH-400	148	55	72	22	5	45	M16	2.5×90°

三爪自定心卡盤卡爪

HARD JAWS FOR SCROLL CHUCK

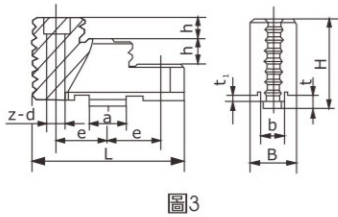
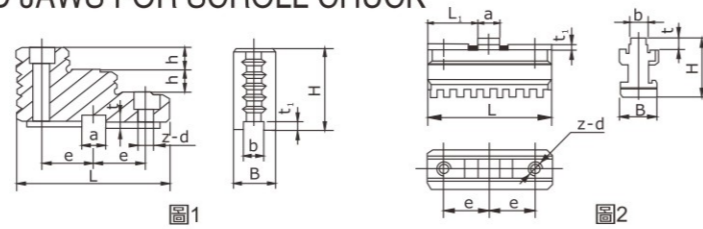


圖3

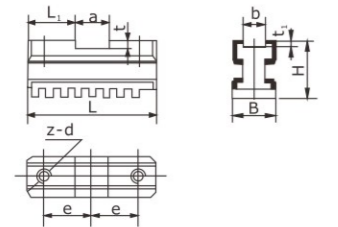


圖4

C型分離爪Two-Piece Jaws for Form C

規格 Size	L	B	H	h	a	b	e	t	t ₁	z-d	參考圖
200	88	22	44	12	13	11	28	7	3	2-9	圖1
240	108	27	46	12	13	13	35	7	3	2-11	圖1
250	108	27	46	12	13	13	35	7	3	2-11	圖1
規格 Size	L	L1	B	H	a	b	e	t	t ₁	Z-d	參考圖
200	76	31.5	22	36	13	11	28	6	2	2-M8	圖2
240	95	41	27	39	13	13	35	6	2	2-M10	圖2
250	95	41	27	39	13	13	35	6	2	2-M10	圖2
規格 Size	L	B	H	h	a	b	e	t	t ₁	z-d	參考圖
320	127	36	59.5	17	28	15	44	7.5	2.8	2-13	圖3
325	127	36	59.5	17	28	15	44	7.5	2.8	2-13	圖3
380	127	36	59.5	17	28	15	44	7.5	2.8	2-13	圖3
規格 Size	L	L1	B	H	a	b	e	t	t ₁	z-d	參考圖
320	114	43	36	40	28	15	44	8.5	3.5	2-M12	圖4
325	114	43	36	40	28	15	44	8.5	3.5	2-M12	圖4
380	114	43	36	40	28	15	44	8.5	3.5	2-M12	圖4

※包括頂爪和基爪 The jaws are composed of top jaws and master jaws.

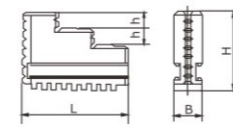
三爪自定心卡盤卡爪

HARD JAWS FOR SCROLL CHUCK



- ◎卡爪分為：整體爪，A型、D型分離爪，C型分離爪。
- ◎可按用戶要求 提供各型硬卡爪。
- ◎Hard jaws include one-piece jaws and two-piece jaws for form A, D, C.
- ◎ All kinds of hard jaws can be provided as the request of customers.

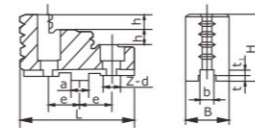
整體爪One-Piece Jaws



規格 Size	80	100	125	130	160	165	190	200	240	250	315 320 325 380
L	32	42	56	56	70	70	72	85	105	105	130
B	12	15	16	16	18.5	18.5	22	22	27	27	36
H	33	38	45	45	54	54	57	61	69	69	91
h	6.5	7	9	9	12	12	12	12	12	12	18

- ◎包括正爪、反爪各一副
- ◎ The chuck with one-piece jaws is provided with each set of internal and external ones.

A型、D型分離爪Two-Piece Jaws for Form A, D



規格 Size	160	200	250	315	325	380	400	500	630
L	67	80	95	108	108 130	130	130	132	132
B	25	30	36	45	45	45	45	45	54
H	41	45	53	61	61 70	70	70	82	82
h	9	10.5	13.5	17.5	17.5 17	17	17	22	22
a	12.675	12.675	19.025	19.025	19.025	19.025	19.025	19.025	19.025
b	7.94	7.94	12.7	12.7	12.7	12.7	12.7	12.7	12.7
e	19	22.2	27	31.75	31.75 38.1	38.1	38.1	38.1	38.1
t	3	3	3	3	3 6	6	6	6	6
t ₁	4	4	4	4	4	4	4	4	4
z-d	2-11	2-11	2-13	2-13	2-13 2-18	2-18	2-18	2-22	2-22

規格 Size	160	200	250	315	325	380	400	500	630
L	64	80	98	110	110 114	114	114	152	210
L1	29	34.9	39.7	47.6	47.6 47.5	47.5	47.5	47.4	59
B	20	22	27	36	36	36	36	45	50
H	33	35	38	42	42 46	46	46	55	60
a	12.675	12.675	19.025	19.025	19.025	19.025	19.025	19.025	19.025
b	7.94	7.94	12.7	12.7	12.7	12.7	12.7	12.7	12.7
e	19	22.2	27	31.75	31.75 38.1	38.1	38.1	38.1	38.1
t	4	4.2	4.2	4.2	4.2 7	7	7	7	7
t ₁	3	3	3	3	3	3	3	3	3
z-d	2-M10	2-M10	2-M12	3-M12	3-M12 3-M16	3-M16	3-M16	4-M20	5-M20

- ◎包括頂爪和基爪兩部分。規格 為325、380的A型分離爪和所有規格的D型分離爪，基爪不帶夾 持弧。
- ◎ The jaws are composed of top jaws and master jaws. Master jaws for form A size 325, 380 and form D without clamping arc.

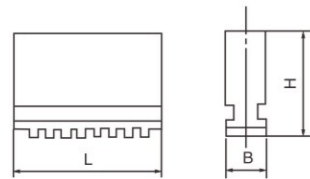
RZ軟卡爪



- ◎ K11、K10、K12系列卡盤可按用戶要求提供各種軟卡爪。
- ◎ 軟卡爪包括：整體軟爪和分離軟爪（C型、A型）。

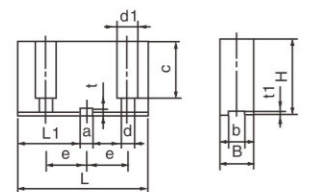
- ◎ All kinds of soft jaws can be provided as the request of customers for K11,K10,K12 series chucks.
- ◎ Soft jaws include one-piece soft jaws and two-piece soft jaws(form C,A).

整體軟爪 One-piece soft jaws

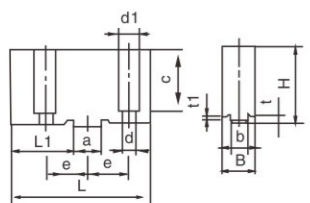


整號規格 Model	RZ1180	RZ11100	RZ11125	RZ11130	RZ11160	RZ11165	RZ11190	RZ11200	RZ11240	RZ11250	RZ11315 RZ11320	RZ11325 RZ11380
L	32	42	56	56	70	70	72	85	105	105	130	130
B	12	15	16	16	18.5	18.5	22	22	27	27	36	36
H	32	38	45	45	54	54	57	61	69	69	91	91

軟頂爪（C型） Soft top jaws(Type C)

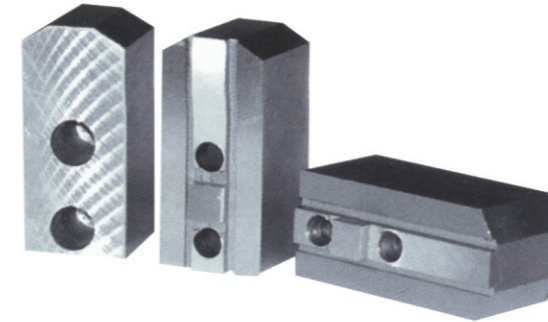


整號規格 Model	L	L1	B	H	a	b	e	t	t1	c	d	d1
RZ11200C	93	46	25	50	13	11	28	7	3	39	9	15
RZ11240C	113	58	27	58	13	13	35	7	3	48	11	17
RZ11250C	113	58	27	58	13	13	35	7	3	48	11	17



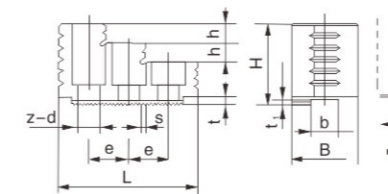
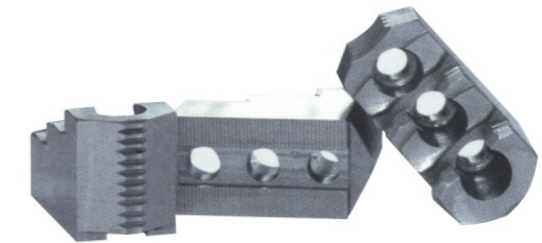
整號規格 Model	L	L1	B	H	a	b	e	t	t1	c	d	d1
RZ11320C	137	64	36	75	28	15	44	7.5	2.8	60.5	13	20
RZ11325C	137	64	36	75	28	15	44	7.5	2.8	60.5	13	20
RZ11380C	137	64	36	75	28	15	44	7.5	2.8	60.5	13	20

K52,K54,K55系列卡盤卡爪



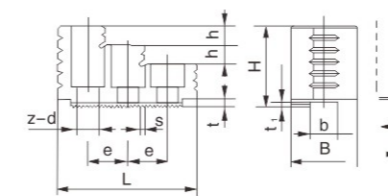
- ◎ Form A: Matched with hard top jaws with serrations.
- ◎ Form B: Matched with soft top jaws with cross tenon.

- ◎ A型：卡盤配帶梳齒型硬卡爪。
- ◎ B型：卡盤配帶十字鍵型軟卡爪。



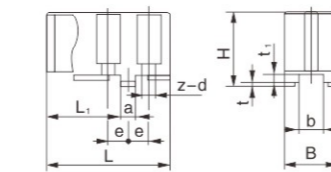
K52A

規格D Size	L	B	H	b	e	t	t ₁	s	h	z-d
160	70	35	42	13	20	4.5	4	1.5×90°	10	3-11
200	82	40	48	16	24	4.5	4	1.5×90°	11	3-13
250	95	45	50	17	28	4.5	4	1.5×90°	12	3-13
315	114	50	62	21	32	4.5	4		15	3-17
400	148	55	72	22	45	5.5	5		18	3-17



K54A、K55A、K55A-IV

規格D Size	L	B	H	b	e	t	t ₁	s	h	z-d
125	56	23	32	11	16	4	3.5	1.5×90°	7.5	3-9
160	68	30	42	13	20	4.5	4	1.5×90°	10	3-11
200	84	36	48	16	24	4.5	4	1.5×90°	11	3-13
250	90	40	50	17	28	4.5	4	1.5×90°	12	3-13
315	112	50	62	21	32	4.5	4		15	3-17

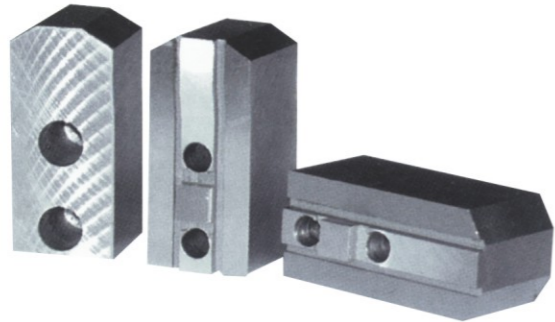


K52B、K55B

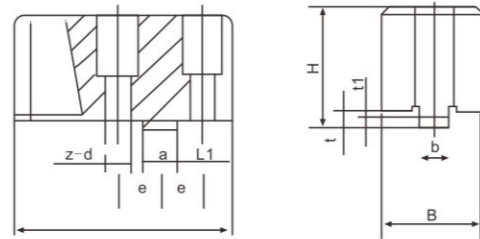
規格D Size	L	B	H	a	b	e	t	t ₁	L ₁	z-d
160	74	35	45	12	12	12.5	3	4	44	2-11
200	90	40	49	12	15	15	3	4	54.5	2-13
250	115	45	53	15	15	20	3	4	70.5	2-13
315	145	50	65	15	20	24	3	4	95	2-17
400	180	55	75	20	20	30	3	4	120	2-17

K51T, K51, K51F 楔式動力卡盤卡爪

WEDGE TYPE POWER CHUCK JAWS



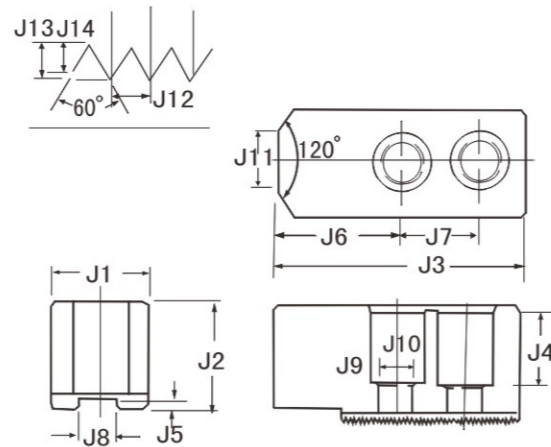
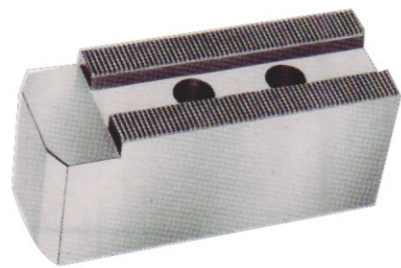
- ◎ 夾持弧面按工件要求可隨機配車或配磨。
- ◎ 連接剛性强，夾持精度高。
- ◎ 夾持直徑的調整主要靠更換卡爪實現，尤其適用於加工大批量零件。



規格 Spec	L	L1	B	H	a	b	e	t	t1	z-d	淨重KG Net WT
160	70	18	35	42	11	11	14	5	1.5	2-9	11
200	86	20	40	50	13	13	16	6	2	2-11	20
250	105	25	45	58	15	15	20	7	2.5	2-13	31
320	130	28	50	69	18	18	22.5	8	3	2-15	53
400	160	40	50	80	20	20	30	9	3.5	2-17	83
500	19	56	55	85	22	22	39	9	3.5	2-19	134
630	235	76	60	100	24	24	50	10	4	2-22	-

日系卡盤軟爪系列1

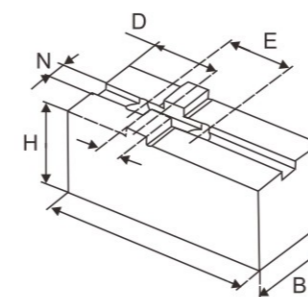
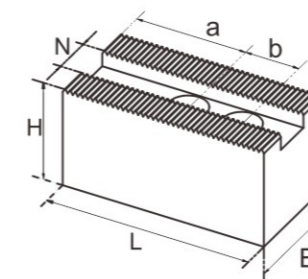
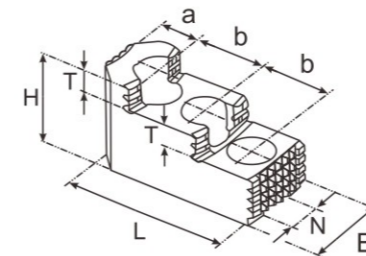
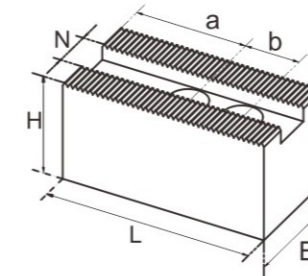
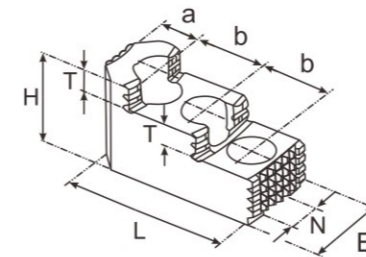
SOFT JAWS FOR JIS STANDARD



規格 Spec	J1	J2	J3	J4	J5	J6	J7	J8	J9	J10	J11	J12	J13	J14	螺絲 Screw
6	30	34	80	26	3.5	41	25	11	9	14	10	1.5	1.3	0.15	M8
8	36	40	90	27	3.5	45	25	14	13	17	20	1.5	1.3	0.15	M12
10	40	40	110	31	6	50	30	16	13	19	25	1.5	1.3	0.15	M12
12	50	50	130	33	6	60	30	18	15	23	30	1.5	1.3	0.15	M14
15	62	62	150	43	0.5	55	50	22	22	32	-	3.0	2.6	0.5	M20
18	62	62	150	43	8.5	55	50	22	22	32	-	3.0	2.6	0.5	M20

德系卡盤卡爪系列

JAWS FOR DIN SERIES CHUCK



Inch serrated hard top jaws "D"

If high concentricity is required jaws have to be ground on the chuck at clamping pressure

Id.No.*	Serration inch	B mm	H mm	L mm	N mm	T mm	a mm	b mm	Mass kg/jaw
12081306	1/16"x90°	30	34	58	12	8.5	13	16	0.2
12081636	1/16"x90°	34	39	65	14	10	18	16.5	0.3
12082036	1/16"x90°	40	45	82	17	10.5	19	23	0.57
12082626	1/16"x90°	45	56	100	17	15.5	23	30	0.85
12083036	1/16"x90°	45	56	105	21	13.5	26	30	0.95
12084006	1/16"x90°	55	73	120	21	22	30	34	1.70
12085046	3/32"x90°	55	73	145	25.5	32	46	38	2.2
12084546	3/32"x90°	60	75	140	25.5	19	38	38	2.5
12086346	3/32"x90°	70	75	145	25.5	32	46	38	3

Inch serrated soft blank top jaws "D"

Id.No.*	Serration inch	B mm	H mm	L mm	N mm	a mm	b mm	Mass kg/jaw
12071300	1/16"x90°	30	30	60	12	29	16	0.3
12071680	1/16"x90°	30	35	70	14	38	16.5	0.42
12072130	1/16"x90°	35	40	90	17	47	23	0.85
12072620	1/16"x90°	40	45	110	17	60	30	1.23
12072500	1/16"x90°	45	45	110	21	60	30	1.25
90072500	1/16"x90°	60	60	120	25.5	64	34	2.6
12073000	1/16"x90°	50	50	125	21	73	30	1.85
12074030	1/16"x90°	60	60	140	21	81	34	3.2
12074040	3/32"x90°	60	60	140	25.5	75	38	3.2
12075050	3/32"x90°	60	60	170	25.5	105	38	3.6
12075040	3/32"x90°	75	75	160	25.5	97	38	5.5
12075140	3/32"x90°	60	60	205	25.5	104	38	4.5

Metric serrated hard top jaws "M"

If high concentricity is required jaws have to be ground on the chuck at clamping pressure

Id.No.*	Serration mm	B mm	H mm	L mm	N mm	T mm	a mm	b mm	Mass kg/jaw
12081307	1.5x60°	30	34	58	12	8.5	13	16	0.2
12081627	1.5x60°	34	39	67	12	10	14	20	0.31
12082127	1.5x60°	40	45	86	14	10.5	19	25	0.60
12082627	1.5x60°	45	56	100	16	15.5	23	30	0.85
12083037	1.5x60°	45	56	105	21	13.5	26	30	0.95
12084007	1.5x60°	55	73	120	21	22	30	34	1.70
12084047	1.5x60°	55	73	145	25.5	32	46	38	2.2
12084527	1.5x60°	60	75	140	22	19	38	38	2.5

Metric serrated soft blank jaws "M"

Id.No.*	Serration inch	B mm	H mm	L mm	N mm	a mm	b mm	Mass kg/jaw
12071301	1.5x60°	30	30	60	12	29	16	0.3
12071621	1.5x60°	30	35	70	12	34	20	0.42
12072121	1.5x60°	35	40	90	14	47	25	0.85
12072621	1.5x60°	45	45	110	16	60	30	1.3
12073001	1.5x60°	50	50	125	21	73	30	1.85
12074021	1.5x60°	60	60	140	22	75	38	3.2
12074031	1.5x60°	60	60	140	21	81	34	3.2
12074041	1.5x60°	60	60	140	25.5	75	38	3.2

Tongue & groove soft blank top jaws "C"

American standard tongue & groove

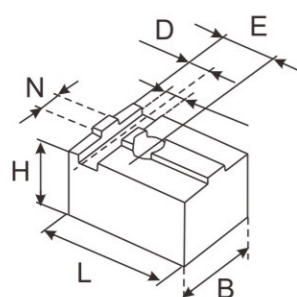
Id.No.*	B mm	H mm	L mm	N mm	D mm	E mm	I mm	Mass kg/jaw
12041660	30	35	80	7.94	30	38.1	12.68	0.58
12042060	40	40	100	7.94	35	44.4	12.68	0.92
12042560	50	50	120	12.70	42	54	19.03	1.25
12043060	50	50	140	12.70	50	63.5	19.03	2.15
12044050	60	60	165	12.70	60	76.2	19.03	3.6
12045050	75	75	165	12.70	60	76.2	19.03	5.5

德系卡盤T型塊系列

T-NUTS FOR DIN SERIES CHUCK

日系卡盤軟爪系列2 (S型)

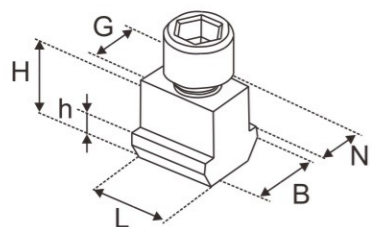
SOFT JAW FOR JIS STANDARD



Tongue & groove soft blank top jaws "C"

DIN standard tongue & groove
Fof CL-C chucks

Id.No.*	B mm	H mm	L mm	N mm	D mm	E mm	I mm	Mass kg/jaw
90040800	30	30	38	8	8	14	8	0.18
90041000	30	30	48	8	8	20	8	0.23
90041300	35	35	57	14	27	27	16	0.40
90041600	40	40	75	18	34	34	18	0.72

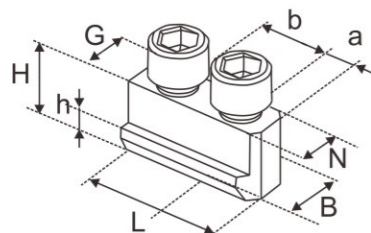


Single T-nut NST

Type 1

Id.No.*	B mm	H mm	L mm	N mm	G mm	H mm
12063000	29	25	24	21	M16	11
12064020	35	34.5	30	22*	M20	15
12065020	35	34	30	25.5*	M20	15
12065082	36	34	30	25.5*	M20	15
12065002	40	40	32	25.5*	M20	15.5

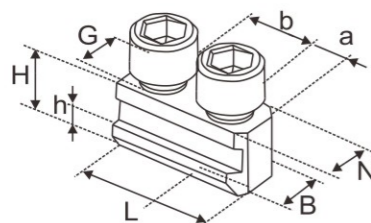
*22 mm guide in the top jaw and 25.5 mm guide in the master jaw
**25.5 mm guide in the top jaw and 28mm guide in the master jaw



Double T-nut NSTE

Type 2

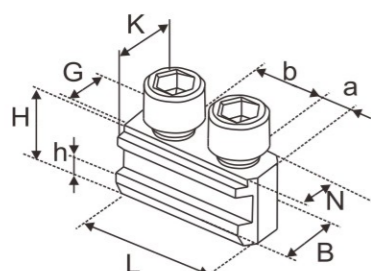
Id.No.*	B mm	H mm	L mm	N mm	G mm	a mm	b mm	h mm
12061300	17	15	30	12	M8	7	16	6.5
73064030	31	33	60	21	M16	13	34	14.5
12064520	31	33	70	22	M20	16	38	14.5



Double T-nut NSTE

Type 3

Id.No.*	B mm	H mm	L mm	N mm	G mm	a mm	b mm	h mm
12061200	15	15	32	12	M8	6.5	16	6.5
73061650	17	18.5	32	14	M10	8	16.5	6.5
73062150	19	20.5	43	17	M12	10	23	7.5
18062632	19	20.5	50	17	M12	10	30	7.5
73063050	25	26.5	56	21	M16	13	30	10
73065030	31	33	70	25.5	M20	16	38	14.5



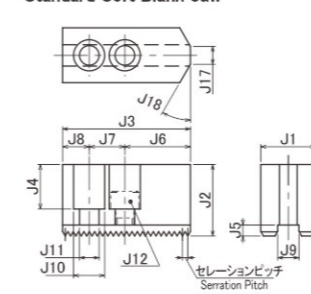
Double T-nut NSTE-M

Type 4

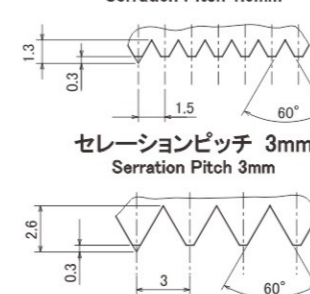
For metric serrated master jaws to use existing kitagawa top jaws

No. Id.No.*	B mm	H mm	L mm	N mm	K mm	G mm	a mm	b mm	h mm
73061602	17	18.5	36	12	14	M10	8	20	6.5
13062101	19	20.5	45	14	17	M12	10	25	7.5
18062633	19	20.5	50	16	17	M12	10	30	7.5
73062501	25	26.5	56	16	21	M12	13	30	10

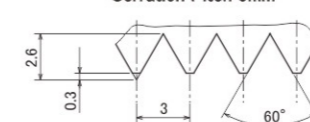
標準生爪
Standard Soft Blank Jaw



セレーションピッチ 1.5mm
Serration Pitch 1.5mm



セレーションピッチ 3mm
Serration Pitch 3mm



- Standard soft blank jaws are made of carbon steel, JIS S48C (SAE 1045 OR ISO C50 is equivalent to JIS S48C)
- When ordering jaws, specify chuck model number
- When ordering jaw nuts if needed.
- Specify the following information if special jaws are necessary

Shape of work piece	Size of work piece
Machining condition	Gripping position

Chuck series number	Serration Pitch	J1	J2	J3	J4	J5	J6	J7	J8	J9	J10	J11	J12	J16	J17	J18	質量kg (1個) Weight	
H01MA	4	1.5	25	25	54	14	5	30	14	10	10	13.5	9	M8	-	8	30°	0.2
H01MA	5	1.5	25	25	58.5	14	5	31.5	19	8	10	14	9	M8	-	-	-	0.2
H01MA	6	3.0	31	40	72	25	6	37	20	15	12	17.5	11	M10	-	-	-	0.6
H01MA	6S	1.5	31	40	70.5	26	5	35.5	20	15	12	17.5	11	M10	-	-	-	0.6
H01MA	8	3.0	34	40	90	22	6	45	25	14	20	13.5	M12	-	-	-	0.8	
H01MA	8S	1.5	34	40	90	23	5	45	25	20	14	20	13.5	M12	-	-	-	0.8
H01MA	10	3.0	40	40	111	22	6	51	30	30	16	20	13.5	M12	-	-	-	1.2
H01MA	10S	1.5	40	40	111	23	5	51	30	30	16	20	13.5	M12	-	-	-	1.2
H01MA	12	3.0	50	50	129	32	6	60	30	39	18	23	15.5	M14	-	-	-	2.2
H01MA	12S	1.5	50	50	129	33	5	60	30	39	18	23	15.5	M14	-	-	-	2.2
H01MA	15	3.0	65	70	156	50	8	72	50	34	26	32	22	M20	-	-	-	4.7
H01MA6	A5-J	1.5	31	40	70.5	26	5	35.5	20	15	12	17.5	11	M10	-	-	-	0.6
H022M	6	1.5	30	30	70.5	20	5	36	20	14.5	12	17.5	11	M10	-	-	-	0.4
H022M	8	1.5	35	40	90	26	5	45	25	20	16	20	13.5	M12	-	-	-	0.7
H022M	10	1.5	40	50	105	35	5	51	30	24	18	23	15.5	M14	-	-	-	1.3
H022M	12	3	50	60	126	42	6	60	40	26	21	26	17.5	M16	-	-	-	2.4
H027M	4	1.5	25	25	47.5	16	4	22	16	9.5	11	14	9	M8	-	4	30°	0.2
H027M	5	1.5	25	25	47.5	16	4	22	16	9.5	11	14	9	M8	-	4	30°	0.2
H037M	6	1.5	35	35	66	22	5	31.5	20	14.5	12	17.5	11	M10	-	-	-	0.6
H037M	8	1.5	40	40	85.5	26	5	40.5	25	20	16	20	13.5	M12	-	-	-	1.0
H037M	10	1.5	45	45	108	30	5	54	30	24	18	23	15.5	M14	-	-	-	1.5
H037M	12	1.5	50	60	111	42	5	51	35	25	21	26	17.5	M16	-	-	-	2.2
H032M	15	3	60	66	138	47	8	66	42	30	26	32	22	M20	-	-	-	3.9
H032M	6	1.5	28	30	60	21	4	30	16	14	11	14	9	M8	-	-	-	0.4
H032M	6	1.5	26	28	66	16	5	34	20	12	12	17.5	11	M10	54	5	30°	0.3
H032M	8	1.5	35	38	95	23	5	46	25	24	14	20	13.5	M12	75	12	30°	0.8
H3KT	10	1.5	40	42	110	27	5	50	30	30	16	20	13.5	M12	90	15	15°	1.2
H3KT	12	1.5	50	50	111	33	5	60	30	21	21	26	17.5	M16	-	-	-	1.8

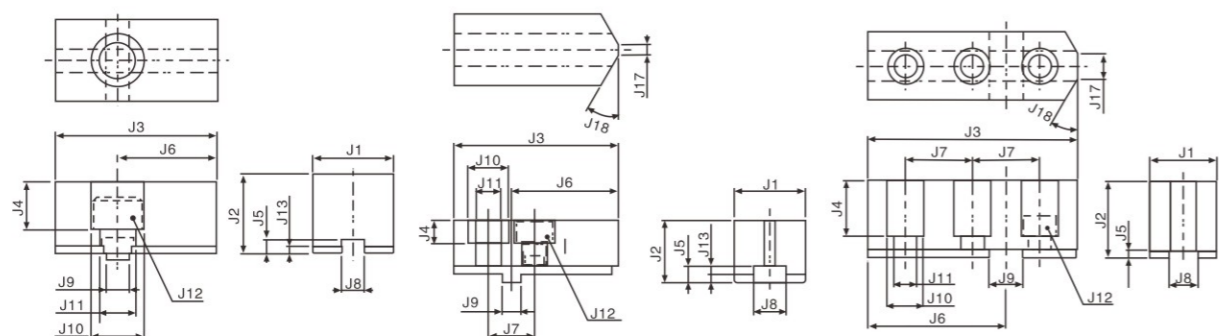
日系卡盤生爪共用表 COMPATIBILITY OF SOFT BLANK JAW

Chuck series number	Compatible chuck series number
H01MA	4 H022M5, H024M5, H012D4, H010D6, H010D8
H022M	6 H01MA18, H01MA21, H01MA24, H024M6, H024M8, H024D6, H05M6, H023M8, H023M10, H024M8, H024D8, H05M8, H023M12, H024M10, H024M12, H05M10, H023M15, H024M12
H037M	6 H032M8, H027M6, H012D6, H024D6, H034M6, H032M10, H027M8, H012D8, H024D8, H034M8, H032M12, H027M10, H012D10, H027M10, H034M10, H027M12, H034M12, H037M15, H047M15, H034M15

日系卡盤軟爪系列2 (C型)

SOFT JAWS FOR JIS STANDARD
(TONGUE AND GROOVE TYPE)

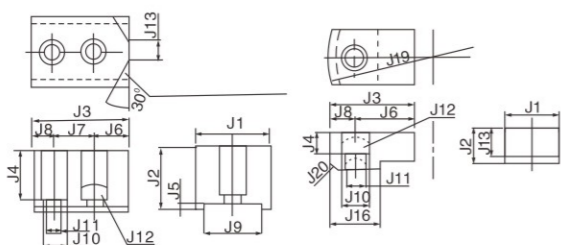
C1形 C1TYPE C2形 C2TYPE C3形 C3TYPE



Chuck series number	J1	J2	J3	J4	J5	J6	J7	J8	J9	J10	J11	J12	J13	J17	J18	質量kg (1個) Weight	爪形式 Jaw type	
H011MC	4	25	22	50	13	5.5	28	-	8	8	17.5	11	M10	2.5	-	0.2	C1	
H011MC	5	30	27	56	15	5.5	33	-	8	8	20	13.5	M12	2.5	-	0.3		
H011MC H014M	6	35	34	70	21	6	43	-	10	10	23	15.5	M14	3	-	0.5		
H011MC H021MB (H055M)	6	35	33.5	70	18	7	47	20	14	8	17.5	11	M10	3.5	8	30°	0.5	C2
H011MC H013M H014M H021MB (H055M)	6	35	33.5	70	18	7	47	20	14	8	17.5	11	M10	3.5	(2)	(45°)	0.5	
H011MC H013M H014M H021MB (H055M)	8	40	44.5	84	29	7	53	26	16	12	20	13.5	M12	3.5	(2)	(45°)	1.0	
H011MC H013M H014M H021MB (H055M)	10	50	49.5	100	32	7	62	32	18	15	23	15.5	M14	3.5	(2)	(45°)	1.6	
H011MC H013M H021MB (H055M)	12	60	54.5	120	36	7	78	36	20	17	26	17.5	M16	3.5	(2)	(60°)	2.4	C3
H018M	8	32	36	100	26	3.5	66	32	14	16	17.5	11	M10	-	12	30°	0.8	
H018M	10	35	43	110	33	3.5	72	34	16	16	20	13.5	M12	-	12	30°	1.1	
H018M	12	40	50	130	40	3.5	85	40	16	20	20	13.5	M12	-	12	30°	1.9	
H018M	15	40	50	160	40	3.5	107.5	55	16	25	20	13.5	M12	-	12	30°	2.3	

日系卡盤軟爪系列2

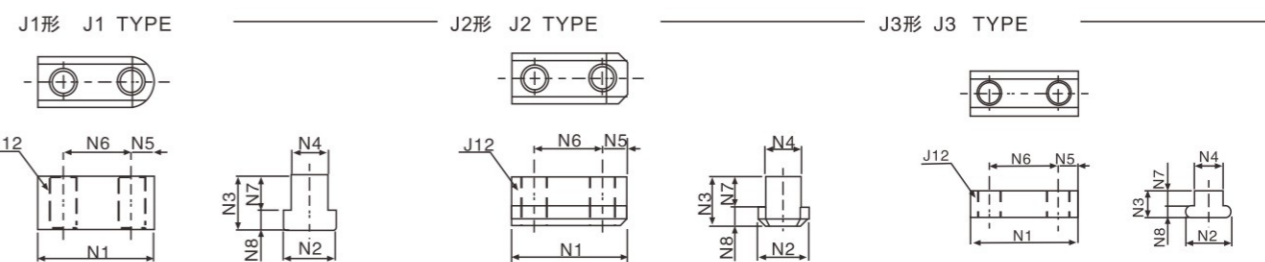
H063M/H064M/H3EF 型
SOFT JAWS FOR JIS STANDARD
(TYPE H063M/H064M.H3EF)



Chuck series number	J1	J2	J3	J4	J5	J6	J7	J8	J9	J10	J11	J12	J13	J16	J19	J20	質量kg Weight	
H063M	6	50	44	68	35	4	23.64	29.36	15	38.1	17.5	11	M10	14	-	-	1.0	
H064M	8	55	54	83	43.5	4	33.87	34.13	15	44.4	20	13.5	M12	18	-	-	1.6	
H064M	10	70	64	100	52.5	4	36.55	44.45	19	57.1	26	17.5	M16	40	-	-	2.9	
H064M	12	70	64	110	52.5	4	46.55	44.45	19	57.1	26	17.5	M16	70	-	-	3.2	
H3EF	6	32	22	47	12	-	32	-	15	-	17.5	11	M10	17	30	118	C5	0.2
H3EF	8	40	27	60	16	-	42	-	18	-	20	13.5	M12	22	35	150	C5	0.4

日系卡盤T型塊

T-NUT FOR JIS CHUCK SERIES



Chuck series number	N1	N2	N3	N4	N5	N6	N7	N8	J12	質量kg(1個) Weight	Jaw nut type
H01MA	4	25.5	15	16.5	10	5.5	14	11	5.5	M8	0.027
	5	30.5	15	16.5	10	5.5	19	11	5.5	M8	0.034
	6	37	17	21.5	12	8	20	14	7.5	M10	0.061
	8	46	20	23.5	14	10	25	15	8.5	M12	0.095
	10	51	23	23.5	16	10	30	15	8.5	M12	0.140
H037M	12	53	28	33	18	11	30	19	14	M14	0.262
	15	82	34	40	26	16	50	23	17	M20	0.560
	4	29	16	16.5	11	6.5	16	10	6.5	M8	0.036
	8	45	22	26.5	16	10	25	18	8.5	M12	0.120
H05M	10	52	24	27.5	18	11	30	18	9.5	M14	0.161
	12	60	27	29	21	12	35	18.5	10.5	M16	0.242
	15	74	34	40	26	16	42	23	17	M20	0.530
H3KT	12	65	27	29	21	12	40	18.5	10.5	M16	0.252
	6	36	17	18.5	12	8	20	11	7.5	M10	0.054
	8	46.5	20	20.5	14	10.5	25	12	8.5	M12	0.092
H063M	10	51	22.5	21.5	16	11	30	13	8.5	M12	0.126
	12	55.5	29.5	27.5	21	12	30	16	11.5	M16	0.211
H064M	6	46.8	20.00	11.0	12.5	8.7	29.36	6.1	4.9	M10	0.050
	8	53.3	22.25	13.3	14.1	9.6	34.13	7.5	5.8	M12	0.075
H064M	10.12	68.4	28.30	17.6	18.9	12.0	44.45	10.3	7.3	M16	0.160

日系卡盤T型塊共用表 COMPATIBILITY OF T-NUT

Chuck series number	H022M5		H024M5		H027M4		H027M5		H037M5		H032M6	
H01MA	4	H022M5		H024M5								H012D4
	6	H022M6	H023M8	H024M6	H027M6	H034M6	H047M6	H037M6	H05M6	H032M8		H012D6
	15	H01MA18	H01MA21	H01MA24								
H037M	4				H027M4	H027M5						H032M6
	8	H022M8	H023M10	H024M8	H027M8	H034M8	H047M8			H05M8	H032M10	H012D8
	10	H022M10	H023M12	H024M10	H027M10	H034M10	H047M10			H05M10	H032M12	H012D10
	12				H027M12	H034M12	H047M12					
	15				H027M15	H034M15	H047M15					
H05M	12	H022M12	H023M15	H024M12								

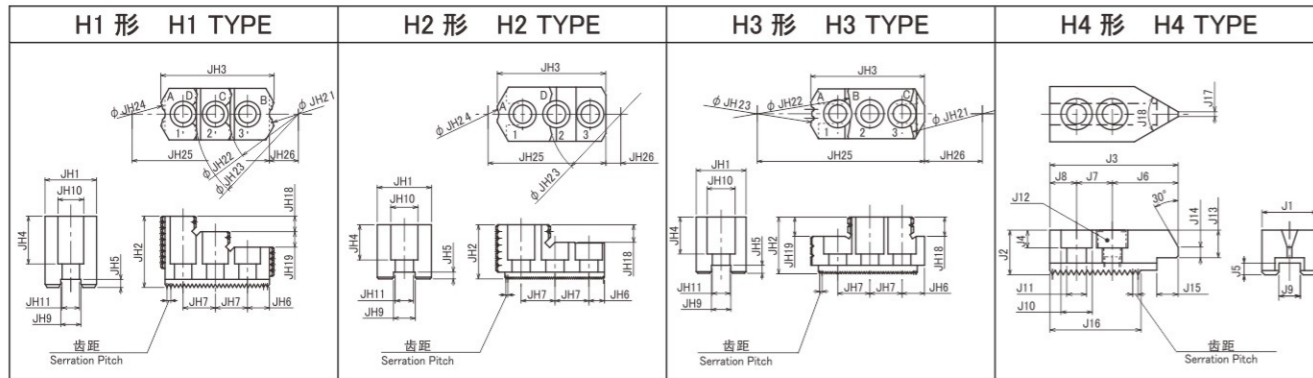
日系卡盤軟爪系列2 (S1型)

SOFT JAWS FOR JIS SERIES S1 TYPE

Chuck series number	Jaw number	Serration Pitch	J1※	J2※	J3※	J4※	J5	J6※	J7	J8※	J9	J10	J11	J12	質量kg(1個) Weight	
H01MA	6	401-062-0-000	3	40	55	87	40	6	51	20	16	12	17.5	11	M10	1.4
	8	401-062-1-000	3	40	60	102	42	6	57	25	20	14	20	13.5	M12	1.6
	10	401-062-2-000	3	50	70	123	52	6	63	30	30	16	20	13.5	M12	3
	12	401-062-3-000	3	62	80	144	63	6	75	30	39	18	23	15.5	M14	5

日系卡盤硬爪系列

HARD JAWS FOR JIS STANDARD



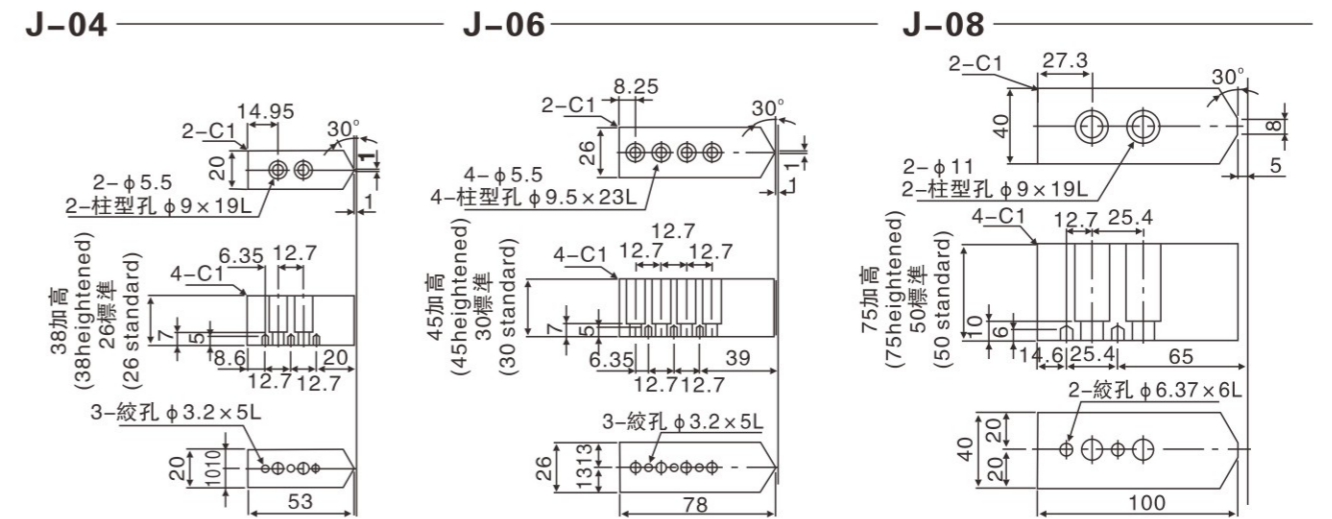
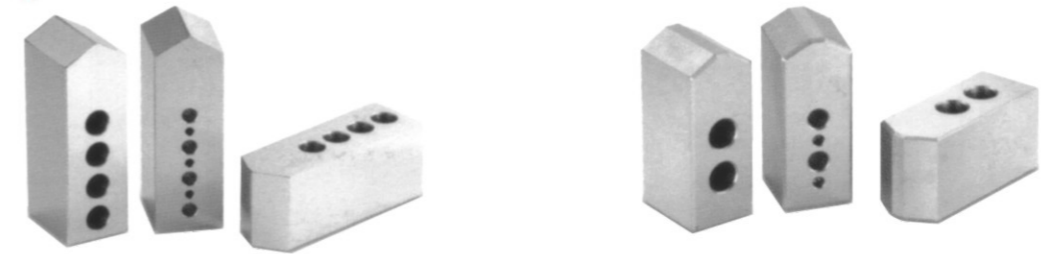
Chuck series number	serration Pitch	JH1	JH2	JH3	JH4	JH5	JH6	JH7	JH9	JH10	JH11	JH18	JH19	JH21	JH22	JH23	JH24	JH25	JH26	質量kg (1個) weight	爪形式 Jaw type	
H01MA	6	3	35	46	85.2	31	6	13.5	20	12	17.5	11	10	44	104	128	56	106	25	0.6	H1	
	8	3	40	55	87.8	37	6	17	25	14	20	13.5	12	42	108	160	48	106.5	22.5	0.7		
	10	3	40	56	98.7	39	6	15	30	16	20	13.5	13	86	145	208	53	120	45	1.0		
	12	3	50	62	104.4	45	6	16	30	18	23	16	15	140	200	260	70	134.5	71.5	1.5		
	15	3	65	75	153.3	55	8	20	50	26	32	22	30	—	—	—	300	150	225	68		3.3
H037M H027M	4	1.5	28	30	54.3	20	5	12	14	11	14	9	8	—	—	—	75	20	63	12	0.3	H2
	6	1.5	35	35	64.3	22	5	10	20	12	17.5	11	11	—	—	—	86	12	69.5	9.5	0.4	
	8	1.5	40	40	80.1	26	5	11.5	25	16	20	13.5	13	—	—	—	106	16	87	11	0.8	
	10	1.5	45	45	95.3	30	5	15	30	18	23	16	15	—	—	—	138	24	106	16	1.2	
	12	1.5	50	50	109.7	37	5	15.5	35	21	26	18	20	—	—	—	166	32	124.5	17.5	1.8	
H3KT	6	1.5	31	35	70.8	23	5	14	20	12	17.5	11	12	12	71	136	68	—	104	36	0.3	H3
	8	1.5	35	51	87	36	5	19	25	14	20	13.5	12	13	100	186	169	87	127	38	0.6	
	10	1.5	40	54	101.3	39	5	10.5	30	16	20	13.5	13	—	—	—	220	82	136.5	54.5	1.0	H1
	12	1.5	50	52	106.64	35	5	20.25	30	21	26	17.5	17	—	—	—	210	84	145.25	47.75	1.3	

Chuck series number	serration Pitch	J1	J2	J3	J4	J5	J6	J7	J8	J9	J10	J11	J12	J13	J14	J15	J16	J17	J18	質量kg (1個) weight	爪形式 Jaw type	
H05M	6	1.5	31	23.5	73	10	5	38	20	15	12	17.5	11	M10	15.5	6	13	46.5	1.5	60°	0.4	H4
	8	1.5	35	26	89.5	12	5	44.5	25	20	16	20	13.5	M12	18	7	14.5	57	1.5	60°	0.5	
	10	1.5	40	29	103.5	14	5	48.5	30	25	18	23	15.5	M14	21	7	16	67.5	1.5	60°	0.7	
	12	1.5	45	32	122	16	5	52	40	30	21	26	17.5	M16	22	7	16.5	85.5	1.5	60°	0.9	

Chuck series number	1~2				2~3				
	A	B	C	D	A	B	C	D	
H01MA	6	49 ~ 66	25 ~ 41	85 ~ 101	109 ~ 125	19 ~ 23	60 ~ 75	120 ~ 136	144 ~ 160
	8	75 ~ 109	18 ~ 50	83 ~ 117	135 ~ 169	23 ~ 57	69 ~ 103	136 ~ 169	188 ~ 222
	10	82 ~ 136	27 ~ 81	85 ~ 140	148 ~ 203	24 ~ 76	86 ~ 139	145 ~ 199	208 ~ 262
	12	83 ~ 166	34 ~ 119	94 ~ 179	154 ~ 239	24 ~ 107	94 ~ 178	154 ~ 238	214 ~ 298
	15	116 ~ 200	—	—	198 ~ 284	32 ~ 100	—	—	300 ~ 384
H037M H027M	4	23 ~ 40	—	—	61 ~ 67	11 ~ 15	—	—	75 ~ 93
	5	28 ~ 63	—	—	63 ~ 89	10 ~ 36	—	—	80 ~ 116
	6	54 ~ 82	—	—	87 ~ 114	13 ~ 40	—	—	128 ~ 155
	8	54 ~ 103	—	—	102 ~ 151	10 ~ 55	—	—	152 ~ 201
	10	84 ~ 132	—	—	140 ~ 187	26 ~ 72	—	—	199 ~ 247
H3KT	6	48 ~ 78	96 ~ 126	32 ~ 60	—	12 ~ 36	60 ~ 84	71 ~ 101	—
	8	75 ~ 109	9 ~ 43	74 ~ 109	107 ~ 142	24 ~ 58	60 ~ 94	125 ~ 159	158 ~ 192
	10	74 ~ 119	34 ~ 79	121 ~ 165	155 ~ 199	14 ~ 59	94 ~ 139	180 ~ 224	214 ~ 259
	12	101 ~ 166	—	—	166 ~ 233	42 ~ 108	—	—	226 ~ 292

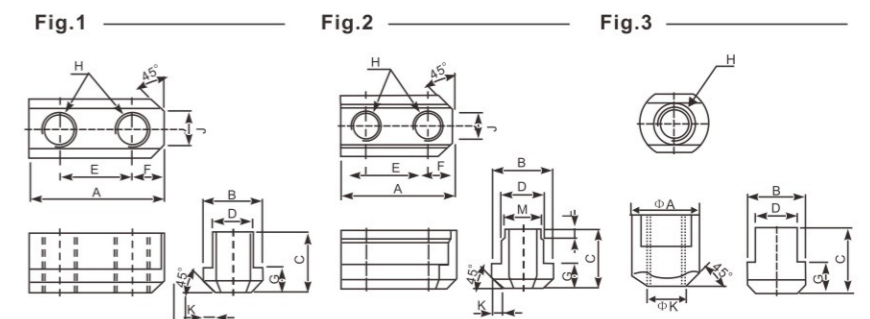
超精密卡盤生爪

SOFT JAWS FOR SUPER PRECISION CHUCK



T-NUT ST型塊

SUITABLE FOR POWER CHUCKS

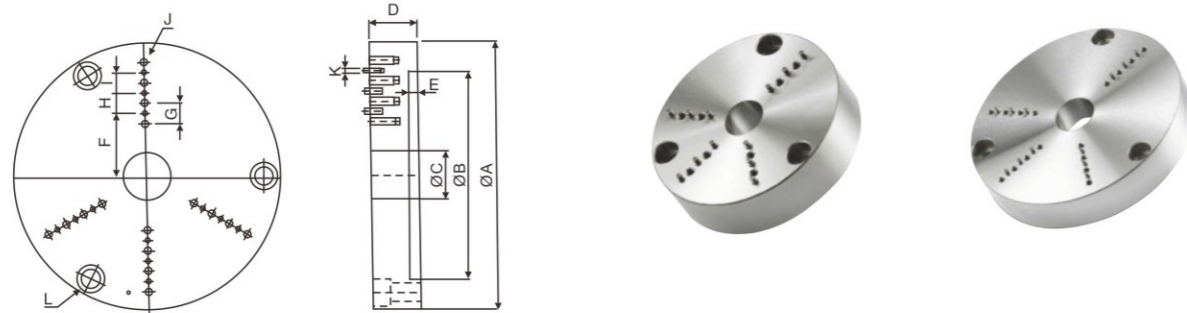


尺寸表 / Size table

型式 Model	A	B	C	D	E	F	G	H	J	K	L	M	Fig
中空 Thru	5"	26	14.5	15	10	14	6	5.5	M8	5	2	—	1
	6"	36	17.5	18.5	12	20	8.2	7.5	M10	8	2.5	—	1
	8"	46.5	20.5	20.5	14	25	10.5	8.5	M12	12	4	—	1
	10"	51	22.5	21.5	16	30	11	8.5	M12	11	3	—	1
	12"	55.5	29.5	27.5	21	30	12	11.5	M16	13	4.5	—	1
中實 Non-Thru	15"(18")	80	33.5	45.5	24	43	17	16.5	M20	11	5	8	22
	6"	36.5	17.5	22.5	12	20	7.5	7.5	M10	6	3	—	1
	8"	48	20.5	25.5	14	25	11	9.5	M12	8	4	—	1
	10"	55	22.5	25.5	16	30	11	9.5	M12	8	4	—	1
	12"	55.5	26.5	33.54	18	30	11.5	13.5	M14	12	5	—	1
	15"(18")	42	35	39.5	25.5	—	—	19	M20	—	25	—	3
	15"(18")3.0	42	35	41.5	26	—	—	19	M20	—	25	—	3
	24"(21")	46	37.5	45	25	—	—	19	M20	—	26.5	—	3

超精密生爪成型盤

FR FORMING RINGS
(FOR SOFT JAWS OF SUPER PRECISION CHUCKS)



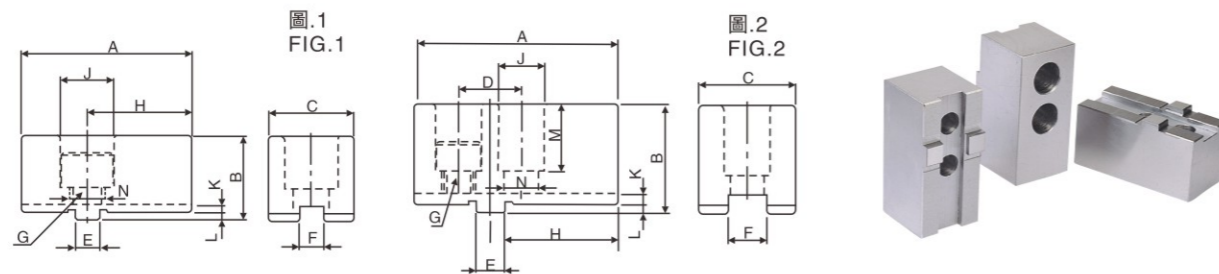
尺寸表 / Size table

單位/UNIT:mm

型式/規格 MODEL /SPEC.	A	B	C	D	E	F	G	H	I	J	K	L	淨重(Kg) Weight
FR-04	112	80	22	30	6	21	12.7	12.7	12.7	6-M5X0.8P	9-Ø3.175	3-M8X1.25P	1.9
FR-06	167	130	30	30	6	40	12.7	12.7	12.7	12-M5X0.8P	9-Ø3.175	3-M10X1.5P	4.3
FR-08	203	160	54	35	6	66	25.4	25.4	--	6-M10X1.5P	6-Ø6.35	3-M10X1.5P	7.2

後拉式夾頭專用生爪

SOFR JAWS FOR PULL BACK POWER CHUCKS



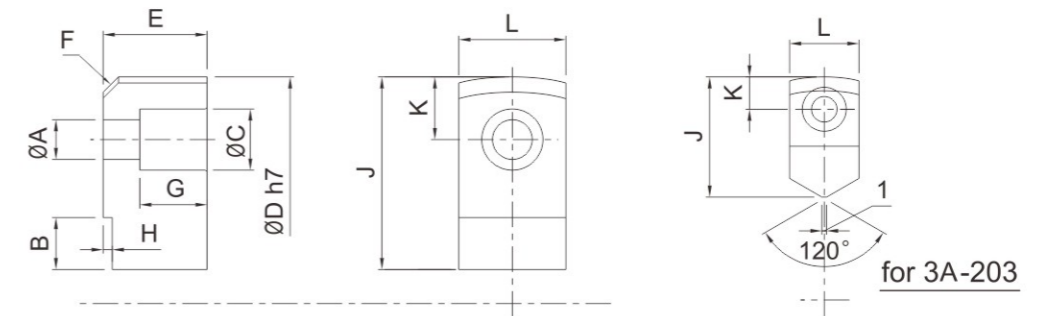
尺寸表 / Size table

單位/UNIT:mm

型式/規格 MODEL /SPEC.	A	B	C	D	E	F	G	H	J	K	L	M	N	參考圖 Reference Drawing
S-04	52	19.5	25	-	8	8	M10x1.5P	30	17.5	2.5	2.5	13	11	圖.1 fig.1
S-05	56	27	30	-	8	8	M10x1.5P	33	20	2.5	2.5	15	11	圖.2 fig.2
S-06	70	34	35	-	10	10	M14X2P	43	23	3.0	3.0	21	15.5	圖.2 fig.2
S-08	84	44.5	40	26	12	16	M12X1.75P	53	20	3.5	3.5	29	13.5	圖.2 fig.2
S-10	100	49.5	50	32	15	18	M14X2P	62	23	3.5	3.5	32	15.5	圖.1 fig.1
S-12	120	54.5	60	36	17	20	M16X2P	78	26	3.5	3.5	36	17.5	圖.1 fig.1
S-15	165	60	70	40	20	24	M17x2P	105	26	5	5	40	18	

3A夾頭之標準生爪

STANDARD SOFT JAW FOR 3A CHUCK

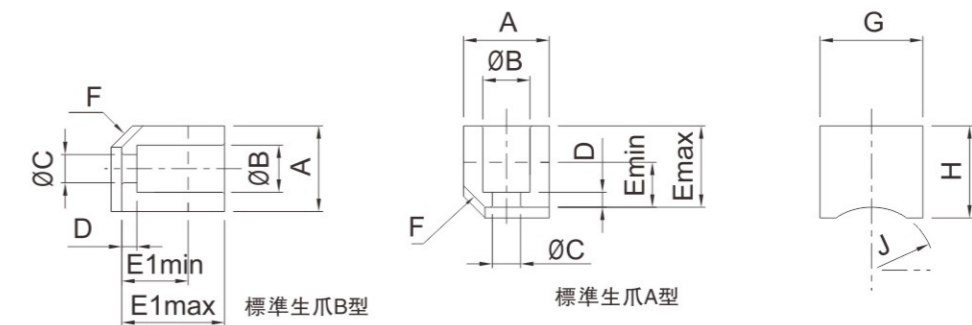


保留規格修改的權利
Subject to technical changes

型號/寸法 Model/Dim.	A	B	C	D	E	F	G	H	J	K	L
3A-203	5.5	11	9.5	66	12	C3	7	3	26	7	15
3A-204	6.6	11	11	84	17	C4	11	3	32	9.5	20
3A-205	9	13.5	14	108	20	C4	12	3	41.5	13	24
3A-206	11	15	17	129	30	C5	20	3	50	17	30
3A-208	13	15	20	156	34	C5	22	3	63	20.5	35
3A-210	15	20	22	187	39	C5	24	4	74	23	40
3A-212	15	18	22	234	44	C5	29	4	72	23	40

3E夾頭之標準生爪

STANDARD SOFT JAW FOR 3E CHUCK



保留規格修改的權利
Subject to technical changes

型號/寸法 Model/Dim.	A	B	C	D	E _{max.}	E _{min.}	E1 _{max.}	E1 _{min.}	F	G	H	J
3E-05	20	11	6.6	3.5	34	25	41.5	33.5	C5	24	21.5	14.7
3E-06	23	11	6.6	4	44	35	54	43.5		30	28.5	22.7
3E-08	32	14	9	6	54	45	70.5	57.5		35	37	33.25

加高扇形全包軟爪

HIGHER FULL GRIP PIE JAWS



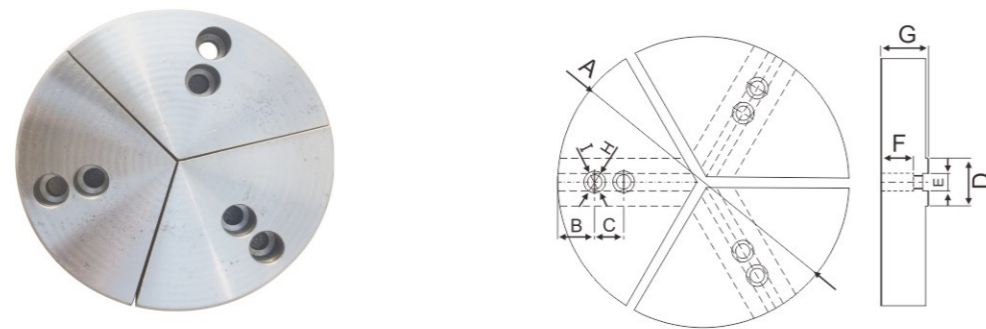
齒距: 1.5mmx60° Serration Pitch:1.5mmx60°

單位/UNIT:mm

MODEL SPEC (mm)	A	B	C	D	E	F	G	H	I
PJ-05H	130	10	14	25	10	28/38/48	40/50/60	13.5	9
PJ-06H	160	15	20	31	12	25/35/45	40/50/60	17	11
PJ-08H	200	24	25	35	14	34/44/54	50/60/70	19	13
PJ-10H	240	25	30	42	16	44/54/64	60/70/80	19	13
PJ-12H	290	35	30	50	21/18	40/50/60	60/70/80	25/23	17/15
PJ-15H	370	37	43	62	22/25.5	46/56/66	70/80/90	32	21

標準扇形全包軟爪

STANDARD FULL GRIP PIE JAWS



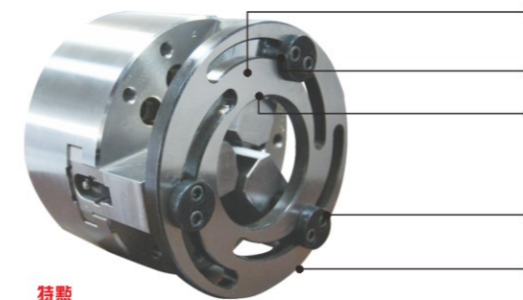
齒距: 1.5mmx60° Serration Pitch:1.5mmx60°

Model/Spec (mm)	A	B	C	D	E	F	G	H	I	GW KG
PJ-05	130	10	14	25	10	18	30	13.5	9	3.6
PJ-06	160	15	20	31	12	21	36	17	11	4.9
PJ-08	200	24	25	35	14	22	38	19	13	10.6
PJ-10	240	25	30	42	16	26	42	19	13	13.6
PJ-12	290	35	30	50	21/18	30	50	25/23	17/15	23.8
PJ-15	370	37	43	62	22/25.5	38	62	32	21	45.8

* 非標可定做 Customized spec can be made.

油壓生爪成型圈(修爪器)

JAW BORING RING FOR SOFT JAWS



FEATURE

To Suit for CNC lathe

For adjusting the high accuracy of chuck during machining process.

The operation process as following:

1. Set the jaws to correct position. 2. Adjust the jaw boring ring to fit the bolt holes.
3. Lock the chuck to clamp the jaw boring ring. 4. Machining the required size.
5. Unlock the chuck. 6. If these steps are operated correctly, the clamping accuracy will be very precise.

三夾順着(旋渦狀態)緩緩回轉夾緊可任意調整外夾, 內張所需尺寸。

[偏心制止帽梢]逆向鎖緊, 活動行程大。

不須再鑽孔攻牙, 利用生爪之螺絲孔插入制止帽梢。

本體材質經熱處理後研磨, 硬度高, 強韌耐久使用。

成型圈適用5"、6"、8"、10"、12"、15" 五種尺寸動力夾盤。

特點

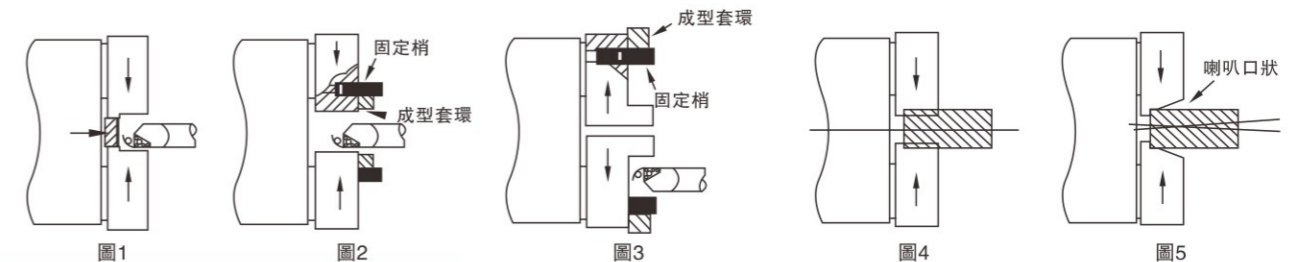
- ◎ 1、握持增強, 提高真圓度、圓心度、圓筒度等精度, 不會產生喇叭口狀及離心震動, 影響精度, 有良好的控制性效果。
- ◎ 2、外夾內張二者可使用, 可根據所需任意調整尺寸, 操作方便快捷, 省時省力, 有效使用;
- ◎ 3、舊的夾頭使用成型圈後, 可有效提高精度及握持力, 可恢復同新品一樣。

使用說明

使用成型圈, 不但能做到外夾, 內張與穿通成形3種方式的成形, 也可夾在工作物件時在同樣的狀態形, 所以芯振擺少, 把握力

也就提升。(如圖一、二、三)使用成型圈。與夾頭一成形時, 無芯振擺現象, 把握力可達100%, 可提高精度(如圖四)。使用硬爪夾持時

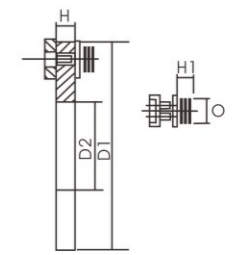
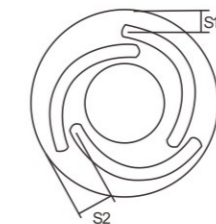
接觸面不良會產生喇叭口狀, 持握力不良會產生離心振動, 影響精度, 危險增加(如圖五)。



油壓軟爪成型圈(修爪器)



尺寸圖



尺寸表 / Size table

型式 MODELS	H	D1	D2	S1	S2	G	H1	O
5"	12	140	60	12	28	10	9	13.5
6"	12	168	80	12	32	10	9	16.5
8"	12	218	115	17	36	10	9	18.5
10"	12	258	150	15	40	10	9	18.5
12"中空Thru-hole	15	316	188	21	50	10	9	24.5
12"中實Non-Thru	15	316	188	21	50	10	9	21.5
15"	20	380	230	23	52	12	16	31
21"	需訂制 It's made for customized order							
24"								
32"								
40"								
63"								
79"								

軟爪微調成型圈 (修爪器)

JAW BORING FIXTURE FOR SOFT JAWS

FEATURE

To Suit for CNC lathe

This type jaw boring fixture with a continuous fine adjusting ring can provide accurate position, to reduce the abrasion of soft jaws. Soft jaws can be made to requirements size by this fixture easily. Only several simple process, soft jaws can be bored precisely. With anticlockwise lock, the machining field can be easily expended.

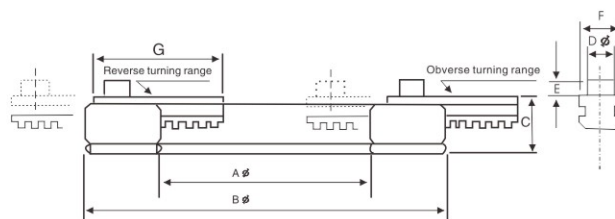
- ◎ 傳統成型圈需要套圈中心杆等配件，本產品則不需要，節省費用
- ◎ 本成型圈採用連續微調方式，易操作，對軟爪的磨損降到最低
- ◎ 祇需要反轉鎖定位置，就能擴大軟爪的夾持範圍
- ◎ 本成型圈可適用於手動夾頭與液壓夾頭

規格表 / SPECIFICATIONS 單位/UNIT: mm

規格/型號 Spec/Model	A	B	C	D	E	F	G	爪行程(直徑) Jaw Stroke (Dia)	最大夾持力 Max Gripping (Kgf)	最大轉速 Max RPM	重量 Weight (Kg)	適用卡盤 Matching Chuck
TL-100	100	170	26	13	7	19	61	7.4	1500	800	2.7	5"/6"/8"
TL-125	125	200	26	16.3	8	19	61	7.4	1500	700	3.5	6"/8"/10"
TL-160	160	248	31	18.3	8	24	80	8.5	1750	600	5.6	8"/10"/12"

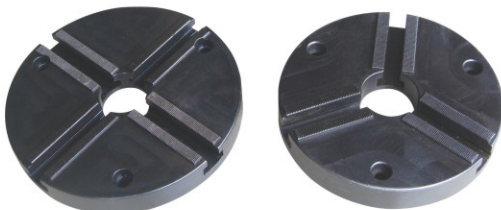


反轉位置: reverse turning range
正轉位置: obverse turning range



油壓生爪成型器

FORMING PLATE FOR SOFT JAWS



- ◎ 本產品適用於模具放電成型車、銑成型用。
It is applicable to make the mould by EDM processing or machining and milling processing.
- ◎ 成型盤可用規格: 5" 6" 8" 10" 12"
The available spec of this forming plate are 5" 6" 8" 10" 12" size.
- ◎ 成型盤可用樣式: 二爪, 三爪, 四爪
The available forming plate type are 2-jaw or 3-jaw or 4-jaw type.

外徑成型圈

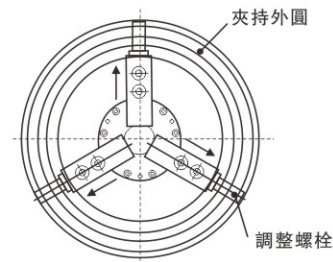
Jaw boring ring for outside diameter

- ◎ 夾持卡爪外部，修卡爪外圓，使卡爪能夠外撐工件進行加工。

This Jaw boring ring is for machining the external circle of the jaws, in order to expand the workpiece precisely

規格表 / SPECIFICATION

規格 Model	調整外徑 Range	適用卡盤 For Chuck
OR-6	Φ140-Φ170	6"
OR-8	Φ170-Φ215	8"
OR-10	Φ215-Φ270	10"



應用案例 Applications



注: OR-12與OR-15及其他規格的外徑成型圈可非標訂制
For OR-12 or OR-15 and other spec is available for customized order.