

➤ N-200A SERIES

三爪高速中空油壓夾頭
(包含連接板)

3-JAW WEDGE TYPE THROUGH-HOLE POWER CHUCK(WITH ADAPTOR)

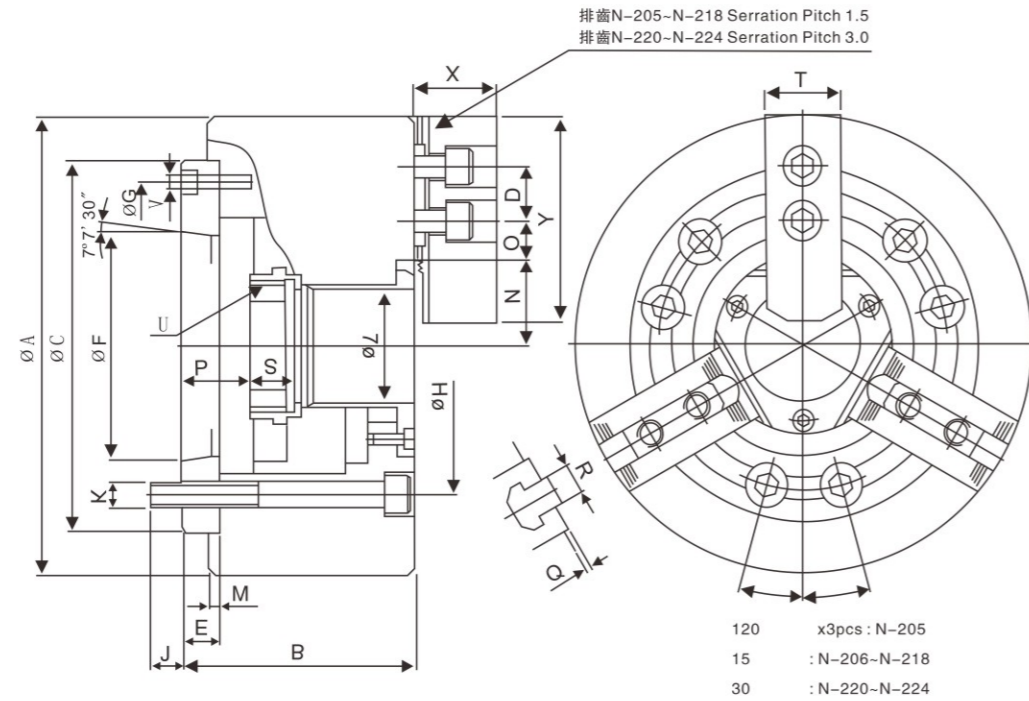


- 1. N-200A型夾頭系依ASA B5.9A型主軸標準而設計
- More large bore : The largest bore in wedge type power operated chucks.
- Model N-200A chucks are assembled with adaptor for ASA B5.9 type A spindles.

型式 Model	通孔直徑 Through hole dia. (mm)	柱塞行程 Piston stroke (mm)	爪行程(直徑) Jaw stroke dia. (mm)	最大容許推力 Max DB pull (Kgf)	最大夾持力 Max clamping force (Kgf)	最大使用油壓力 (Kgf/cm ²) Max oil pressure	最高回轉速 max r.p.m	重量 Weight (kg)	慣性矩 kg·m ²	適合油壓缸 Matched cylinders	適合硬爪 Matched HJ	適合生爪 Matched HC	外徑夾持範圍 Clamping range (mm)
N-205A4	Ø33	10	5.4	1784	3671	28.5	7000	7.8	0.020	M1036	HJ05	HJ05	Ø6-Ø135
N-205A5	Ø33	10	5.4	1784	3671	28.5	7000	9	0.023	M1036	HJ05	HJ05	Ø6-Ø135
N-206A4	Ø45	12	5.5	2243	5812	28.5	6000	15.5	0.065	M1246	HJ06	HJ06	Ø15-Ø169
N-206A5	Ø45	12	5.5	2243	5812	28.5	6000	14.7	0.062	M1246	HJ06	HJ06	Ø15-Ø169
N-206A6	Ø45	12	5.5	2243	5812	28.5	6000	17.3	0.073	M1246	HJ06	HJ06	Ø15-Ø169
N-208A5	Ø52	16	7.4	3558	9075	26.5	5000	25.8	0.190	M1552	HJ08	HJ08	Ø20-Ø210
N-208A6	Ø52	16	7.4	3558	9075	26.5	5000	25	0.184	M1552	HJ08	HJ08	Ø20-Ø210
N-208A8	Ø52	16	7.4	3558	9075	26.5	5000	29.3	0.217	M1552	HJ08	HJ08	Ø20-Ø210
N-210A6	Ø75	19	8.8	4385	11319	27.5	4200	41	0.370	M1875	HJ10	HJ10	Ø25-Ø254
N-210A8	Ø75	19	8.8	4385	11319	27.5	4200	38	0.340	M1875	HJ10	HJ10	Ø25-Ø254
N-210A11	Ø75	19	8.8	4385	11319	27.5	4200	48.4	0.436	M1875	HJ10	HJ10	Ø25-Ø254
N-212A6	Ø91	23	10.6	5812	14990	27.5	3300	62.5	0.809	M2091	HJ12	HJ12	Ø30-Ø304
N-212A8	Ø91	23	10.6	5812	14990	27.5	3300	59.5	0.770	M2091	HJ12	HJ12	Ø30-Ø304
N-212A11	Ø91	23	10.6	5812	14990	27.5	3300	69.9	0.912	M2091	HJ12	HJ12	Ø30-Ø304
N-215A8	Ø117.5	23	10.6	7240	18335	27.5	2500	125	2.255	M2511	HJ15	HJ15	Ø60-Ø381
N-215A11	Ø117.5	23	10.6	7240	18335	23.5	2500	118	2.241	M2511	HJ15	HJ15	Ø60-Ø381
N-215A15	Ø117.5	23	10.6	7240	18335	23.5	2500	138	2.822	M2511	HJ15	HJ15	Ø60-Ø381
N-218A8	Ø117.5	23	10.6	7240	18335	23.5	2000	178	4.830	M2511	HJ15	HJ15	Ø60-Ø450
N-218A11	Ø117.5	23	10.6	7240	18335	23.5	2000	171	4.464	M2511	HJ15	HJ15	Ø60-Ø450
N-218A15	Ø117.5	23	10.6	7240	18335	23.5	2000	191	5.183	M2511	HJ15	HJ15	Ø60-Ø450
N-220A11	Ø180	23	10.6	9177	23861	30.6	1800	215	7.355	ML2816	HJ24-1	HJ24-1	Ø120-Ø510
N-220A15	Ø180	23	10.6	9177	23861	30.6	1800	202	6.910	ML2816	HJ24-1	HJ24-1	Ø120-Ø510
N-224A11	Ø205	26	12	9177	23861	26.5	1400	332	18.199	ML3320	HJ24-1	HJ24-1	Ø150-Ø610
N-224A15	Ø205	26	12	9177	23861	26.5	1400	317	17.376	ML3320	HJ24-1	HJ24-1	Ø150-Ø610
N-224A20	Ø205	26	12	9177	23861	26.5	1400	286	15.677	MI3320	HJ24-1	HJ24-1	Ø150-Ø610

* 保留技術更改的權利，恕不另行通知 Subject to technology changes without prior information
* 非標需求可訂做 Non-standard requirements can be made





型式 Model	A	B	C	D	E	F	G	H	J	K	L	M	N max	O max	O min	P max	P min	Q	R	S	T	U max	V	W	X	Y	參考圖 Ref
N-205A4	135	71	110	14	15	63.513	96	82.55	15.5	3-M10	33	4	26.5	19.75	7.75	16	6	2	10	20	25	M40x1.5	3-M6	45	31	54	Fig-1
N-205A5	135	88	110	14	32	82.563	82.55	104.78	14	3-M10	33	4	26.5	19.75	7.75	33	23	2	10	20	25	M40x1.5	6-M10	45	31	54	Fig-3
N-206A4	169	96	140	20	20	63.513	104.78	82.55	16	6-M10	45	5	32	22.75	9.25	26	14	2	12	19	31	M55x2	6-M10	60	37	73	Fig-2
N-206A5	169	91	140	20	15	82.563	116	104.78	16	6-M10	45	5	32	22.75	9.25	26	14	2	12	19	31	M55x2	3-M6	60	37	73	Fig-1
N-206A6	169	111	140	20	35	106.375	104.78	133.35	16	6-M10	45	5	32	22.75	9.25	46	34	2	12	19	31	M55x2	6-M12	60	37	73	Fig-3
N-208A5	210	109	170	25	23	82.563	133.35	104.78	13	6-M12	52	5	38.7	29.75	14.75	37.5	21.5	2	14	20.5	35	M60x2	6-M10	66	38	95	Fig-2
N-208A6	210	103	170	25	17	106.375	150	133.35	18	6-M12	52	5	38.7	29.75	14.75	31.5	15.5	2	14	20.5	35	M60x2	3-M6	66	38	95	Fig-1
N-208A8	210	126	170	25	40	139.719	133.35	171.45	24	6-M12	52	5	38.7	29.75	14.75	54.5	38.5	2	14	20.5	35	M60x2	6-M16	66	38	95	Fig-3
N-210A6	254	120	220	30	25	106.375	171.45	133.35	18	6-M16	75	5	51	33.75	14.25	33.5	14.5	2	16	25	40	M85x2	6-M12	94	43	110	Fig-2
N-210A8	254	113	220	30	18	139.719	190	171.45	24	6-M16	75	5	51	33.75	14.25	26.5	7.5	2	16	25	40	M85x2	3-M8	94	43	110	Fig-1
N-210A11	254	145	220	30	50	196.869	171.45	235	28	6-M16	75	5	51	33.75	14.25	58.5	39.5	2	16	25	40	M85x2	6-M20	94	43	110	Fig-3
N-212A6	304	129	220	30	25	106.375	171.45	133.35	18	6-M16	91	6	61.3	45.75	15.75	33	10	2	21	28	50	M100x2	6-M12	108	51	130	Fig-2
N-212A8	304	122	220	30	18	139.719	190	171.45	25	6-M16	91	6	61.3	45.75	15.75	26	3	2	21	28	50	M100x2	3-M8	108	51	130	Fig-1
N-212A11	304	154	220	30	50	196.869	171.45	235	28	6-M16	91	6	61.3	45.75	15.75	58	35	2	21	28	50	M100x2	6-M20	108	51	130	Fig-3
N-215A8	381	160	300	43	33	139.719	235	171.45	24	6-M20	117.5	6	82	45.25	16.75	40	17	5	22	43	62	M130x2	6-M16	139	66	165	Fig-2
N-215A11	381	149	300	43	22	196.869	260	235	28	6-M20	117.5	6	82	45.25	16.75	29	6	5	22	43	62	M130x2	3-M10	139	66	165	Fig-1
N-215A15	381	184	300	43	57	285.775	235	330.2	24	6-M20	117.5	6	82	45.25	16.75	64	41	5	22	43	62	M130x2	6-M24	139	66	165	Fig-3
N-218A8	450	160	300	43	33	139.719	235	171.45	24	6-M20	117.5	6	82	79.75	16.75	40	6	5	22	43	62	M130x2	6-M16	139	66	165	Fig-2
N-218A11	450	149	300	43	22	196.869	260	235	28	6-M20	117.5	6	82	79.75	16.75	29	6	5	22	43	62	M130x2	3-M10	139	66	165	Fig-1
N-218A15	450	184	300	43	57	285.775	235	330.2	24	6-M20	117.5	6	82	79.75	16.75	64	41	5	22	43	62	M130x2	6-M24	139	66	165	Fig-3
N-220A11	510	169	380	60	41	196.869	330.2	235	30	6-M24	180	6	112.5	69	23	52	29	5	25	38	65	M190x3	6-M20	206	73	180	Fig-2
N-220A15	510	155	380	60	27	285.775	330.2	330.2	33	6-M24	180	6	112.5	69	23	38	15	5	25	38	65	M190x3	3-M12	206	73	180	Fig-1
N-224A11	610	186	520	60	45	196.869	463.6	235	28	6-M24	205	6	139.9	87.5	24.5	61	35	5	25	38	65	M215x3	6-M20	230	73	180	Fig-2
N-224A15	610	183	520	60	42	285.775	463.6	330.2	33	6-M24	205	6	87.5	87.5	24.5	58	32	5	25	38	65	M215x3	6-M24	230	73	180	Fig-2
N-224A20	610	166	520	60	25	412.775	463.6	463.6	35	6-M24	205	6	139.9	87.5	24.5	41	15	5	25	38	65	M215x3	3-M10	230	73	180	Fig-1

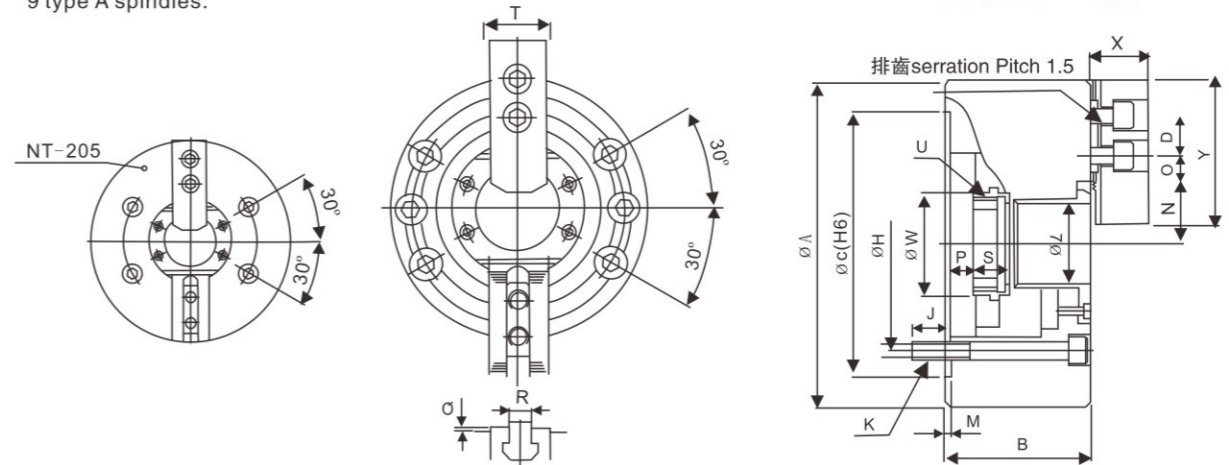
* 保留技術更改的權利，恕不另行通知 Subject to technology changes without prior information
* 非標需求可訂做 Non-standard requirements can be made

> NT-200 SERIES

二爪中空油壓夾頭
(不含連接板)

2-JAW WEDGE TYPE THROUGH
-HOLE POWER CHUCK

- 1. NT200型夾頭採用高級合金鋼材質，所有滑動面經表面硬化及研磨處理，以提高回轉精度及耐久性。潤滑嘴位於基爪。
- 2. 基爪：1.5mmx60° 鋸齒狀缺口。
- 3. 安裝：配合件直接安裝並符合DIN,BS,ISO,ASA,B5-9, A型之主軸標準。
- All sliding surfaces are hardened and ground for accurate actual running and long service repeatability. Lubrication nipple in each base jaw.
- Base jaw : 1.5mm x 60° serration.
- Mounting : Adaptor mounting to fit with DIN, ISO, BS, ASA B5. 9 type A spindles.



型式 Model	通孔直徑 Through hole dia (mm)	柱塞行程 Piston stroke (mm)	爪行程(直徑) Jaw stroke dia (mm)	最大容許推力 Max DB pull (Kgf)	最大夾持力 Max clamping force (Kgf)	最大使用油壓 力(Kgf/cm ²) Max oil pressure	最高回轉速 max r.p.m	重量 Weight (kg)	慣性矩 kg·m ²	適合油壓缸 Matched cylinders	適合生爪 Matched HC	適合硬爪 Matched HJ	外徑夾持範圍 Clamping range (mm)
NT-205	Ø33	10	5.4	1189	2447	19.5	7000	6.8	0.017	M1036	HJ05	HJ05	HJ05
NT-206	Ø45	12	5.5	1495	3875	18.9	6000	12.8	0.054	M1246	HJ06	HJ06	HJ06
NT-208	Ø52	16	7.4	2366	5975	18.4	5000	22	0.163	M1552	HJ08	HJ08	HJ08
NT-210	Ø75	19	8.8	2927	7546	18.4	4200	34	0.306	M1875	HJ10	HJ10	HJ10
NT-212	Ø91	23	10.6	3875	9993	18.4	3300	55	0.717	M2091	HJ12	HJ12	HJ12
NT-215	Ø117.5	23	10.6	4823	12236	15.3	2500	106	2.17	M2511	HJ15	HJ15	HJ15

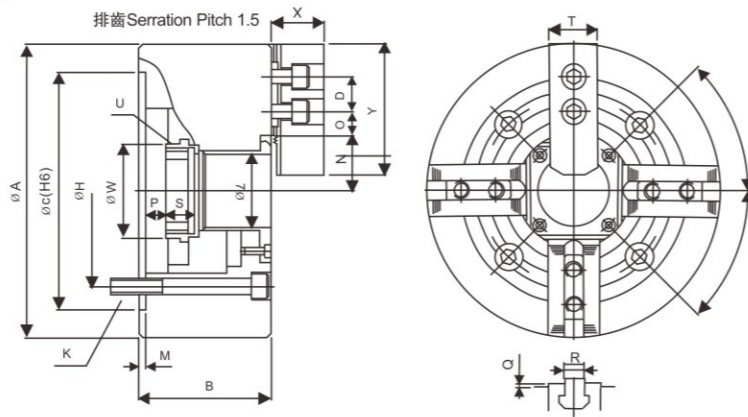
型式 Model	A	B	C (H6)	D	H	J	K	M	L	N max	O max	O min	P max	P min	Q	R	S	T	U max	W	X	Y
NT-205	135	60	110	14	82.55	15	4-M10x60	33	4	26.5	19.75	7.75	1	-9	2	10	20	62	M40x1.5	45	31	54
NT-206	169	81	140	20	104.78	16	6-M10x80	45	5	32	22.75	9.25	11	-1	2	12	19	50	M55x2	60	37	73
NT-208	210	91	170	25	133.35	20	6-M12x90	52	5	38.7	29.75	14.75	14.5	-1.5	2	14	20.5	40	M60x2	66	38	95
NT-210	254	100	220	30	171.45	22	6-M16x100	75	5	51	33.75	14.25	8.5	-10.5	2	16	25	35	M85x2	94	43	110
NT-212	304	110	220	30	171.45	23	6-M16x110	91	6	61.3	45.75	15.75	8	-15	2	21	28	31	M100x2	108	51	130
NT-215	381	133	300	43	235	35	6-M20x135	117.5	6	82	45.25	16.75	7	-16	5	22	43	23	M130x2	139	66	165

* 保留技術更改的權利，恕不另行通知 Subject to technology changes without prior information
* 非標需求可訂做 Non-standard requirements can be made

> NIT-200 SERIES

四爪中空油壓夾頭 (不含連接板)

4-JAW WEDGE TYPE THROUGH-HOLE POWER CHUCK



- 1. NIT200型夾頭採用高級合金鋼材質，所有滑動面經表面硬化及研磨處理，以提高回轉精度及耐久性。潤滑嘴位于基爪。
- 2. 基爪：1.5mmx60° 鋸齒狀缺口。
- 3. 安裝：配合件直接安裝并符合DIN,BS,ISO,ASA,B5-9, A型之主軸標準。
- 4-jaw through-hole power chuck (adapter excluded)
- All sliding surfaces are hardened and ground for accurate actual running and long service repeatability. Lubrication nipple in each master jaw.
- Master jaw : 1.5mm x 60° serration.
- Mounting : Adaptor mounting to fit with DIN, ISO, BS, ASA B5.9 type A spindles.

型式 Model	通孔直徑 Through hole dia (mm)	柱塞行程 Piston stroke (mm)	爪行程(直徑) Jaw stroke dia (mm)	最大拉杆推力 Max DB pull (kgf)	最大夾持力 Max clamping force (Kgf)	最大使用壓力 Max. Operating Pressure MPa(kgf/cm ²)	最高回轉速 max r.p.m	重量 Weight (kg)	慣性矩 kg·m ²	適合油壓缸 Matched cylinders	適合生爪 Matched HC	適合硬爪 Matched HJ	外徑夾持範圍 Clamping range (mm)
NIT-206	Ø45	12	5.5	2243	5812	28.5	4500	13.7	0.058	M1246	HC06	HJ06	Ø15-Ø169
NIT-208	Ø52	16	7.4	3558	9075	26.5	3600	24	0.177	M1552	HC08	HJ08	Ø20-Ø210
NIT-210	Ø75	19	8.8	4385	11319	27.5	3200	36	0.324	M1875	HC10	HJ10	Ø25-Ø254
NIT-212	Ø91	23	10.6	5812	14990	27.5	2700	58.5	0.763	M2091	HC12	HJ12	Ø30-Ø304
NIT-215	Ø117.5	23	10.6	7240	18355	23.5	1900	114	2.331	M2511	HC15	HJ15	Ø60-Ø381
NIT-218	Ø117.5	23	10.6	7240	18355	23.5	1500	122	3.2	M2511	HC15	HJ15	Ø60-Ø381
NIT-224	Ø205	26	12	9177	23861	26.5	1000	264	14.5	M13320	HC24-1	HJ24-1	Ø150-Ø610

型式 Model	A	B	C (H6)	D	H	J	K	L	M	N max	O max	O min	p max	p min	Q	R	S	T	U max	V	W	X	Y
NIT-206	169	81	140	20	104.78	16	4-M10x80	45	5	32	22.75	9.25	11	-1	2	12	19	31	M55x2	60	37	73	
NIT-208	210	91	170	25	133.35	20	4-M12x90	52	5	38.7	29.75	14.75	14.5	-1.5	2	14	20.5	35	M60x2	66	38	95	
NIT-210	254	100	220	30	171.45	22	4-M16x100	75	6	51	33.75	14.25	8.5	-10.5	2	16	25	40	M85x2	94	43	110	
NIT-212	304	110	220	30	171.45	23	4-M16x110	91	6	61.3	45.75	15.75	8	-15	2	21	28	50	M100x2	108	51	130	
NIT-215	381	133	300	43	235	35	4-M20x135	117.5	6	82	45.25	16.75	7	-16	5	22	43	62	M130x2	139	66	165	
NIT-218	450	133	300	43	235	35	4-M20x135	117.5	6	82	79.75	16.75	7	-16	5	22	43	62	M130x2	139	66	165	
NIT-224	610	147	520	60	463.5	35	8-M24x150	205	6	139.9	87.5	24.5	16	-10	5	25	38	65	M215x3	230	73	180	

* 保留技術更改的權利，恕不另行通知 Subject to technology changes without prior information
 * 非標需求可訂做 Non-standard requirements can be made

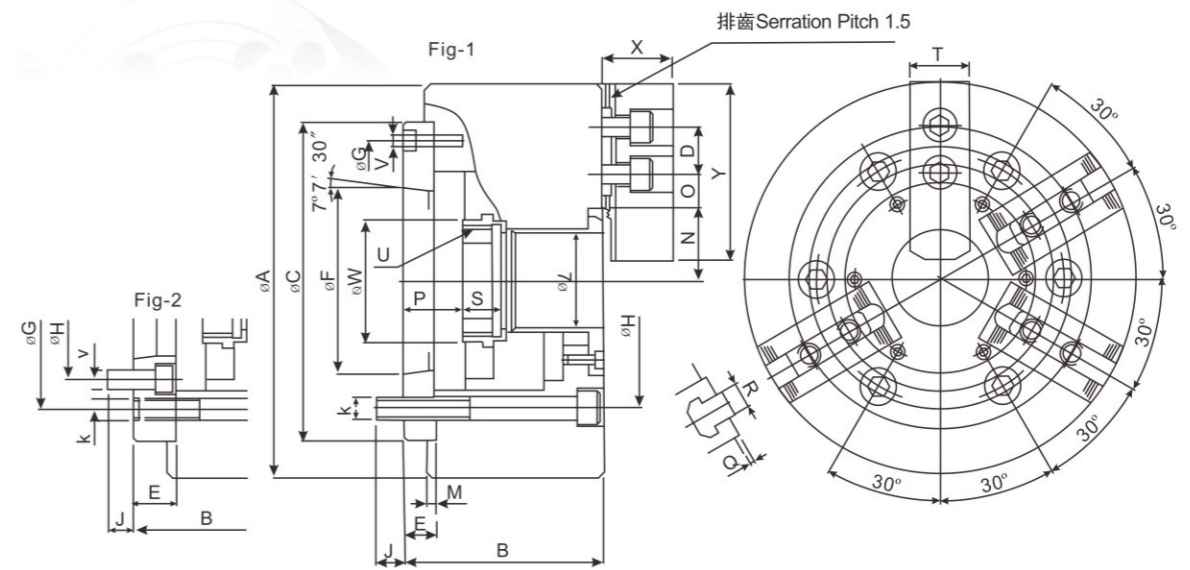
> NHT SERIES

二爪三爪共用中空油壓夾頭

2 JAWS AND 3 JAWS THROUGH-HOLE POWER CHUCKS (WITH ADAPTOR)



- 1. 可做圓型與不規則之工作夾持，不須換夾頭。
- 2. 夾頭系依ASA B5.9 A型主軸標準而設計。
- 3. 夾頭採用高級合金鋼材質，所有滑動面均經表面硬化及研磨處理，以提高回轉精度及耐久性。
- Gripping of round or irregular workpiece does not need to change the chuck.
- The chucks are designed according to ASA B5.9 type A spindle.
- The chucks are made from high grade alloy steel. All sliding surfaces are hardened and ground to increase running accuracy and longer service life.



型式 Model	通孔直徑 Through hole dia. (mm)	柱塞行程 Piston stroke (mm)	爪行程(直徑) Jaw stroke dia. (mm)	最大拉杆推力 (kgf) Max DB pull		最大夾持力 (kgf) Max clamping force		最大使用油壓力 Max oil pressure (kgf/cm ²)		最高回轉速 max r.p.m	重量 Weight (kg)	適合油壓缸 Matched cylinders	適合生爪 Matched HC	適合硬爪 Matched HJ
				三爪	二爪	三爪	二爪	三爪	二爪					
NHT-208A5	52	16	7.4	2243	1495	5812	3875	17.2	12.1	3500	25.5	M1552	HC06	HJ06
NHT-208A6	52	16	7.4	2243	1495	5812	3875	17.2	12.1	3500	24.7	M1552	HC06	HJ06

型式 Model	A	B	C	D	E	F	H	G	J	K	L	M	N max	O max	O min	p max	p min	Q	R	S	T	U max	V	W	X	Y	參考圖 Ref
NHT-208A5	210	113	170	20	23	82.563	133.5	104.78	13	6xM12	52	5	41.8	34	7.5	37.5	21.5	2	12	20.5	32	M60xP2.0	6xM10	66	37	73	Fig-2
NHT-208A6	210	107	170	20	17	106.375	150	133.35	17	6xM12	52	5	41.8	34	7.5	31.5	15.5	2	12	20.5	32	M60xP2.0	3xM6	66	37	73	Fig-1

* 保留技術更改的權利，恕不另行通知 Subject to technology changes without prior information
 * 非標需求可訂做 Non-standard requirements can be made

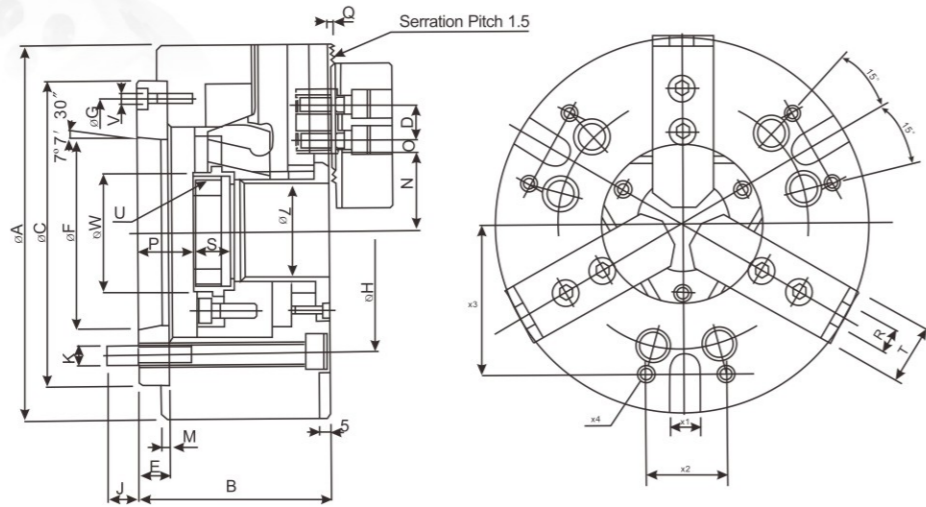
> NB-200A SERIES

三爪超大孔中空油壓夾頭
(包含連接板)



3-JAW WEDGE TYPE EXTRA LARGE THROUGH-HOLE POWER CHUCK (WITH ADAPTOR)

- 1. 超大貫通孔徑：油壓夾頭中，具最大之貫穿孔徑。
- 2. 尺寸規格提高20%：比一般夾頭，具高約20%之轉速，夾持力及貫通孔徑尺寸。
- 3. NB-200A型夾頭係依ASA B5.9 A型主軸標準而設計。
- 4. NB-200A型夾頭採用高級合金鋼材質，所有滑動面均經表面硬化及研磨處理，以提高回轉精度及耐久性。
- More large bore: The largest bore in wedge type power operated chucks.
- 20% large bore: Approximately 20% higher speed, higher gripping force and larger bore compared with regular chucks.
- Model NB-200A chucks are assembled with adaptor for ASA B5.9 type A spindles.
- Model NB-200A chucks are manufactured from high grade alloy steel.
- All sliding surfaces are hardened and ground for accurate actual running and long service repeatability.



型式 Model	通孔直徑 Through hole dia (mm)	柱塞行程 Piston stroke (mm)	爪行程(直徑) Jaw stroke dia (mm)	最大拉桿推力 Max DB pull (kgf)	最大夾持力 Max clamping force (Kgf)	最大使用油壓力 Max oil pressure (kgf/cm ²)	最高回轉速 max r.p.m	重量 Weight (kg)	慣性矩 kg·m ²	適合油壓缸 Matched cylinders	適合生爪 Matched HC	適合硬爪 Matched HJ
NB-306A5	Ø52	12	5.4	2200	5700	18.4	6000	14	0.06	M1552	HC06	Hj06
NB-208A6	Ø66	16	7.4	3500	8973	20.5	4600	24	0.14	M1868	HC08	HJ08
NB-210A8	Ø78	19	8.8	4300	11000	27.5	4200	37.4	0.4	M1878	HC10	HJ10
NB-212A11	Ø122	23	10.6	5800	15000	20.5	3200	65	0.95	M2511	HC12	HJ12

型式 Model	A	B	C (H6)	D	E	F	G	H	J	K	L	M	N max	O max	O min	p max	p min	Q	R	S	T	U max	V	W	X1 (H12)	X2	X3	X4
NB-306A5	170	91	140	20	15	82.563	116	104.78	14.5	6×M10	52	5	34.3	18.25	9.25	26	14	2	12	20	32	M60×2.0	3×M6	65	16	36	65	M8
NB-208A6	210	103	170	25	17	106.375	150	133.35	19.5	6×M12	66	5	42	23.75	11.75	31.5	15.5	2	14	20	37	M74×2.0	3×M6	80	16	45	80	M8
NB-210A8	254	113	220	30	18	139.719	190	171.45	24	6×M16	78	5	53	33.75	14.25	26.5	7.5	2	16	25	42	M87×2.0	6×M8	94	16	60	102	M10
NB-212A11	315	134	300	30	22	196.869	260	235	28	6×M20	122	6	74.2	36.25	12.75	42	19	2	21	28	52	M135×2.0	3×M10	143	20	60	138	M10

* 保留技術更改的權利，恕不另行通知 Subject to technology changes without prior information
* 非標準需求可訂做 Non-standard requirements can be made

> VA SERIES

三爪中實油壓夾頭
(包含連接板)



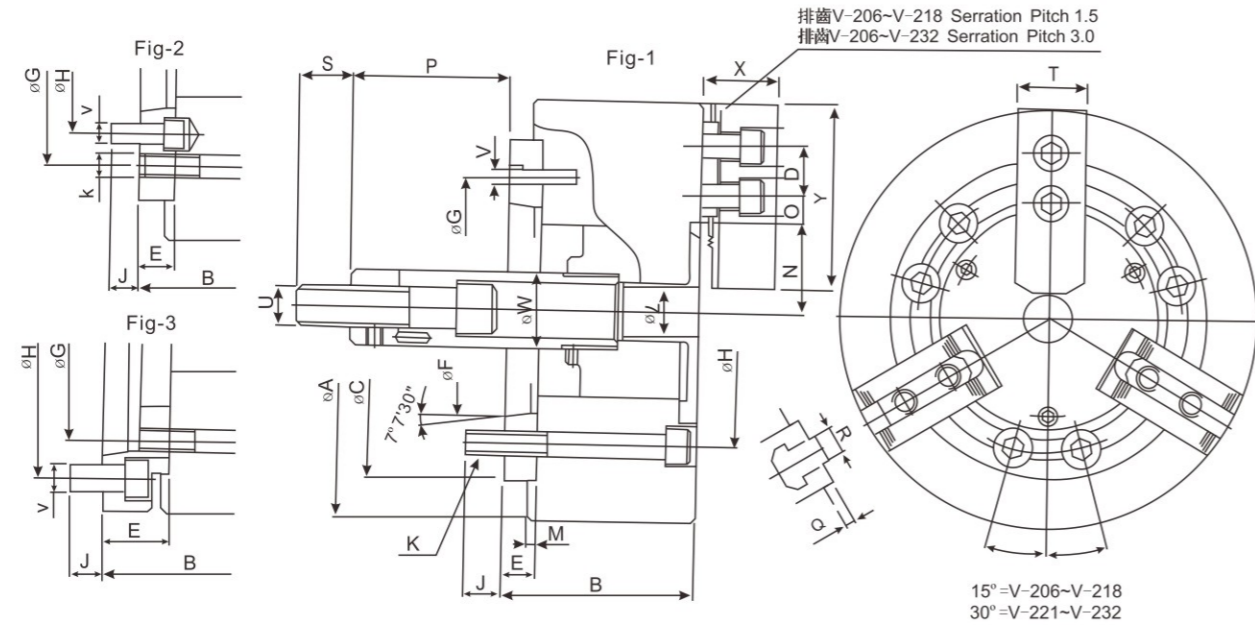
3-JAW WEDGE TYPE NON THROUGH HOLE POWER CHUCK (WITH ADAPTOR)

- 1. 主軸配合件可採用ASA或DIN以搭配機器主軸。
- High performance : Similar high performance with N series.
- Chuck mounting screws : Metric or UNC socket head cap screws are supplied for installing the chuck to the spindle.
- Alternative spindle adaptors : ASA or DIN adaptors can be supplied as requested.

規格 / Specification

型式 Model	柱塞行程 Piston stroke (mm)	爪行程(直徑) Jaw stroke dia (mm)	最大拉桿推力 Max DB pull (kgf)	最大夾持力(Kgf) Max clamping force	最大使用油壓力 Max oil pressure (kgf/cm ²)	最高回轉速 max r.p.m	重量 Weight (kg)	慣性矩 kg·m ²	適合油壓缸 Matched cylinders	適合硬爪 Matched HJ	適合生爪 Matched HC	外徑夾持範圍 Clamping range (mm)
V-206A5	20	9.2	1835	5253	26.5	5200	13.2	0.05	MS105C	HJ06	HC06	Ø18-Ø165
V-206A6	20	9.2	1835	5253	26.5	5200	15.8	0.059	MS105C	HJ06	HC06	Ø18-Ø165
V-208A5	21	9.7	2549	7648	25.5	4500	25.8	0.154	MS125C	HJ08	HC08	Ø26-Ø210
V-208A6	21	9.7	2549	7648	25.5	4500	25	0.149	MS150C	HJ08	HC08	Ø26-Ø210
V-208A8	21	9.7	2549	7648	25.5	4500	29.3	0.175	MS200C	HJ08	HC08	Ø26-Ø210
V-210A6	25	8.8	2957	11013	28.6	4000	40.5	0.35	MS200C	HJ10	HC10	Ø26-Ø254
V-210A8	25	8.8	2957	11013	28.6	4000	37.5	0.33	MS200C	HJ10	HC10	Ø26-Ø254
V-210A11	25	8.8	2597	11013	28.6	4000	47.9	0.417	MS200C	HJ10	HC10	Ø26-Ø254
V-212A6	30	10.5	4181	15907	27.5	3300	66.5	0.76	MS200C	HJ12-1	HC12-1	Ø26-Ø304
V-212A8	30	10.5	4181	15907	27.5	3300	64.4	0.75	MS200C	HJ12-1	HC12-1	Ø26-Ø304
V-212A11	30	10.5	4181	15907	27.5	3300	72.9	0.888	MS200C	HJ12-1	HC12-1	Ø26-Ø304
V-215A8	35	16	8362	25391	32.6	3000	115	2.05	MS200C	HJ15-1	HC15-1	Ø68-Ø381
V-215A11	35	16	8362	25391	32.6	3000	108	1.92	MS200C	HJ15-1	HC15-1	Ø68-Ø381
V-215A15	35	16	8362	25391	32.6	3000	128	2.281	MS200C	HJ15-1	HC15-1	Ø68-Ø381
V-218A8	35	16	8362	25391	32.6	2700	134	3.35	MS200C	HJ15-1	HC15-1	Ø130-Ø450
V-218A11	35	16	8362	25391	32.6	2700	122	3.05	MS200C	HJ15-1	HC15-1	Ø130-Ø450
V-218A15	35	16	8362	25391	32.6	2700	143	3.575	MS200C	HJ15-1	HC15-1	Ø130-Ø450
V-221A11	35	16	8362	27838	32.6	1940	200	6.58	MS200C	HJ24-1	HC24-1	Ø65-Ø530
V-221A15	35	16	8362	27838	32.6	1940	193	6.37	MS200C	HJ24-1	HC24-1	Ø65-Ø530
V-224A11	35	16	8362	27838	32.6	1760	239	7.6	MS200C	HJ24-1	HC24-1	Ø152-Ø610
V-224A15	35	16	8362	27838	32.6	1760	232	7.38	MS200C	HJ24-1	HC24-1	Ø152-Ø610
V-232A11	35	18.6	8362	27838	32.6	600	382	30	MS200C	HJ24-1	HC32-1	Ø100-Ø810
V-232A15	35	18.6	8362	27838	32.6	600	375	28	MS200C	HJ24-1	HC32-1	Ø100-Ø810

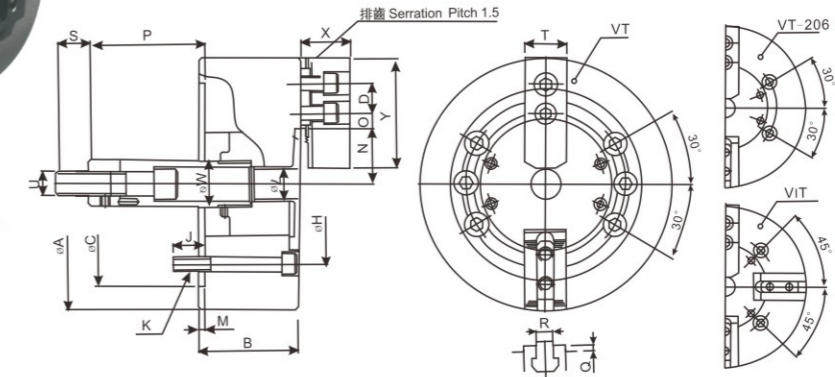
* 保留技術更改的權利，恕不另行通知 Subject to technology changes without prior information
* 非標準需求可訂做 Non-standard requirements can be made



> VT&VIT SERIES

二爪及四爪中實油壓夾頭

2-JAW AND 4-JAW WEDGE TYPE
NON THROUGH HOLE POWER CHUCK



型式 Model	A	B	C	D	E	F	H	G	J	K	L	M	N max	O max	O min	p max	p min	Q	R	S	T	U	V	W	X	Y	參考圖 Ref
V-206A5	165	84	140	20	15	82.563	116	104.78	14	6-M10	21	5	38.7	15.25	9.25	89.6	69.6	4	12	36	31	M16x2.0	3-M6	34	39	73	Fig-1
V-206A6	165	104	140	20	35	106.375	104.78	133.35	16	6-M10	21	5	38.7	15.25	9.25	69.6	49.6	4	12	36	31	M16x2.0	6-M12	34	39	73	Fig-3
V-208A5	210	103	170	25	23	82.563	133.35	104.78	13	6-M12	25	5	46.85	22.25	11.75	109	88	5	14	36	35	M20x2.5	6-M10	38	41	95	Fig-2
V-208A6	210	97	170	25	17	106.375	150	133.35	18	6-M12	25	5	46.85	22.25	11.75	115	94	5	14	36	35	M20x2.5	3-M6	38	41	95	Fig-1
V-208A8	210	120	170	25	40	139.719	133.35	171.45	24	6-M12	25	5	46.85	22.25	11.75	92	71	5	14	36	35	M20x2.5	6-M16	38	41	95	Fig-3
V-210A6	254	109	220	30	25	106.375	171.45	133.35	18	6-M16	34	5	51.1	30.75	11.25	133	108	5	16	36	40	M20x2.5	6-M12	45	46	110	Fig-2
V-210A8	254	102	220	30	18	139.719	190	171.35	25	6-M16	34	5	51.1	30.75	11.25	140	115	5	16	36	40	M20x2.5	3-M8	45	46	110	Fig-1
V-210A11	254	134	220	30	50	196.869	171.45	235	28	6-M16	34	5	51.1	30.75	11.25	108	83	5	16	36	40	M20x2.5	6-M20	45	46	110	Fig-3
V-212A6	304	125	220	30	25	106.375	171.45	133.35	18	6-M16	34	6	61	48.75	12.75	138	108	5	18	36	50	M20x2.5	6-M12	50	54	130	Fig-2
V-212A8	304	118	220	30	18	139.719	190	171.45	25	6-M16	34	6	61	48.75	12.75	145	115	5	18	36	50	M20x2.5	3-M8	50	54	130	Fig-1
V-212A11	304	150	220	30	50	196.869	171.45	235	28	6-M16	34	6	61	48.75	12.75	113	83	5	18	36	50	M20x2.5	6-M20	50	54	130	Fig-3
V-215A8	381	141	300	43	33	139.719	235	171.35	24	6-M20	-	6	77.5	50.25	23.25	71	36	2	25.5	55	62	M30x3.5	6-M16	60	63	165	Fig-2
V-215A11	381	130	300	43	22	196.869	260	235	28	6-M20	-	6	77.5	50.25	23.5	82	47	2	25.5	55	62	M30x3.5	3-M10	60	63	165	Fig-1
V-215A15	381	165	300	43	57	285.775	235	330.2	24	6-M20	-	6	77.5	50.25	23.5	47	12	2	25.5	55	62	M30x3.5	6-M24	60	63	165	Fig-3
V-218A8	450	141	300	43	33	139.719	235	171.45	24	6-M20	-	6	108	50.25	23.5	59	24	2	25.5	55	62	M30x3.5	6-M16	60	63	165	Fig-2
V-218A11	450	130	300	43	22	196.869	260	235	28	6-M20	-	6	108	50.25	23.5	70	35	2	25.5	55	62	M30x3.5	3-M10	60	63	165	Fig-1
V-218A15	450	165	300	43	57	285.775	235	330.2	24	6-M20	-	6	108	50.25	23.5	105	70	2	25.5	55	62	M30x3.5	6-M24	60	63	165	Fig-3
V-221A11	530	146	380	60	27	196.869	330.2	235	30	6-M24	-	6	85	93.5	23.5	70	35	8	25	55	65	M30x3.5	6-M20	60	76	180	Fig-2
V-221A15	530	146	380	60	27	285.775	330.2	330.2	34	6-M24	-	6	85	93.5	24.5	70	35	8	25	55	65	M30x3.5	3-M12	60	76	180	Fig-1
V-224A11	610	146	380	60	27	196.869	330.2	235	30	6-M24	-	6	125	93.5	24.5	70	35	8	25	55	65	M30x3.5	6-M20	60	76	180	Fig-2
V-224A15	610	146	380	60	27	285.775	330.2	330.2	34	6-M24	-	6	125	93.5	24.5	70	35	8	25	55	65	M30x3.5	3-M12	60	76	180	Fig-1
V-232A11	810	156	380	80	27	196.869	330.2	235	30	6-M24	-	6	104.8	196.5	25.5	47	12	9	25	60	74	M30x3.5	6-M20	60	97	210	Fig-2
V-232A15	810	156	380	80	27	285.775	330.2	330.2	33	6-M24	-	6	104.8	196.5	25.5	47	12	9	25	60	74	M30x3.5	3-M12	60	97	210	Fig-1

* 保留技術更改的權利，恕不另行通知 Subject to technology changes without prior information
* 非標需求可訂做 Non-standard requirements can be made

- 1. 適合特殊應用例:應用於三爪夾頭無法夾持之特殊形狀工件,如長方形、棒形或凸緣。
- 2. 可與V或VA系列互換。
- 3. 基本尺寸規格同V型夾頭。
- 4. 高性能同V型夾頭。

- Suitable for special applications: Used to hold special shape work pieces, such as square bar or flanges which is not possible clamping by 3 jaw chuck.
- Interchangeable with V or VA series.
- Basic dimensions are the same as V type.
- High performance as V type.

型式 Model	柱塞行程 Piston stroke (mm)	爪行程(直徑) Jaw stroke dia (mm)	最大拉桿推力 Max DB pull (kgf)	最大夾持力(Kgf) Max clamping force	最大使用油壓力 Max oil pressure (kg/cm ²)	最高回轉速 max r.p.m	重量 Weight (kg)	慣性矩 kg·m ²	適合油壓缸 Matched cylinders	適合生爪 Matched HC	適合硬爪 Matched HJ	外徑夾持範圍 Clamping range (mm)
VT-206	20	20	20	3569	17.3	5200	12	0.045	MS105C MH100	HJ06	HC06	Ø18-Ø165
VT-208	21	21	21	5098	16.3	4500	22	0.13	MS125C MH125	HJ08	HC08	Ø28-Ø210
VT-210	25	25	25	7342	19.4	4000	33.5	0.29	MS150C MH150	HJ10	HC10	Ø24-Ø254
VT-212	30	30	30	10605	18.4	3300	58	0.7	MS150C MH150	HJ12-1	HC12-1	Ø18-Ø304
VIT-212	30	30	30	15907	27.5	2800	64	0.78	MS125C MH125	HJ12-1	HC12-1	Ø18-Ø304
VT-215	35	35	35	16927	21.7	3000	100.6	1.7	MS200C	HJ15-1	HC15-1	Ø68-Ø381
VIT-218	35	35	35	25391	32.6	2300	119	2.975	MS200C	HJ15-1	HC15-1	Ø130-Ø450
VIT-224	35	35	35	27838	32.6	1520	228	7.3	MS200C	HJ24-1	HC24-1	Ø152-Ø610
VIT-232	35	35	35	21924	32.6	920	400	30	MS200C	HJ24-1	HC32-1	Ø100-Ø810

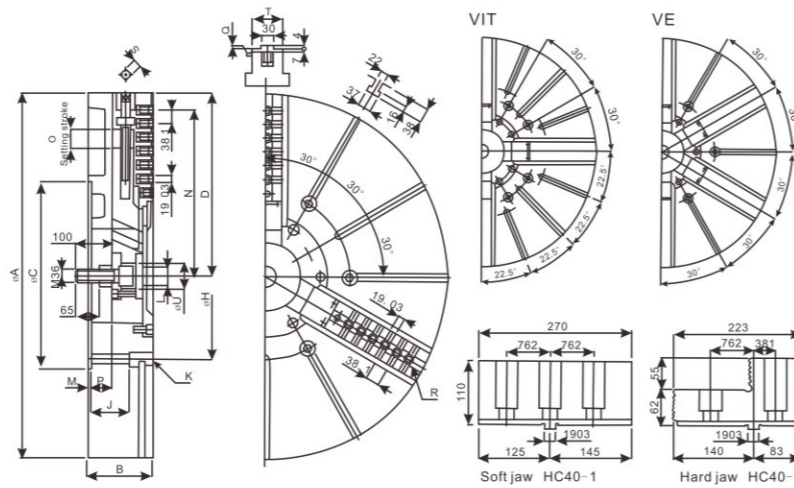
型式 Model	A	B	C	D	H	J	K	L	M	N max	O max	O min	p max	p min	Q	R	S	T	U	W	X	Y
VT-206	165	74	140	20	104.78	14	4-M10x70	21	5	38.7	15.25	9.25	104.6	84.6	4	12	36	31	M16x2.0	34	39	73
VT-208	210	85	170	25	133.35	20	6-M12x85	25	5	46.85	22.25	11.75	132	111	5	14	36	35	M20x2.5	38	41	95
VT-210	254	89	220	30	171.45	23	6-M16x85	34	5	51.1	30.75	11.25	158	133	5	16	36	40	M20x2.5	45	46	110
VT-212	304	106	220	30	171.45	23	6-M16x105	34	6	61	48.75	12.75	163	133	5	18	36	50	M20x2.5	50	54	130
VIT-212	304	106	220	30	171.45	23	6-M16x105	34	6	61	48.75	12.75	163	133	5	18	36	50	M30x3.5	50	54	130
VT-215	381	114	300	43	235	29	6-M20x115	6	77.5	50.25	23.25	104	69	2	25.5	55	50	M30x3.5	60	63	165	
VIT-218	450	114	300	43	235	29	6-M20x115	6	108	50.25	23.25	92	57	2	25.5	55	50	M30x3.5	60	63	165	
VIT-224	610	125	380	60	330.2	31	6-M24x115	6	125	93.5	24.5	97	62	7.5	25	55	65	M30x3.5	60	76	180	
VIT-232	810	135	380	80	330.2	26	6-M24x115	6	104.9	196.5	25.5	74	39	9	25	60	74	M30x3.5	60	97	210	

* 保留技術更改的權利，恕不另行通知 Subject to technology changes without prior information
* 非標需求可訂做 Non-standard requirements can be made

> V SERIES

大型中實油壓夾頭 (不包含連接板)

LARGE WEDGE TYPE NON THROUGH HOLE POWER CHUCK (WITHOUT ADAPTOR)



- 1. 適用於超大型工件，內徑或外徑之夾持。
- 2. 夾頭正面滑道處，加裝防護裝置，適合於立車上使用。
- 3. 具有單動調整底爪行程功能，可夾持大型不規則工件。
- Chucking operations of very large components external or internal clamping.
- Suitable for vertical lathe, due to the front protection of slide way.
- Master jaw with manual radial setting function.

型式 Model	爪數 Jaws	柱塞行程 Piston stroke (mm)	半徑爪行程+ (單動調整) Radial Jaw Stroke +(Manual setting) (mm)	最大拉杆推力 Max DB pull (kgf)	最大夾持力 Max clamping force (Kgf)	最大使用油壓力 Max oil pressure (kgf/cm ²)	最高回轉速 max r.p.m	重量 Weight (kg)	慣性矩 kg·m ²	適合油壓缸 Matched cylinders	適合硬爪 Matched HJ	適合生爪 Matched HC
40" V-240	3	57	23+ (30)	180	320	42.8	630	645	82	MS250C	HJ40-1	HC40-1
VIT-240	4						550	700	89			
50" V-250	3						550	890	168			
VIT-250	4	57	23+ (30)	180	320	42.8	400	940	177	MS250C	HJ40-1	HC40-1
VE-250	6						360	971	183			
63" VIT-263	4	60	24+ (40)	200	360	46.9	300	1700	518	MS250C	HJ40-1	HC40-1
VE-263	6						280	1800	548			
79" VE-279	6	60	24+ (40)	200	360	46.9	230	2850	1350	MS250C	HJ40-1	HC40-1

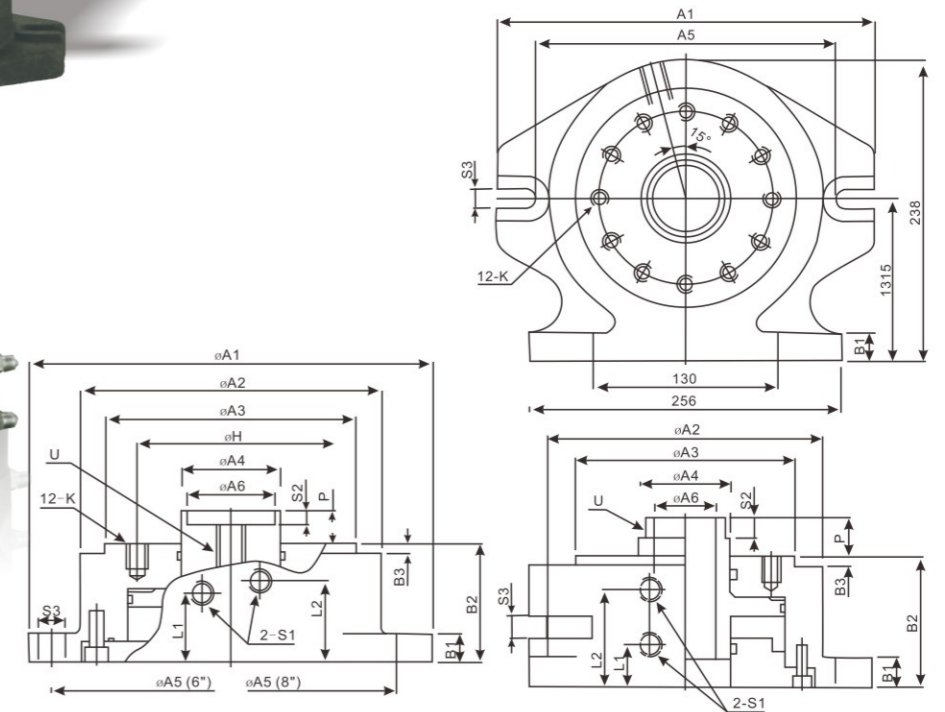
型式 Model	A	B	C	D max	H	J	K	L	M	N max	O	p max	p min	Q	R	S	T	U
40" V-240																		
VIT-240	1005	180	520	502	463.6	108	M24	M52 × 1.5	8	457	30	59	2	4	7-M24	19	85	72
50" 3V-250																		
VIT-250	1250	180	520	623	463.6	108	M24	M52 × 1.5	8	563	30	59	2	4	10-M24	19	85	72
VE-250																		
63" VIT-263	1600	220	720	796	647.6	144	M30	M52 × 1.5	8	738	40	82	22	6	13-M24	22	110	72
VE-263																		
79" VE-279	2000	238	720	996	647.6	159	M30	M52 × 1.5	8	914	40	100	40	6	17-M24	22	110	72

保留技術更改的權利，恕不另行通知 Subject to technology changes without prior information
非標準需求可訂做 Non-standard requirements can be made

> DV/DN SERIES

立式與立臥式油壓夾頭系列

VERTICAL AND VERTICAL/HORIZONTAL STATIONARY POWER CHUCKS



- 1. 適用於立式、銑削與鑽孔工作。
- 2. 立臥式中空油壓夾頭具有貫通孔徑，可做長工件夾持，並且可做臥式加工工作。
- Suitable for vertical milling and drilling operations.
- With large through-hole, Vertical / horizontal power chucks does not only clamp the long workpiece but also the horizontal holding.

型式 Model	活塞直徑 Piston Dia (mm)	活塞面積 Eff. piston area cm ² 推側 Push (cm ²) 拉側 Pull (cm ²)	柱塞行程 (mm) Piston stroke	最大容許推力 Max DB pull (Kgf) 推測 KN (kgf) 拉測 KN (kgf)	重量 Weight (Kg)	最大使用油壓力 Max oil pressure (kgf/cm ²)	適合夾頭 chucks
DV-6	Ø115	104 / 78.5	20	1900 / 1400	12	20	V-206 V-208
DV-8	155	187 / 148.6	21	3600 / 2800	21	20	V-210 V-212
DN-8	155	148.6 / 148.6	17	2800 / 2800	28.5	20	N-208

型式 Model	A1	A2	A3	A4	A5	A6	B1	B2	B3	L1	L2	H	K	p max	U max	S1	S2	S3	U	參考圖 Ref
DV-6	Ø220	168	140	55	Ø200	49	16	65.5	5.5	38	45	104.78	12-M10 × 16L	18	-2	PT1/4"	7.6	2-Ø15	M16 × P2.0	Fig-1
DV-8	290	210	170	70	242	58	24	86	5.5	23	65	133.35	12-M12 × 18L	20	-1	PT1/4"	5.5	2-16	M16 × P2.0	Fig-1
DN-8	293	213	170	70	242	52	24	100	5.5	32.5	74.5	133.35	12-M12 × 18L	30.4	13.4	PT1/4"	16	4-17	M60 × P2.0	Fig-2

保留技術更改的權利，恕不另行通知 Subject to technology changes without prior information
非標準需求可訂做 Non-standard requirements can be made

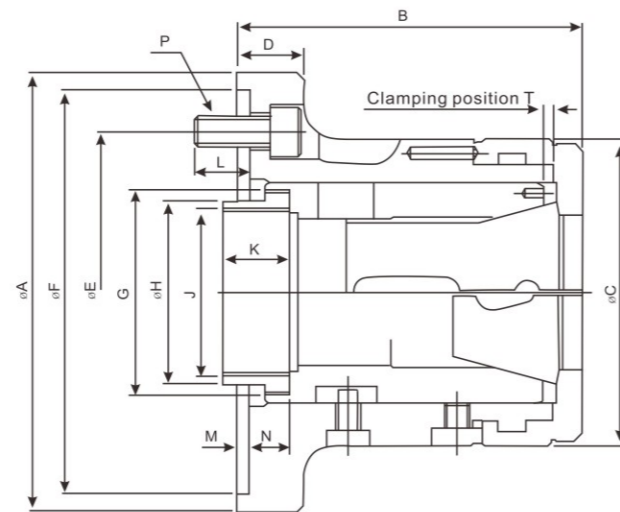
> CR SERIES

筒夾夾頭



COLLET CHUCKS FOR CYLINDRICAL CENTER MOUNT

- 1.筒夾夾頭可快速拆卸止檔蓄，適用於NC/CNC車床加工素材。
- 2.棒材能經由夾頭通孔進行送料作業。
- 3.可依工作形狀及尺寸來選擇適合的筒夾。
- Collet chucks with bayonet catch are mainly used for chucking bar work on NC / CNC lathes.
- The bar can be fed in through the chuck.
- Profiles can also be chucked with the appropriate collets.



型式 Model	適合主軸 Matched spindle	容許棒材直徑 Bar Capacity (mm)	套筒行程 Sleeve Stroke (mm)	重量 (kg) Weight	最大容許推力 Max DB pull KN(kgf)	最大夾持力 Max clamping force (kgf)	最高回轉速 Max R.P.M
CR42-140	140	42	7	6.2	25(2549)	55(5608)	6,000
CR60-170	170	60	7	11.5	30(3059)	65(6628)	5,000
CR60-220	220	60	7	15.5	30(3059)	65(6628)	5,000

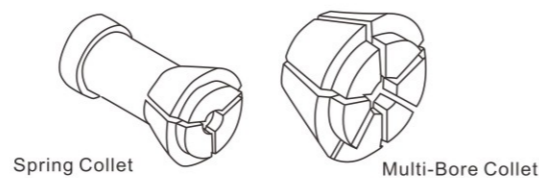
型式 Model	A(h6)	B	C	D	E	F(H6)	G	H	Jmax	K	L	M	N	P	T
CR42-140	155	114	100	23	133.35	140	M66 × P1.5	66	M55 × P2.0	25	18	6	11.9	3-M10	3.1
CR60-170	185	139	130	30	133.35	170	M90 × P1.5	80	M74 × P2.0	30	18	6	17.9	6-M12	3.1
CR60-220	235	141	130	32	171.45	220	M90 × P1.5	80	M74 × P2.0	30	20	6	19.09	6-M16	3.1

使用筒夾須符合 DIN 6343規範

筒夾筒崎圖

夾持範圍 / Clamping range

CHUCK	NO.	CAT.NO.	MULTIBORE			SPRING COLLET			
			○	□	◇	CAT.NO.	○	□	
CR42	M-673		42	36	30	173E/4728	42	36	30
CR60	M-677		60	52	42	185E/4291	60	52	42



保留技術更改的權利，恕不另行通知 Subject to technology changes without prior information
 非標需求可訂做 Non-standard requirements can be made

> CRA SERIES

筒夾夾頭



COLLET CHUCKS FOR SHORT TAPER MOUNT

- 1.筒夾夾頭可快速拆卸止檔蓄，適用於NC/CNC車床加工棒材。
- 2.棒材能經由夾頭通孔進行送料作業。
- 3.可依工作形狀及尺寸來選擇適合的筒夾。
- Collet chucks with bayonet catch are mainly used for chucking bar work on NC / CNC lathes.
- The bar can be fed in through the chuck.
- Profiles can also be chucked with the appropriate collets.

型式 Model	適合主軸 Matched spindle	容許棒材直徑(mm) Bar Capacity	套筒行程(mm) Sleeve Stroke	重量 (kg) Weight	最大容許推力 Max DB pull KN(kgf)	最大夾持力 Max clamping force (kgf)	最高回轉速 Max R.P.M
CR26A4	A2-4	26	5	4.5	20 (2039)	44 (4486)	7,000
CR30A4	A2-4	30	5	4.1	20 (2039)	44 (4486)	7,000
CR42A5	A2-5	42	7	6.2	25 (2549)	55 (5608)	6,000
CR42A6	A2-6	42	7	8.2	25 (2549)	55 (5608)	6,000
CR52A6	A2-6	52	7	12.2	30 (3059)	65 (6628)	5,000
CR60A6	A2-6	60	7	13	30 (3059)	65 (6628)	5,000
CR80A8	A2-8	80	7	21	35 (3568)	73 (7443)	4,000

型式 Model	A	B	C	D	E	F	G	H	Jmax	k	N	P	T
CR26A4	112	103.5	85	30	82.55	63.513	M50 × P1.5	45	M40 × P1.5	15	21.7	3-M10	2.3
CR30A4	112	103.5	85	30	82.55	63.513	M50 × P1.5	45	M50 × P1.5	15	21.7	3-M10	2.3
CR42A5	135	124	100	27	104.78	82.563	M66 × P1.5	60	M55 × P2.0	25	27.4	4-M10	3.1
CR42A6	170	124	100	32	133.35	106.375	M66 × P1.5	66	M60 × P2.0	22	27.4	4-M12	3.1
CR52A6	170	144	130	27	133.35	106.375	M90 × P1.5	80	M60 × P2.0	30	29.9	4-M12	3.1
CR60A6	170	145	130	27	133.35	106.375	M90 × P1.5	80	M74 × P2.0	30	29.9	4-M12	3.1
CR80A8	220	170	156	35	171.45	139.719	M114 × P2.0	99	M90 × P2.0	27.5	32.4	6-M16	6.1

保留技術更改的權利，恕不另行通知 Subject to technology changes without prior information
 非標需求可訂做 Non-standard requirements can be made

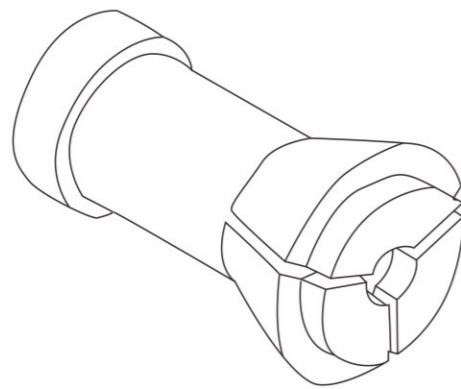
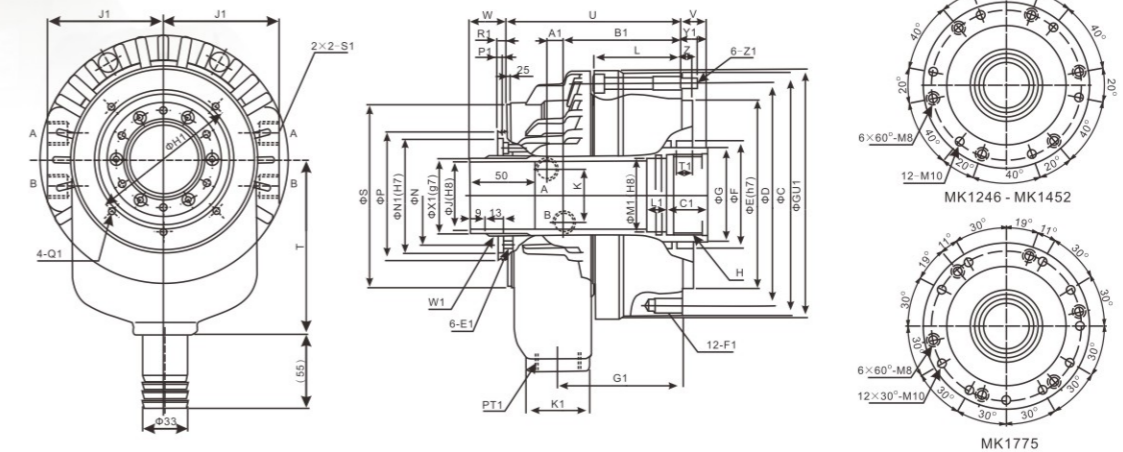
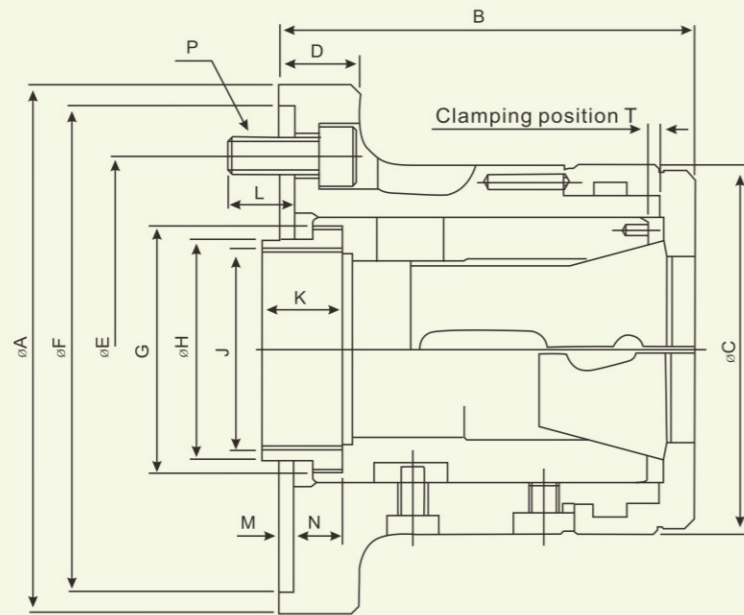
> MK SERIES

超高速薄型中空回轉油壓缸

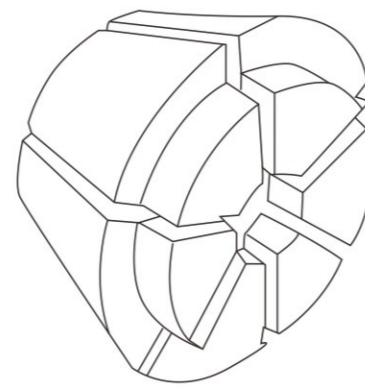


HIGH SPEED AND SHORT THROUGH HOLE ROTARY HYDRAULIC CYLINDER

- 1. 小型輕量：長度縮短30%，高速旋轉時的性能更穩定，減輕主軸的負載。
- 2. 安全構造，內附逆止開機構，確保異常斷電時，壓力立即保持。
- 3. 新形式，安裝時可由對方以螺絲鎖固。
- The compact hydraulic cylinder which is shorten the length about 30% and light weight can reduce the spindle loading while running in high speed.
- Built-in check valve in safety auto lock and pressure relief valve in case of power failure occurs.
- New model developed for rear locking installation.



Spring Collet



Multi-Bore Collet

夾持範圍 / Clamping range

CHUCK		MULTIBORE			SPRING COLLET			
NO.	CAT.NO.	○	○	□	CAT.NO.	○	○	□
CR26	M-667	26	22	18	161E/8744	30	26	18
CR30	M-669	30	26	21	163E/4249	30	26	21
CR42	M-673	42	36	30	173E/4728	42	36	30
CR60	M-677	60	52	42	185E/4291	60	52	42
CR80	J-660	80	69	56	193E/H-47	80	69	56

* 保留技術更改的權利，恕不另行通知 Subject to technology changes without prior information
 * 非標需求可訂做 Non-standard requirements can be made

型式 Model	活塞直徑 Piston Dia (mm)	活塞面積 Eff.piston area cm ²		柱塞行程 Piston stroke (mm)	最大拉杆推力 Max DB pull (kgf)		最大使用油壓力 Max oil pressure (kgf/cm ²)	最高回轉速 Max R.P.M	慣性矩 kg·m ²	總流量 Total Leakage (l/min)	重量 Weight (kg)
		推側Push(cm ²)	拉側Pull(cm ²)		推測KN (kgf)	拉測KN (kgf)					
MK-1246	128	102.6	91.4	16	43.6(4466)	38.9(3967)	4.5(45.9)	8000	0.017	3.1	8.6
MK-1452	145	133	122.6	22	26.5(5761)	52.1(5313)	4.5(45.9)	6500	0.028	3.9	12
MK-1775	170	166	152	25	70.7(7209)	64.7(6587)	4.5(45.9)	5500	0.060	4.5	17.8

型式 Model	C	D	E	F	G	H	J	K	L	N	P	S	T	U	V max	V min	W max	W min	Z
MK-1246	162	147	130	75	65	M55×2.0	46	40	58	64	85	116	120	120	13	-3	44	28	8
MK-1452	184	165	140	80	70	M60×2.0	52	40	66	72	96	135	130	130	19	-3	47	25	8
MK-1775	212	195	160	105	90	M85×2.0	75	46	71	98	121	164	160	157	22	-3	50	25	8

型式 Model	A1	B1	C1	E1	F1	G1	H1	J1	K1	L1	M1	M1	N1	P1	Q1	R1	S1	T1	U1	W1	X1	Y1	Z1
MK-1246	8.5	79.5	25	M6×10L	M10×20L	84	98	76	47	15	50	50	76	4	M5×6L	9	PT3/8	12	165	M52×1.5	50	15	M8
MK-1452	9	88	30	M6×7L	M10×20L	93	110	86	47	15	55	55	85	4	M6×6L	7	PT3/8	12	184	M58×1.5	56	12	M8
MK-1775	17.5	99	30	M6×13L	M10×20L	110	155	100	47	15	80	80	108	4	M6×10L	7	PT1/2	12	216	M84×2.0	81	18	M10

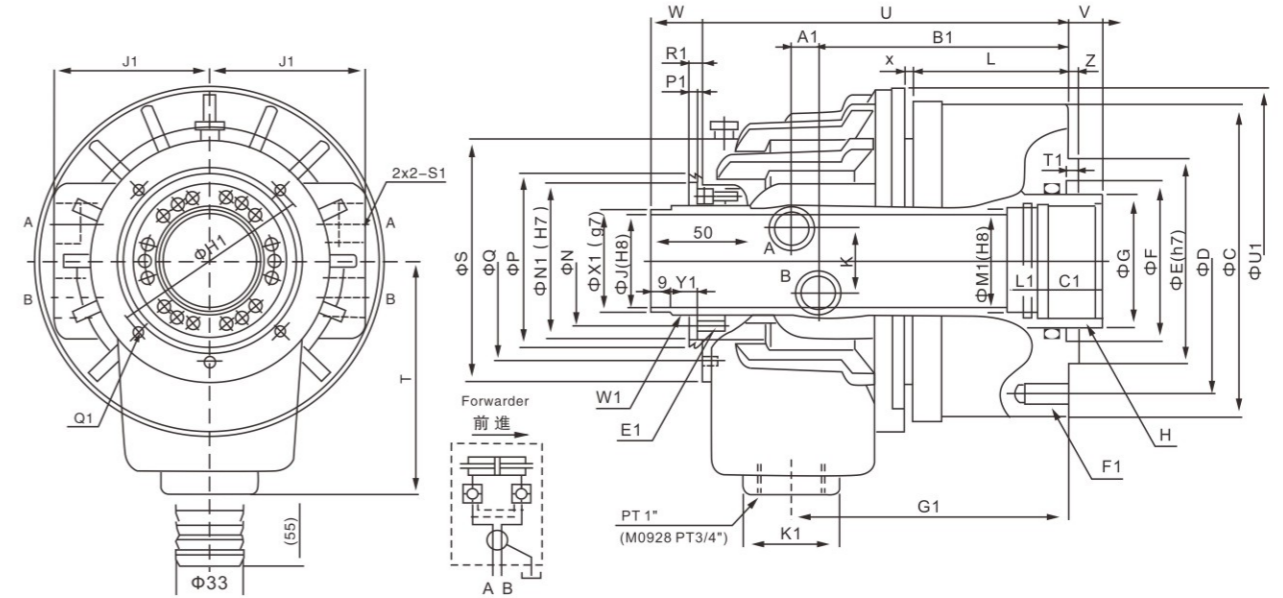
* 保留技術更改的權利，恕不另行通知 Subject to technology changes without prior information
 * 非標需求可訂做 Non-standard requirements can be made

> M

M 高速中空回轉油壓缸

M HIGH SPEED THROUGH-HOLE ROTARY HYDRAULIC CYLINDER.

- 小型輕量：比起傳統的製品，實現小型(MAX 95mm短縮)，輕量 (MAX 4.5kg減輕化)，高速迴轉時的性能更穩定、更減輕機械的負擔。
- 更大的貫通孔：比起以往的製品約有提高20%的貫通孔，可使機械的能力充分的活用。
- 安全構造：藉止回閥的內藏保持推力的構造。
- Compact and light weight : Comparing with the regular product, it is compact (reduced to MAX 95mm) and lighter (weighted MAX 4.5kg). It's more stable to reduce the burden of the machinery at high speed turning.
- The largest bore : Comparing with the regular product, it has about 20% larger bore diameter for utilizing the capacity of machinery.
- The safety structure : It can retain the gripping force by check valve.



型式 / Model 規格 / Spec.	活塞直徑 Piston Dia (mm)	活塞面積 推側/拉側 Piston Area Push/Pull (cm ²)	最大拉杆力 推側/拉側 Max. DB Force Push/Pull KN(kgf)	活塞行程 Piston Stroke (mm)	最大油壓力 Max. oil Pressure MPa(Kgf/cm ²)	最高回轉速 Max R.P.M	慣性矩 kg·m ²	重量 Weight (kg)	總流量 L/min
M0928	90	53.2 / 48.3	19.9(2029) / 18(1835)	10	4.0 (40.8)	8000	0.006	5.5	3
M1036	105	71 / 68.5	26(2651) / 25(2549)	15	4.0 (40.8)	8000	0.011	8.6	3
M1038	105	71 / 66	26(2651) / 24.5(2498)	15	4.0 (40.8)	8000	0.011	8.5	3
M1236	125	100 / 89	38(3875) / 33(3365)	15	4.0 (40.8)	7000	0.019	13	3
M1246	125	100 / 89	38(3875) / 33(3365)	15	4.0 (40.8)	7000	0.019	12	3
M1546	155	161 / 154	60(6118) / 57.8(5894)	22	4.0 (40.8)	6200	0.056	18	3.9
M1552	155	161 / 150	60(6118) / 56(5710)	22	4.0 (40.8)	6200	0.052	16.8	3.9
M1868	180	198 / 197	74(7546) / 73.5(7495)	25	4.0 (40.8)	4700	0.098	28	4.2
M1870	180	198 / 183	74(7546) / 69(7036)	25	4.0 (40.8)	4700	0.095	26.5	4.2
M1875	180	198 / 183	74(7546) / 69(7036)	25	4.0 (40.8)	4700	0.095	26	4.2
M1878	180	198 / 183	74(7546) / 69(7036)	25	4.0 (40.8)	4700	0.095	25.5	4.2
M2078	205	262 / 234	98(9993) / 88(8973)	23	4.0 (40.8)	3800	0.15	36.5	4.5
M2085	205	252 / 234	94(9585) / 88(8973)	30	4.0 (40.8)	3800	0.15	37.5	4.5
M2091	205	252 / 234	94(9585) / 88(8973)	30	4.0 (40.8)	3800	0.15	37	4.5
M2511	250	348 / 336	124(12644) / 120(12236)	23	4.0 (40.8)	2800	0.45	57	7
M2511S	250	348 / 336	124(12644) / 120(12236)	23	4.0 (40.8)	2800	0.41	53	7

* 保留技術更改的權利，恕不另行通知 Subject to technology changes without prior information
* 非標準需求可訂做 Non-standard requirements can be made

型式 Model 尺寸 Size	A1	B1	C1	E1	F1	G1	H1	J1	K1	L1	M1	N1	P1	Q1	R1	S1	T1	U1	W1	X1	Y1
M0928	9	108	25	8-M6x10	6-M8x15	110	76	58	44	15	34	53	4	4-M4x7	5	PT 1/4"	6	116	M34x1.5	32	15
M1036	11	120.5	25	6-M5x10	6-M10x17	126	88	68	53	15	38	64	4	6-M5x12	5	PT 3/8"	6	136	M44x1.5	42	14
M1038	11	120.5	25	6-M5x10	6-M10x17	126	88	68	53	15	40	64	4	6-M5x12	5	PT 3/8"	6	136	M44x1.5	42	14
M1236	11	126.5	25	6-M6x12	12-M10x20	135	98	76	47	15	38	76	4	4-M5x12	6	PT 1/2"	6	169	M52x1.5	50	14
M1246	11	126.5	30	6-M6x12	12-M10x20	135	98	76	47	15	50	76	4	4-M5x12	6	PT 1/2"	6	169	M52x1.5	50	14
M1546	11	133.5	30	6-M6x12	12-M10x20	145	110	86	47	15	50	85	4	4-M6x12	7	PT 1/2"	6	188	M58x1.5	56	13.5
M1552	11	133.5	30	6-M6x12	12-M10x20	145	110	86	47	15	55	85	4	4-M6x12	7	PT 1/2"	6	188	M58x1.5	56	13.5
M1868	17.5	152.5	35	6-M6x12	12-M10x20	166.5	155	101	47	15	70	108	4	4-M6x12	7.5	PT 1/2"	6	215	M84x2	81	12.5
M1870	17.5	152.5	35	6-M6x12	12-M10x20	166.5	155	101	47	15	75	108	4	4-M6x12	7.5	PT 1/2"	6	215	M84x2	81	12.5
M1875	17.5	152.5	35	6-M6x12	12-M10x20	166.5	155	101	47	15	80	108	4	4-M6x12	7.5	PT 1/2"	6	215	M84x2	81	12.5
M1878	17.5	152.5	35	6-M6x12	12-M10x20	166.5	155	101	47	20	82	108	4	4-M6x12	7.5	PT 1/2"	6	215	M84x2	81	12.5
M2078	21	166.5	35	6-M6x12	12-M12x24	182	165	110	47	20	84	120	4	4-M6x12	7	PT 1/2"	6	240	M99x2	96	20
M2085	21	166.5	35	6-M6x12	12-M12x24	182	165	110	47	20	89	120	4	4-M6x12	7	PT 1/2"	6	240	M99x2	96	13
M2091	21	166.5	35	6-M6x12	12-M12x24	182	165	110	47	15	95	120	4	4-M6x12	7	PT 1/2"	6	240	M99x2	96	13
M2511	27	184.5	45	6-M6x12	12-M16x32	197	206	129	55	20	123	160	5	4-M6x12	7	PT 1/2"	6	294	-	134.6	-
M2511S	21	169.5	45	6-M6x12	12-M16x32	192	206	132	55	20	123	160	5	4-M6x12	7	PT 1/2"	6	294	-	134.6	-

型式 Model 尺寸 Size	C	D	E	F	G	H	J	K	L	N	P	Q	S	T	U	V max.	V min.	W max.	W min.	X	Z
M0928	120	100	80	65	44	M38x1.5	28	25	63	44	59	76	90	105	151	14	4	35	25	3	5
M1036	136	115	100	65	48	M42x1.5	36	32	71	55	73	88	104	115	174.5	15	0	39	24	2.5	5
M1038	136	115	100	65	50	M44x1.5	38	32	71	55	73	88	104	115	174.5	15	0	39	24	2.5	5
M1236	155	130	100	80	65	M42x1.5	36	36	76	64	85	98	118	114	179	15	0	40	25	4	5
M1246	155	130	100	80	65	M55x2	46	36	76	64	85	98	118	114	179	15	0	40	25	4	5
M1546	190	170	130	85	65	M55x2	46	36	84	73	96	114	137	130	190.5	22	0	47.5	25.5	3.5	5
M1552	190	170	130	85	70	M60x2	52	36	84	73	96	114	137	130	190.5	22	0	47.5	25.5	3.5	5
M1868	215	190	160	120	85	M75x2	68	36	95	98	121	140	165	159	225	25	0	50	25	3	5
M1870	215	190	160	120	95	M78x2	70	36	95	98	121	140	165	159	225	25	0	50	25	3	5
M1875	215	190	160	120	95	M85x2	75	36	95	98	121	140	165	159	225	25	0	50	25	3	5
M1878	215	190	160	120	95	M87x2	78	36	95	98	121	140	165	159	225	25	0	50	25	3	5
M2078	240	215	180	140	110	M90x2	78	36	104	108	138	158	182	177	248	23	0	55	32	3	5
M2085	240	215	180	140	110	M93x2	85	36	104	108	138	158	182	177	248	30	0	55	25	3	5
M2091	240	215	180	140	110	M100x2	91	36	104	108	138	158	182	177	248	30	0	55	25	3	5
M2511	310	275	230	166	140	M130x2	117.5	36	101	148	178	190	232	215	290	24	1	38	15	3	6
M2511S	310	275	230	166	140	M130x2	117.5	36	101	148	178	190	232	215	258	24	1	38	15	3	6

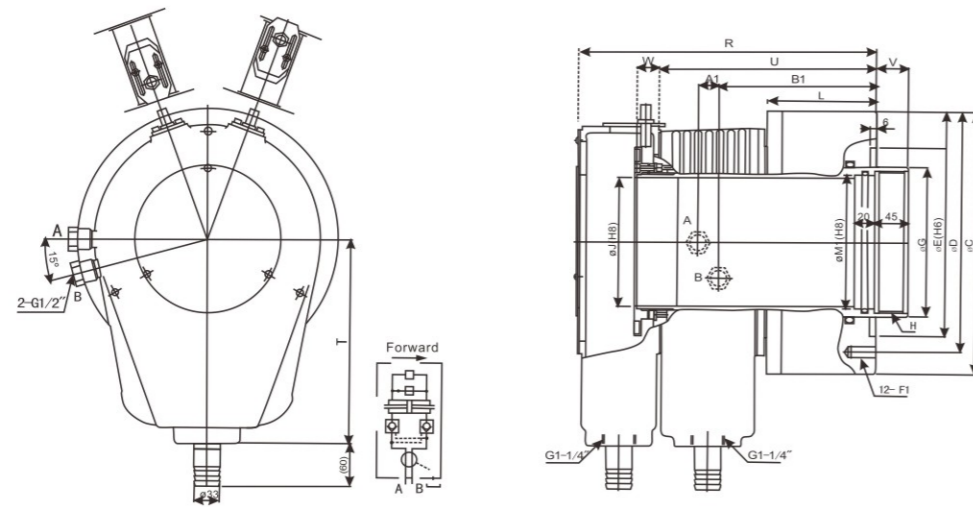
* 保留技術更改的權利，恕不另行通知 Subject to technology changes without prior information
* 非標準需求可訂做 Non-standard requirements can be made

> ML-CM.B

超大孔徑回轉油壓缸

EXTRA LARGE THROUGH HOLE ROTAY HYDRAULIC CYLINDER

- 1. 適用於大孔徑油壓夾頭使用。
 - 2. 使用特殊鋁合金鋼體，超輕量質設計減少主軸負荷。
 - 3. 內藏逆止閥機構確保推力保持。
 - 4. 超大通孔設計，搭配集水槽及行程檢知裝置。
 - 5. 無附近接開關及安裝螺絲。
- Matching for large bore power chucks.
 - Special aluminum alloy steel body, light weight for reducing the spindle loading.
 - Within check valves to maintain the thrust force.
 - Extra large bore design, equipped with coolant collector and detective plate.
 - The proximity switches and mounting bolts are extra option.



型式 Model	活塞直徑 Piston Dia (mm)	活塞面積 Eff.piston area cm ²		柱塞行程 Piston stroke (mm)	最大拉杆推力 Max DB pull (kgf)		最大使用油壓力 Max oil pressure (kgf/cm ²)	最高回轉速 Max R.P.M	慣性矩 kg·m ²	重量 Weight (kg)	總流量 L/min
		推側 Push	拉側 Pull		推測KN (kgf)	拉測KN (kgf)					
ML2816CM28B	285	394	350	42	116.8(11910)	106.8(10584)	3.3(33.6)	2000	0.85	68	9
ML3320CM33B	335	515.7	416.9	42	152.9(15591)	136.9(13960)	3.3(33.6)	1600	1.09	103	10

型式 Model	C	D	E	G	H	J	L	R	T	U	V max	V min	W max	W min	A1	B1	F1	M1
ML2816CM28B	335	280	240	190	M180 × 3.0	166.5	140	382	260	279	41	-1	67	25	18	202	M16 × 32L	170
ML3320CM33B	390	320	280	230	M215 × 3.0	205	147	392	260	292	41	-1	67	25	18	210	M20 × 32L	210

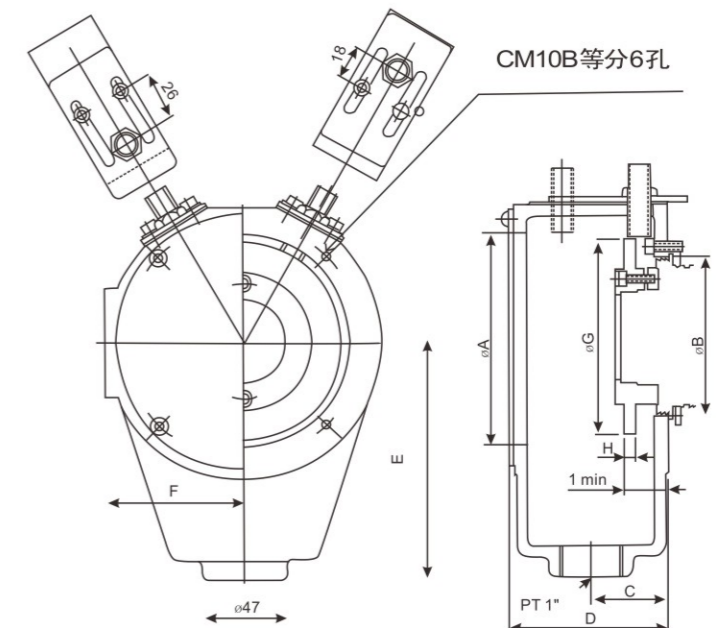
保留技術更改的權利，恕不另行通知 Subject to technology changes without prior information
 非標需求可訂做 Non-standard requirements can be made

> CM.B SERIES

油壓回轉缸集水盒

HYDRAULIC CYLINDERS COOLANT COLLECTORS

- 1. 可安裝行程確認裝置及油水回收。
- 2. 近接開關須另購。
- Hydraulic cylinders coolant collectors. Compact and light weight, they feature bore sizes up to 20% large than Conventional Cylinders.
- Precision finished piston bores and cool running rotary unions are.
- included for years of trouble-free performance.
- The proximity switches are extra option.



型式 Model	A	B	C	D	E	F	G	H	I min	適合油壓缸 Matched cylinders	重量(kg) Weight
CM09B	85	67	33	70	105	55.5	77	5	24	M0928(H0928)	0.85
CM10B	118	75	42	84	131	76	107	5	22	M1036(H1036)	1.6
CM12B	118	87	42	84	131	76	107	5	23	M1236(H1236) M1246(H1246)	1.6
CM15B8	118	98	42	84	131	76	107	5	25.5	M1546(H1546) M1552(H1552)	1.6
CM18B	158	123	44	88.5	151	96	147	5	23	M1868(H1868) M1870(H1870) M1875(H1875) M1878(H1878)	2
CM20B	158	140	44	88.5	151	96	147	5	23	M2085(H2085) M2091(H2091)	2.1
CM25B	198	177	45	90	180	118	192	12	35	M2511(H2511)	2.4

保留技術更改的權利，恕不另行通知 Subject to technology changes without prior information
 非標需求可訂做 Non-standard requirements can be made

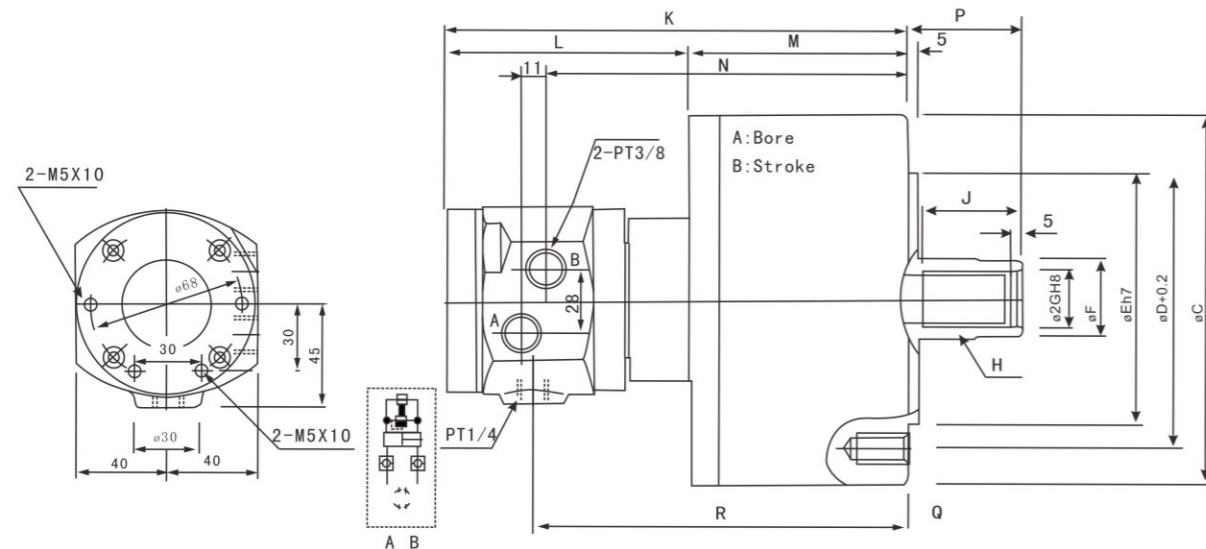
> MS SERIES

中實回轉油壓缸
(含逆止閥)

NON THROUGH HOLE ROTARY HYDRAULIC CYLINDER (WITH VALVES)

Built-in safety check valves.

- 1. 附逆止閥。



型式 Model	A	B	C	D	E	F	G	H	J	K	L	M	N	P _{max}	P _{min}	Q	R
MS105	105	20	135	100	80	30	21	M20×2.5	35	197	108	89	152	45	25	6-M10×20	158
MS125	15	25	160	130	110	35	25	M24×3.0	44	205	108	97	160	51	26	6-M12×24	166
MS150	150	30	190	130	110	45	31	M30×3.5	45	214	108	106	169	26	26	12-M12×24	175
MS200	200	35	245	145	120	55	37	M36×4.0	60	228	108	120	183	69	34	12-M16×30	189

型式 Model	活塞面積 Eff.piston area cm ² 推側 Push 拉側 Pull	最大拉桿推力 Max DB pull (kgf) 拉測 pull KN (kgf)	柱塞行程 Piston stroke (mm)	最高回轉速 Max R.P.M	最大使用油壓力 Max oil pressure (kgf/cm ²)	總流量 (l/min)	慣性矩 kg·m ²	重量 Weight (kg)
MS105	86 79	29(2957)	20	6000	4.0(40.8)	0.8	0.0125	7.1
MS125	122 113	42(4283)	25	6000	4.0(40.8)	0.8	0.0225	10
MS150	176 160	60(6118)	30	5500	4.0(40.8)	0.8	0.0475	13.5
MS200	314 290	108(11013)	35	5500	4.0(40.8)	0.8	0.0975	22

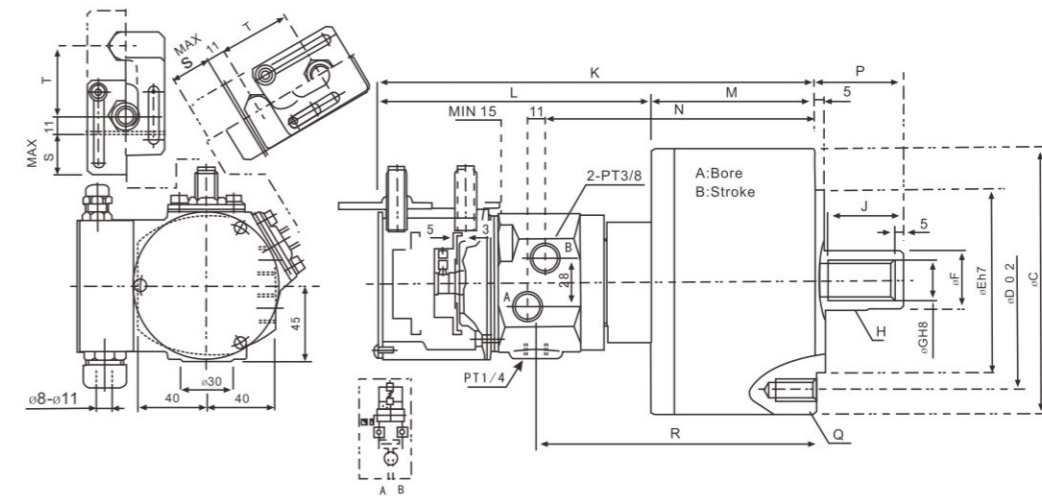
保留技術更改的權利，恕不另行通知 Subject to technology changes without prior information
非標需求可訂做 Non-standard requirements can be made

> MS-C SERIES

中實回轉油壓缸
(含逆止閥、檢知裝置)

NON THROUGH HOLE ROTARY HYDRAULIC CYLINDER (WITH VALVES AND SWITCHES)

- 1. 附逆止閥。
- 2. 檢出安全裝置。
- 3. 近接開關須另購。
- 拉桿推力：油壓力4.0MPa (40.8 kgf/cm²)
- 總流量：油壓力3.0MPa (30.6 kgf/cm²)及 度50° C
- 近接開關：規格BESS 16-329-E4-Y (BALLUFF) DC 12/24V 200mA NPN
- Built-in safety check valves and detective plate.
- The proximity switches are extra option.
- Draw bar pull force : Pressure 4.0 MPa(40.8kgf / cm²)
- Total leakage : Pressure 3.0 MPa(30.6kgf / cm²) and oil temperature 50°C
- Proximity switch : Model BESS 16-329-E4-Y (BALLUFF) DC 12 / 24V 200mA NPN



型式 Model	A	B	C	D	E	F	G	H	J	K	L	M	N	p _{max}	p _{min}	Q	R	S	T
MS105C	105	20	135	100	80	30	21	M20×2.5	35	257	168	89	152	45	25	6-M10×20	158	23	46
MS125C	125	25	160	130	110	35	25	M24×3.0	44	265	168	97	160	51	26	6-M12×24	166	23	46
MS125C	125	35	160	130	110	35	25	M24×3.0	44	269	168	101	164	57	22	6-M12×24	170	23	46
MS150C	150	30	190	130	110	45	31	M30×3.5	45	274	168	106	169	56	26	12-M12×24	175	23	46
MS200C	200	35	245	145	120	55	37	M36×4.0	60	288	166	120	183	69	34	12-M16×30	189	28	46

型式 Model	活塞面積 Eff.piston area cm ² 推側 Push 拉側 Pull	最大拉桿推力 Max DB pull (kgf) 拉測 pull KN (kgf)	柱塞行程 Piston stroke (mm)	最高回轉速 Max R.P.M	最大使用油壓力 Max oil pressure (kgf/cm ²)	總流量 Total Leakage (l/min)	慣性矩 kg·m ²	重量 Weight (kg)
MS105C	84 79	29(2957)	20	6000	4.0(40.8)	0.8	0.0125	7.6
MS125C	120 113	42(4283)	25	6000	4.0(40.8)	0.8	0.022	10.5
MS125C	120 113	42(4283)	35	6000	4.0(40.8)	0.8	0.022	10.5
MS150C	174 160	60(6118)	30	5500	4.0(40.8)	0.8	0.047	14
MS200C	312 290	108(11013)	35	5500	4.0(40.8)	0.8	0.097	22.5

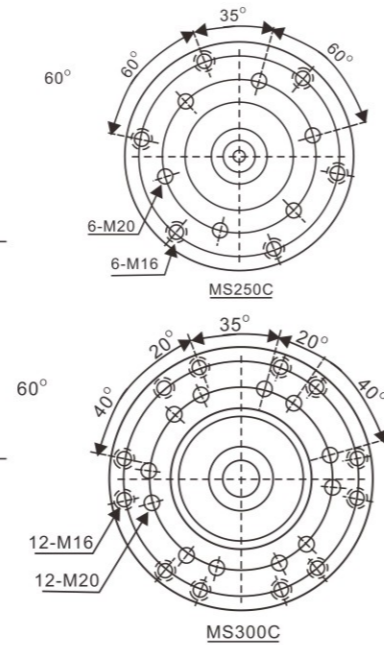
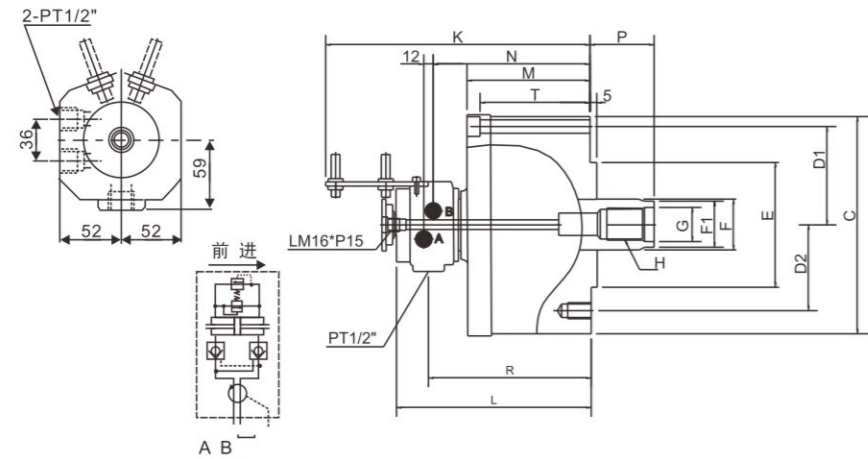
保留技術更改的權利，恕不另行通知 Subject to technology changes without prior information
非標需求可訂做 Non-standard requirements can be made

> MS250C/MS300C SERIES

中實回轉油壓缸
(含逆止閥、檢知裝置)

NON THROUGH-HOLE ROTARY HYDRAULIC CYLINDER
(VALVE AND SWITCH BRACKETS INCLUDED)

- 1.貫穿孔可加裝回轉接頭以利吃氣、冷卻液等作業。
- 2.可從前端或後端安裝。
- 3.附安全逆止閥及檢出裝置(近接開關須另購)。
- Through-hole for coolant, oil or air with thread for rotary unit.
- Mounting from the rear or front side.
- Built-in safety check valves and bracket for proximity switch.
(The proximity switches are extra option.)



型式 Model	C	D1	D2	E (h7)	F	F1	G	H	J	K	L	M	N	p max	p min	Q1	Q2	R	T
MS250C	300	275	220	160	65	62	44	M42 x 3.0	60	356	267	177	220	85	25	6-Ø17	6-M20	226	160
MS300C	355	330	270	210	75	70	50	M48 x 3.0	70	359	270	182	223	85	25	12-Ø17	12-M20	229	165

型式 Model	活塞直徑 Piston Dia. (mm)	活塞面積 Eff.piston area cm ²		最大拉桿推力 Max DB pull (kgf)		柱塞行程 Piston stroke (mm)	最高回轉速 Max R.P.M	最大使用油壓力 Max oil pressure (kgf/cm ²)	總流量 (l/min)	慣性矩 kg·m ²	重量 Weight (kg)
		推側 Push	拉側 Pull	推側KN (kgf)	拉側KN (kgf)						
MS250C	250	481.5	453.6	227(23147)	214(21822)	60	2000	50	2	0.87	78
MS300C	300	697.5	658.6	262(26716)	247(25186)	60	1500	40.8	3	1.60	106

- 拉桿推力: 油壓力4.0 Mpa (40.8kgf/cm²)
- 總流量: 油壓力3.0 Mpa (30.6kgf/cm²)及溫度50°C
- 近接開關: 規格BESS 16-329-E4-Y (BALLUFF)DC 12/24V 200mA NPN

保留技術更改的權利, 恕不另行通知 Subject to technology changes without prior information
非標準需求可訂做 Non-standard requirements can be made

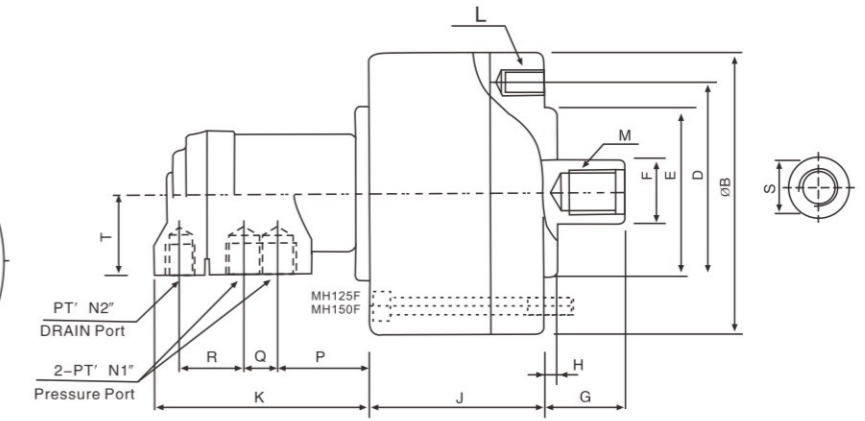
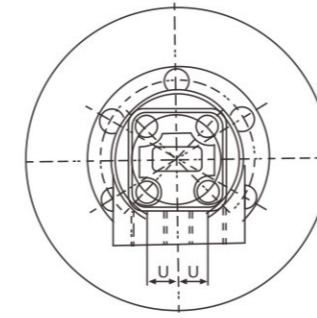
> MH SERIES

中實回轉油壓缸

NON THROUGH HOLE ROTARY
HYDRAULIC CYLINDER



- 1.質密、低慣性、輕形: 此油壓缸為鋁合金製造而成, 為輕形之設計, 可以減輕機器主軸之負荷。
- 2.高速運轉: 此油壓缸之平衡設計為輕形且質密, 于高速運轉可以維持外形之均勻平衡.高壽命:
- 3.由于高品質之油壓缸油封及高精度之表面粗糙度的零件, 可確保此油壓之高壽命。
- MH125F與MH150F為後鎖型式, 便于安裝及拆卸
- Compact, low inertia, light weight cylinder :Manufactured by aluminium alloy, this cylinder is light weight design to reduce the loading of spindle.
- High speed :This balanced design cylinder is light weight, compact and maintains outstanding stability during high speed operation.
- Long life :High quality cylinder seals and high accuracy surface finish on components to ensure the long life of these cylinders.
- MH125F and MH150F is back mounting type, easy to mount or dismount.



型式 Model	A I.D.	B	D	E (h7)	F	G max	H min	J	K	L	M	N1	N2	P	Q	R	T	U	
MH80	80	115	90	65	25	45	30	6	73.5	103	M8 x 12.5 16	M16 x 2.0 x 32	3/8"	1/4"	45	15.5	30.5	38	13
MH100	100	135	100	80	25	45	25	6	88.5	103	M10 x 1.5 19	M16 x 2.0 x 32	3/8"	1/4"	45	15.5	30.5	38	13
MH125(F)	125	160	130	110	30	51	26	6	95.5	103	M12 x 1.75 18	M20 x 2.5 x 32	3/8"	1/4"	45	15.5	30.5	38	13
MH150(F)	150	190	130	110	45	50	20	6	107	103	M12 x 1.75 20	M30 x 3.5 x 35	3/8"	1/4"	45	15.5	30.5	38	13

型式 Model	活塞面積 Eff.piston area cm ²		最大拉桿推力 Max DB pull (kgf)	柱塞行程 Piston stroke (mm)	最高回轉速 Max R.P.M	最大使用油壓力 Max oil pressure (kgf/cm ²)	慣性矩 kg·m ²	重量 Weight (kg)
	推側 Push	拉側 Pull						
MH80	47.7	42.8	13.9 (1417)	15	6000	35	0.005	5.1
MH100	75.4	70.5	22.9 (2335)	20	5500	35	0.0125	6.6
MH125(F)	121.1	114	37 (3773)	25	5500	35	0.02	8.4
MH150(F)	176	160	60 (6118)	30	4000	40	0.047	10.4

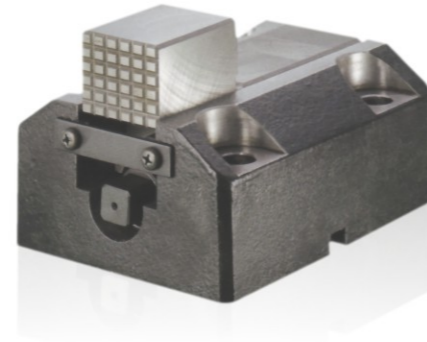
保留技術更改的權利, 恕不另行通知 Subject to technology changes without prior information
非標準需求可訂做 Non-standard requirements can be made

> HB4 SERIES

強力置爪

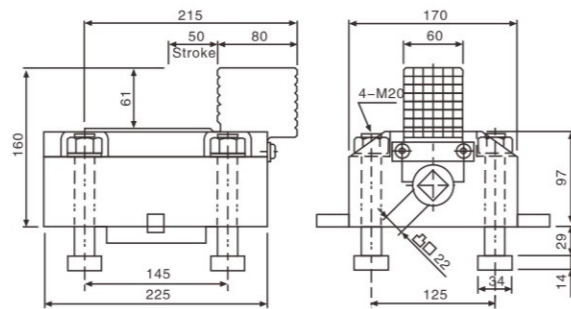
BORING MILL JAWS

- 1. 適用於巨型車床、立式車床、模治具與工作物得夾持。
- 2. 四個一組附T型螺栓。
- Clamping of workpiece for larger size lathe, vertical lathe, die set with jig.
- One set of 4-piece with T-bolt.



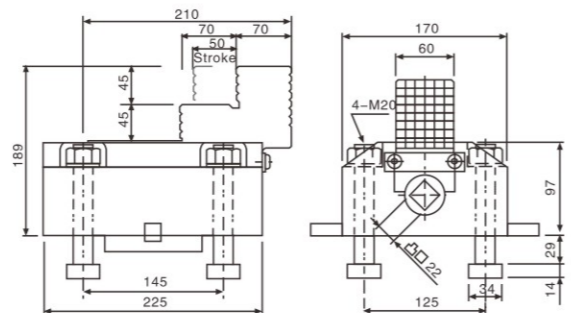
HB4-160 規格:

柱塞行程Piston stroke (mm)	50
夾持力Clamping force (KN)	39.2
重量Weight (kg)	29



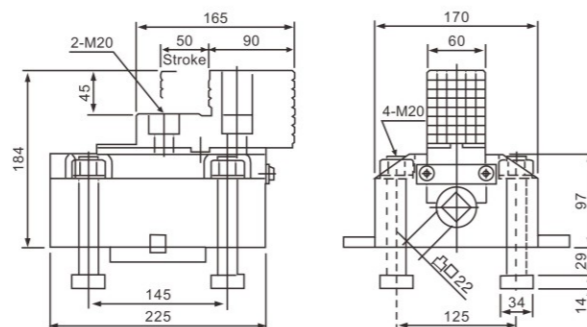
HB4-189 規格:

柱塞行程Piston stroke (mm)	50
夾持力Clamping force (KN)	39.2
重量Weight (kg)	31



HB4-2P 規格:

爪行程Jaws stroke (mm)	50
最大夾持力Max Force(kN)	39.2
重量Weight(kg)	31
適合生爪 Matched Jaws	HE2486



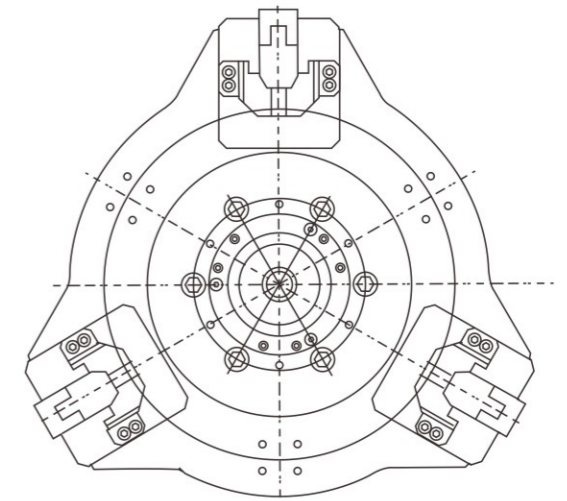
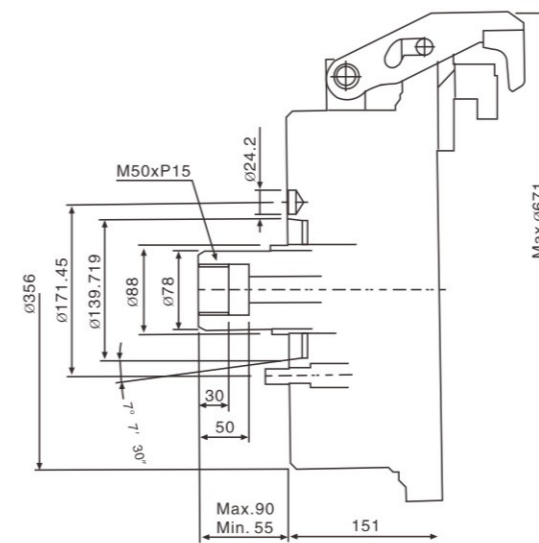
保留技術更改的權利，恕不另行通知 Subject to technology changes without prior information
非標需求可訂做 Non-standard requirements can be made

> F52 SERIES

鋁輪圈夾頭

HIGH SPEED AND LIGH WEIGHT TYPE STRONG FINGER CHUCK FOR ALUMINUM WHEELS

- 1. F52型鋁輪圈夾頭採用高級合金鋼材質，所有滑動面經表面硬化及研磨處理，以提高回轉度及耐久性。
- 2. 配合件直接安裝并符合DIN,BS,ISO,ASA,B5-9, A型之主軸標準
- All sliding surfaces are hardened and ground for accurate actual running and long service repeatability.
- Mounting : Adaptor mounting to fit with DIN, ISO, BS, ASA, B5-9 type A spindles.



型式 Model	適合鋼圈尺寸 Suitable wheel size	夾頭外徑 (mm) Out Dia. Of Chuck	適合主軸鼻端 Spindle nose	夾持力 (kgf) Clamping force	最高回轉速 Max R.P.M	重量 (不包含治具)(kgf) Weight (without Jigs)	適合油壓缸 Matched cylinders
F52A8	12" -18"	521	A2-8	3300	2800(18" 2200)	98	MS200C

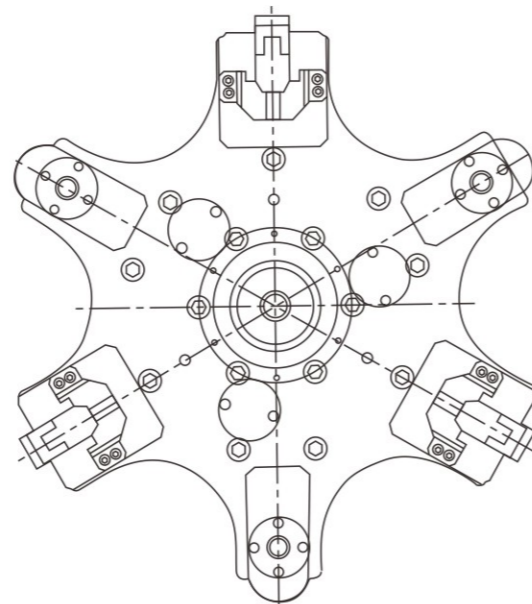
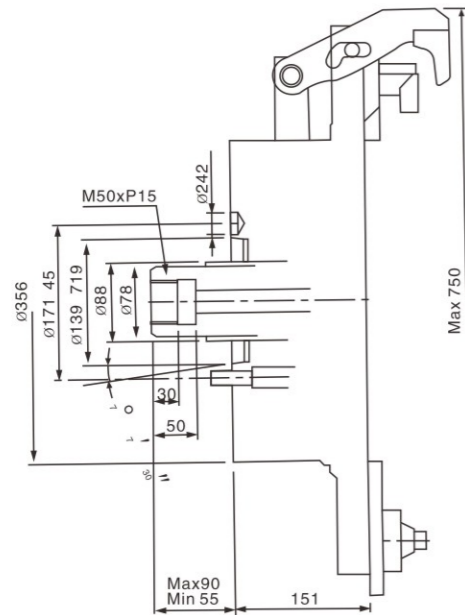
保留技術更改的權利，恕不另行通知 Subject to technology changes without prior information
非標需求可訂做 Non-standard requirements can be made

> F61 SERIES

鋁輪圈夾頭

HIGH SPEED AND LIGH WEIGHT
TYPE STRONG FINGER CHUCK FOR
ALUMINUM WHEELS

- 1.F61型鋁輪圈夾頭採用高級合金鋼材質，所有滑動面經表面硬化及研磨處理，以提高回轉度及耐久性。
- 2.配合件直接安裝并符合DIN,BS,ISO,ASA,B5-9，A型之主軸標準
- All sliding surfaces are hardened and ground for accurate actual running and long service repeatability.
- Mounting : Adaptor mounting to fit with DIN, ISO, BS, ASA, B5-9 type A spindles.



型式 Model	適合鋼圈尺寸 Suitable wheel size	夾頭外徑 (mm) Out Dia. Of Chuck	適合主軸鼻端 Spindle nose	夾持力(kgf) Clamping force	最高回轉速 max r.p.m	重量 (不包含治具) Weight (without Jigs) (kg)	適合油壓缸 Matched cylinders
F61A8	13" -22"	610	A2-8	3300	1500	145	MS200C

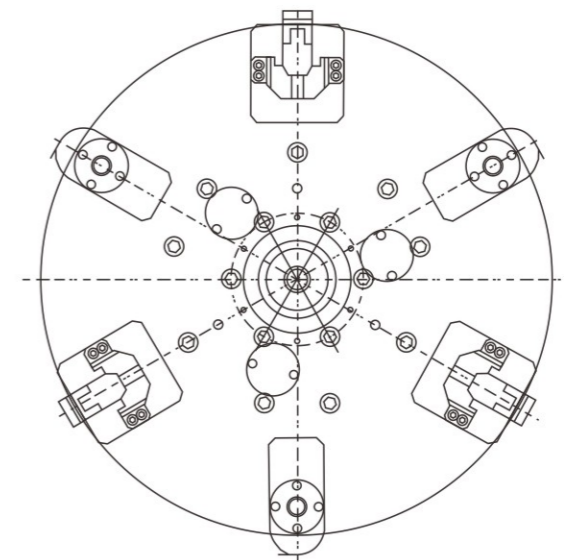
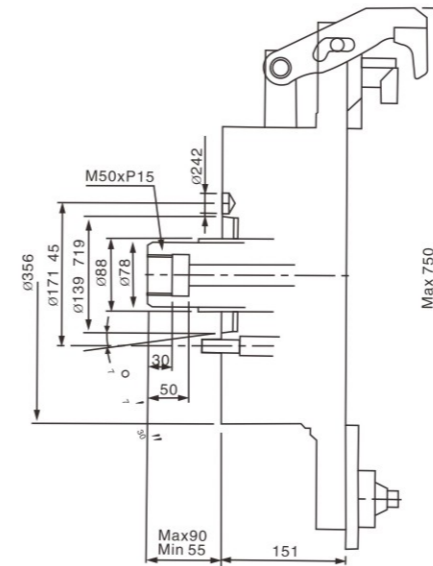
保留技術更改的權利，恕不另行通知 Subject to technology changes without prior information
非標需求可訂做 Non-standard requirements can be made

> F66 SERIES

鋁輪圈夾頭

HIGH SPEED AND LIGH WEIGHT
TYPE STRONG FINGER CHUCK FOR
ALUMINUM WHEELS

- 1.F66型鋁輪圈夾頭採用高級合金鋼材質，所有滑動面經表面硬化及研磨處理，以提高回轉度及耐久性。
- 2.配合件直接安裝并符合DIN,BS,ISO,ASA,B5-9，A型之主軸標準。
- All sliding surfaces are hardened and ground for accurate actual running and long service repeatability.
- Mounting : Adaptor mounting to fit with DIN, ISO, BS, ASA, B5-9 type A spindles.



型式 Model	適合鋼圈尺寸 Suitable wheel size	夾頭外徑 (mm) Out Dia. Of Chuck	適合主軸鼻端 Spindle nose	夾持力(kgf) Clamping force	最高回轉速 max r.p.m	重量 (不包含治具) Weight (without Jigs) (kg)	適合油壓缸 Matched cylinders
F66A8	19" -24"	660	A2-8	3300	1500	182	MS200C

保留技術更改的權利，恕不另行通知 Subject to technology changes without prior information
非標需求可訂做 Non-standard requirements can be made

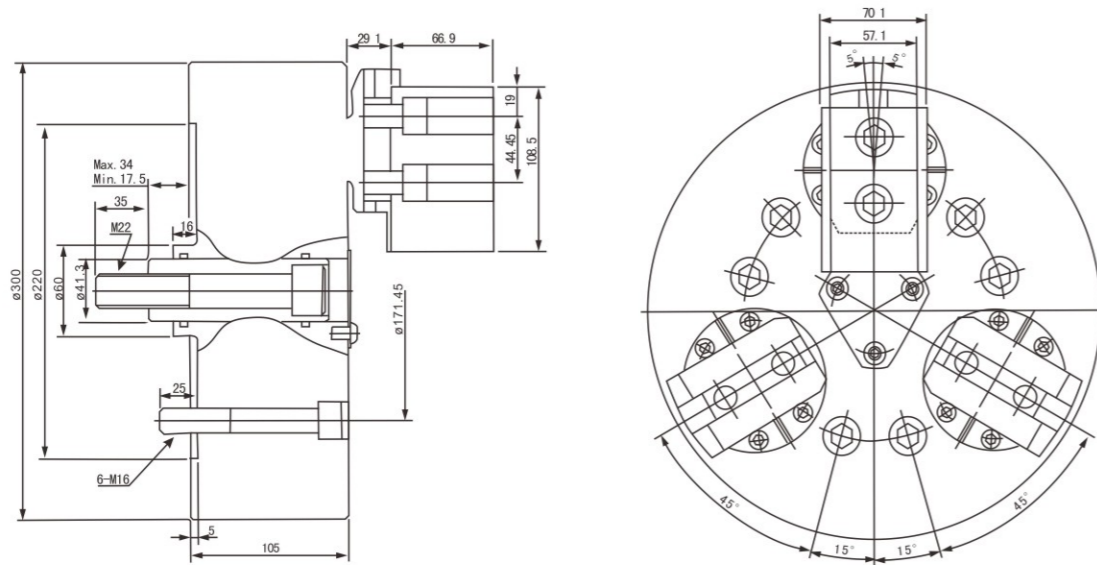
> BL SERIES

三爪搖擺式夾頭

3-JAW BALL SWING LOCK CHUCK



- 1.可引入加工物并夾持.爪齒為夾持 拉近兩段動作,故可將加工物確實吸附于夾頭前面的定位器上,維持安定夾持狀態.
 - 2.可做外徑夾持與內徑夾持,經由簡單操作可靈活切換外徑夾持內徑夾持.
 - 3.可夾持推拔部品.本產品可確實夾持具有模斜度的鑄鍛制品的黑色表皮面,故加工物夾持部分可省略取捨加工的手續.(最大可夾持到20°推拔)
 - 4.爪齒可做搖晃運動.爪齒可依照部位做搖晃運動,故能穩定夾持.(單側最大可以到5°)
 - 5.具有優異的防路性.本品與既有一般夾頭不同,在結構上具有防路性.特別是在鎖定臂(lock arm) 部分設有防路套, 可防止鐵削侵入.
- The chuck can attract the workpiece and hold it on.
 - The jaw operates in two stages :Clamping pull back, so it can hold the workpiece exactly on the position in front of the chuck, and make it under the stable situation.
 - The chuck can grasp the workpiece on both O.D. and I.D. clamping.
 - The chuck can switch between O.D. and I.D. clamping mode by a simple operation.
 - The chuck can grasp the part of the taper. The chuck can exactly grasp the black surface of the cast irons, which has draft.
 - So the discard process can be ignored on the chucking part of the workpiece. (It can grasp up to a 20 degree taper when using a clipper.)
 - The jaw can equalize on the O.D. clamping, so it can grasp the workpiece steady. (Jaw self-equalizing to max 5°)
 - Dustproof performance is excellent. It is differ from regular general purpose chuck. It is structurally dustproof. Especially there is a dustproof seal in the part of lock arm to prevent the dust.



型式 Model	柱塞行程 Piston stroke (mm)	爪行程直徑 Jaw stroke dia (mm)	最大拉杆推力 Max DB pull KN(kgf)	最大靜夾推力 Max. Gripping Force KN(kgf)	最大使用油壓力 Max oil pressure (kgf/cm ²)	最高回轉速 Max R.P.M	重量 Weight (Kg)	慣性矩 kg·m ²	適合油壓缸 Matched cylinders
BL-12	17.5	12.4	40.7(4152)	122(12440)	2.8(28.5)	2800	65	0.18	MS150C

* 保留技術更改的權利, 恕不另行通知 Subject to technology changes without prior information
 * 非標需求可訂做 Non-standard requirements can be made

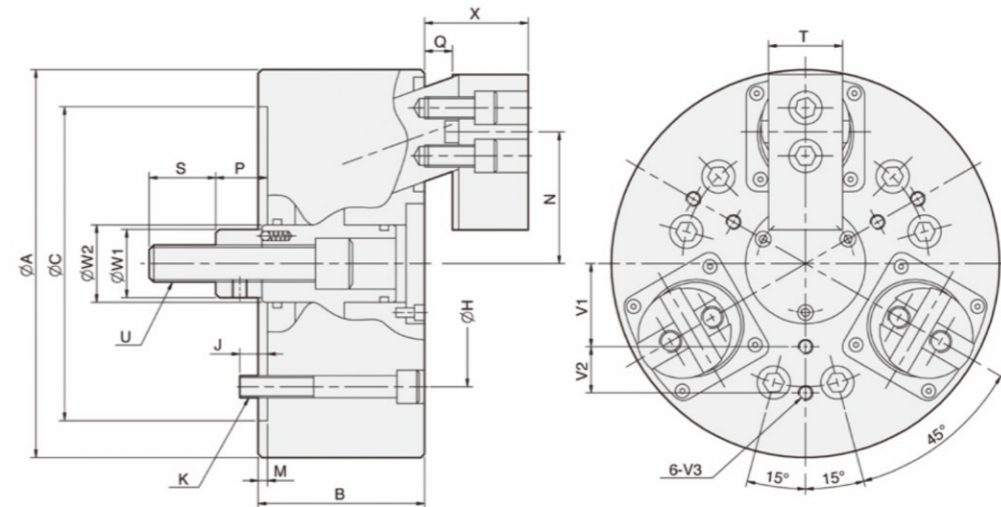
> DR SERIES

三爪後拉式夾頭

3-JAW DRAW DOWN POWER CHUCK



- 1.後拉式油壓夾頭作徑向夾持同時強力後拉, 適用於鑄件及鍛件的加工.
 - 2.後拉式夾持將工作緊貼在基準面上, 使夾持穩固, 適于重切削.
 - 3.圓柱滑動結構, 可長期適用, 并確保重複夾持的優異精度.
 - 4.準確的自定中心及強力夾持工作不上浮特性, 要求長度精準的加工最便宜.
- Draw down power chuck feature of radial clamping will lead to almost no work piece uplifting displacement; for machining casting and forging part:
 - For the clamped work-piece is appressed to the surface, chucks are suitable for heavy machining.
 - Chuck Actuators with cylindrical structure are durable and ensures high clamping repeatability.
 - Accurate self-centering and pull back features are adequate or precise length control machining requirements.



型式 Model	拉杆行程 (mm)	爪行程直徑 Jaw stroke dia (mm)	最大容許拉力 KN(kgf)	最大夾持力 Max clamping force (kgf)	最大使用油壓力 Max oil pressure (kgf/cm ²)	最高回轉速 Max R.P.M	重量 Weight (Kg)	慣性矩 kg·m ²	適合油壓缸 Matched cylinders	適合生爪 Matched HC	外徑夾持範圍 Clamping range (mm)
DR-06	10	7.2	15(1530)	25(2549)	2.1(21.4)	3500	15	0.05	MS105C	DR06-HC	Φ35-Φ165
DR-08	10	7.2	25(2590)	45(4589)	2.5(25.5)	3000	25	0.14	MS125C	DR08-HC	Φ40-Φ210
DR-10	16	11.6	35(3569)	60(6118)	3.3(34)	2500	49.2	0.4	MS125C	DR10-HC	Φ50-Φ254
DR-12	16	11.6	44(4480)	71(7240)	3.3(34)	2000	79.7	0.6	MS150C	DR12-HC	Φ50-Φ304

型式 Model	A	B	C	H	J	K	M	N Max	N Min	P Max	P Min	Q Max	Q Min	S	T	U	W1	W2	X Max	X Min	V1	V2	V3
DR-06	165	85	140	104.78	16	6*M10	5	58	54.4	33	23	14	4	36	35	M16*20	32	33.5	45	35	35	20	M6*12
DR-08	210	90	170	133.35	15	6*M12	5	71.3	67.7	38	28	15	5	36	40	M20*25	37	42	56	46	45	25	M8*16
DR-10	254	110	220	171.4	24	6*M16	5	87.8	82	48	32	22	6	46	50	M24*3	50	55	68	52	55	30	M8*16
DR-12	304	125	220	171.4	20	6*M16	5	102.8	97	47	31	21.5	5.5	50	60	M27*3	52	57	72.5	56.5	65	35	M8*16

* 保留技術更改的權利, 恕不另行通知 Subject to technology changes without prior information
 * 非標需求可訂做 Non-standard requirements can be made

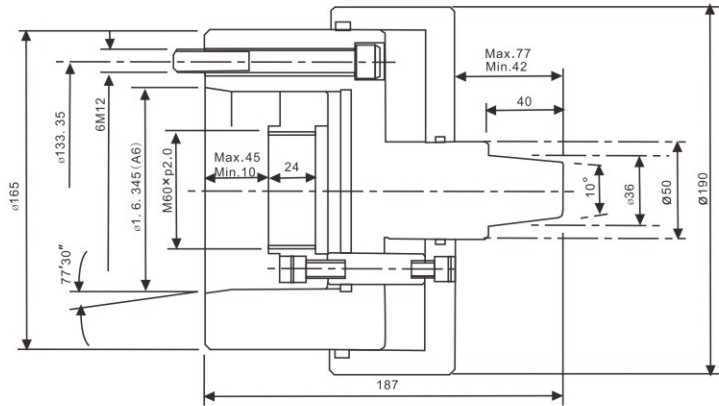
> P165 SERIES

浮動頂針夾頭

- ◎ 1.適用於薄管端面及外徑一次的加工。
- ◎ Suitable for easy one step cutting of thin hoses, plate and outside diameter.



FLOATING PLATE CENTER CHUCK



型式 Model	浮動盤行程 (mm)	最大使用油壓力 Max oil pressure (kgf/cm ²)	最高回轉速 Max R.P.M	重量 Weight (kg)	慣性矩 kg·m ²	適合油壓缸 Matched cylinders
P165	35	1.0 (10)	6000	18.5	0.02	MF125C

* 保留技術更改的權利，恕不另行通知 Subject to technology changes without prior information
 * 非標需求可訂做 Non-standard requirements can be made

> HN SERIES

三爪超高速中空油壓夾頭 (含連接板)

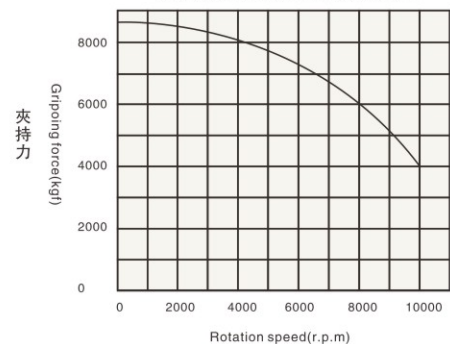


- ◎ 1.最高回轉速可達10,000r.p.m。
- ◎ 2.HN型夾頭依系ASA B5.9 A型主軸標準而設計。
- ◎ 3.HN型夾頭採用高速合金鋼材質，所有滑動面均經表面硬化及研磨處理，以提高回轉精度及耐久性。

3-JAW EXTRA HIGH SPEED THROUGH-HOLE POWER CHUCK (ADAPTER INCLUDED)

- ◎ Possible 10,000 r.p.m. highest speed chuck.
- ◎ Model HN chucks are assembled with adaptor for ASA B5.9 type A spindles.
- ◎ Model HN chucks are manufactured form high grade alloy steel.
- ◎ All sliding surfaces are hardened and ground for accurate actual running and long service repeatability.

夾持力與回轉速特性原圖
GRIPPING CHARACTERISTIC GRAPH



型式 Model	通孔直徑 Through hole dia (mm)	柱塞行程 Piston stroke (mm)	爪行程直徑 Jaw stroke dia (mm)	最大拉杆推力 Max DB pull KN(kgf)	最大夾推力 KN(kgf)	最大使用油壓力 Max oil pressure (kgf/cm ²)	最高回轉速 Max R.P.M	重量 Weight (kg)	慣性矩 kg·m ²	適合油壓缸 Matched cylinders	適合生爪 Matched HC	外徑夾持範圍 Clamping range (mm)
HN-06	φ36	12	5.5	30(3050)	79.4(8100)	2.9(30)	10000	11.5	0.035	HG-1336	Model-A	φ14-φ51

* 保留技術更改的權利，恕不另行通知 Subject to technology changes without prior information
 * 非標需求可訂做 Non-standard requirements can be made